



46<sup>th</sup> *Symens Brothers*  
**MUSCLE UP**  
*for Profit Sale*

**FEBRUARY 26, 2026 • 1 PM**  
At The Farm • Amherst, SD

**Selling 87 Bulls & 20 Females**



Welcome to our 46th annual production sale! We appreciate your continued interest in our program, and feel the cattle we're raising just keep getting better. And what a time in the history of raising cattle to be raising the best!

There have been many changes in the cattle business to enhance production, to remove some of the challenges in predictability. We've tried to keep the toolbox full through taking precise weights and measures, ultrasound data, and DNA testing that provides enhanced EPDs. That also includes new indexes that are explained on page 2 in this catalog. You, the producer, can decide which tool(s) works best for your operation.

We are confident enough in these bulls that we reserve the right to retain semen for in-herd use on any bulls sold, at our own cost. Should you wish to make semen available on the open market, let us know, and we'd be happy to work with you on a plan to make that happen. Customer service is a top priority for us, so every animal carries a one year breeding guarantee. We'll also work to deliver the cattle to you as reasonable as possible. We'll keep and feed the bulls until the breeding soundness exams are complete, and start working out delivery. That being said, buyers may take delivery of the bulls, open heifers, and especially the bred heifers as soon as possible. We'll return \$50 to you if you take your animal home sale day.

The bulls and heifers offered here have been developed to the best of our ability and with what the environment can offer. We offer creep feed to the calves for the last 50 days before weaning. Yearling bulls and heifers have been developed on a growing ration in line with getting them ready to breed, without over-conditioning them. The bred heifers ran in dry lots this summer, due to the loss of pasture acres, until late fall, when they graze corn stalks and cover crop until deep snow or the grazing becomes diminished. Ground hay and silage, with a well balanced mineral program take the place of grazing during frigid South Dakota winter months. Rest assured, all of this is done in coordination with our nutritionist, with the health of the cattle and the stage of production in mind.

Thanks again for your interest in Symens Brothers Limousin, and our decades and generations of production. Your calls, messages, and visits are always welcome.

THANK YOU.  
Symens Bros.

Limousin Friends,

It is our sincere pleasure to be working side by side with the Symens family to present their 46th Annual Muscle Up For Profit Production Sale offering.

You have come to expect excellence from the Symens program and your interest in their genetics is certainly appreciated. Bulls and females carrying the SYES prefix can be found working from South Dakota to both coasts and borders. It is truly impressive when you consider their 55-year involvement in the breed and the fact their genetics positively influence both purebred and commercial herds across the country.

Take comfort in the fact the Symens operation keeps a keen eye on how their genetics perform from birth all the way to the rail. In an effort to better predict how their genetics will perform, notice that animals in the sale have been genomically-tested. The end result of this meticulous attention to each and every detail are bulls and females proven to work in a variety of herds.

It should come as no surprise that customer service remains a top priority, and that each and every customer is important to the success of their program. Many of you reading this catalog are previous customers—a return customer is the ultimate compliment. These repeat customers are a true testament to both the genetics offered as well as the people who stand behind them.

We hope you will be able to attend the sale in person to take part in the hospitality the Symens program is known for. Thank you again for your interest in this offering. Please do not hesitate to contact us. We are here to assist you in any way possible.

Regards,

Kiley McKinna  
Wiley Fanta

Marketing Management



**Symens**  
**SYES** **Brothers**  
Your Guarantee of Predictable Genetics

11431 415th Ave. • Amherst, South Dakota 57421  
John: 605/880-8061 • [jssymens@venturecomm.net](mailto:jssymens@venturecomm.net)  
Warren: 605/237-2127 • [symens@venturecomm.net](mailto:symens@venturecomm.net)  
Check Symens Bros Limousin on  for current information.

**SUPPLEMENT INFORMATION**

Yearling Weights, Scrotal Measurements and Ultrasound data will be available sale day and online at [www.dvauction.com](http://www.dvauction.com)

**PURCHASER OBLIGATION**

All animals are at risk of the purchaser once sale is made. Border fees out of the U.S. are the responsibility of buyer.

**VIEWING CATALOG AND VIDEOS**

Catalog and videos of bulls can be viewed online at [www.mcmarketingmanagement.com](http://www.mcmarketingmanagement.com) or [www.dvauction.com](http://www.dvauction.com). Buyers are encouraged to view the cattle any time prior to sale date in case of inclement weather sale day.

All cattle sell under the standard terms and conditions of the North American Limousin Foundation.

**MORTALITY INSURANCE**

Insurance available sale day. Inquire at clerks desk.

**ABERDEEN HOTELS**

- Holiday Inn Express .....605/725-4000
- Hampton Inn..... 605/262-2600
- Ramkota Hotel.....605/229-4040
- Americinn.....605/225-4565

**BRITTON HOTELS**

- Northern Lights Inn ..... 605/448-2438
- Sunset Inn ..... 605/448-2205

**COMMERCIAL AIRLINES**

- Aberdeen, SD • 45 miles away
- Fargo, ND • 125 miles away
- Sioux Falls, SD • 200 Miles Away



**GENOMICALLY-ENHANCED EPDS**

Animals in the sale have been genomically tested. These EPDs are re-evaluated more often than before so they will change more often. GE-EPDs provide more precise EPDs based on a combination of pedigree, phenotype and DNA. One major benefit is risk reduction through increased accuracies on many traits—the equivalent to having 8-20 progeny. This saves time when assessing young breeding stock and delivers commercial customers more confidence when buying seedstock. Also, if you look under the EPD block of information, there is a % rank category with numbers showing where each animal ranks within the population. This will help you select bulls high in the traits important to you. EPDs dated 1/26/26

# 46<sup>th</sup> Symens Brothers MUSCLE UP for Profit Sale

**FEBRUARY 26, 2026 • 1 PM**

**At The Farm**

11431 415th Ave. Amherst, South Dakota 57421

## SELLING 107 HEAD

- 87 Yearling Bulls
- 10 Bred Heifers
- 10 Open Heifers

Purebreds  
All Polled • Red & Black

**SALE DAY PHONES**

- John Symens .....605/880-8061
- Warren Symens..... 605/237-2127

**SALE MANAGEMENT**



- Kiley McKinna ..... 402/350-3447
- Wiley Fanta ..... 320/287-0751
- [mcmarketingsales@aol.com](mailto:mcmarketingsales@aol.com)
- [www.mcmarketingmanagement.com](http://www.mcmarketingmanagement.com)

**AUCTIONEER**

- Chisum Peterson ..... 605/730-4214

**WATCH & BID ONLINE**



# NALF RELEASES NEW INDEXES

What are these new indexes and how you should evaluate cattle accordingly?

## TERMINAL PROFIT INDEX (\$TPI)

The new Terminal Profit Index (\$TPI) has been constructed to identify sires that produce the highest profit potential for fed cattle utilizing traits that directly impact feeding performance and superior carcass traits. The new index was created using the most recent 10 years of USDA reported fed cattle and grid pricing data, K-State reported feedlot cattle performance and NALF data. The new TPI index models the use of Limousin sires on Angus based cows with all calves marketed on a value-based carcass grid. The units reported represent expected differences in profit per mating. The following EPD traits are included in TPI and their corresponding Marginal Economic values used in the Terminal Profit Index. HCW, REA, FAT, MS, DMI, CE and PWG spread. It is important to remember that the TPI index is not an index for selecting replacement heifers or female selection. This index is for identifying Terminal Sires that excel in feeding performance in today's formula and grid-based marketing of today's fed cattle environment. The range seen on NALF's 4500 active sires reflects a high of \$210 and a low of -\$16 with a mean of \$94.

## DRY MATTER INTAKE (DMI)

Dry matter intake is a key component to \$G along with an animal's PWG potential to reflect an animal's feed conversion capability. The key to DMI is to remember a lower percentile rank is not necessarily a bad thing. Cattle that are giving you back adequate gain for their intake are still producing pounds efficiently. The real use of DMI is to get to the correct expression of feed conversion rates. \$G is used to find cattle that are superior for Feed Efficiency. You will find cattle that range in the 50th to 90th percentile for DMI but rank exceptionally well on their new (\$ Gain EPD) if they are converting their intake.

## \$GAIN INDEX (\$G)

\$G is used to find cattle that are superior for Feed Efficiency. \$G for feed conversion represents the marginal value of gain over feed cost. The higher the \$G sub-index EPD, the better or reflective of superior conversion of feed to pounds gained. The \$G sub-index measures cost of feed and an animal's individual intake versus the value of a fed steer on a 5-year average adjusted by an individual animal's gain. When evaluating a sire for \$G, the EPD range for all Limousin active sires reflects a high of .25, an average of .10 and a low of -0.03.

## MATERNAL PROFIT INDEX (\$MPI)

In this production scenario, Limousin bulls are mated to Angus-based cows with replacement heifers retained from the calf crop and surplus calves marketed at weaning. EPDs weighted in this index are CED, CEM, WW, MK, MW, DMI, and STAY. Mature weight is the primary driver and represents the significant cost of maintenance energy requirement in the cow-calf sector. Weaning Weight and Milk (expressed in pounds of calf weaning weight) represent the principal revenue stream. Stayability helps account for differences in replacement costs in the system and the effect of heifer retention on revenue streams. This index should be used by commercial cattlemen whose production scenario includes marketing calves at weaning and retaining replacements from the herd.

## INDUSTRY PROFIT INDEX (\$IPI)

The production scenario for \$IPI includes mating Limousin sires to Angus-based cows with retention of replacements from the herd and all other calves fed out and marketed on a value-based grid that rewards quality and yield. \$IPI balances both maternal and terminal selection criteria by combining replacement female retention from the herd with carcass endpoint for marketed surplus heifers and all steers. Due to the challenges faced by commercial cattlemen in this production scenario, \$IPI incorporates the largest and most diverse set of EPDs, including carcass traits as the primary revenue drivers, along with cow Mature Weight, Stayability and Dry Matter Intake as cost drivers.

This full suite of indexes gives users of registered Limousin genetics one of the most progressive index suites in the industry. They are updated annually with current market price data for feeder cattle prices, fed cattle prices and carcass prices. All price data uses the most recent 10-year average for price data updates and incorporate marginal economic values that are relevant to each index produced.

For detailed information regarding these new indexes as well as the entire line-up of NALF EPDs, visit [www.nalf.org](http://www.nalf.org)



# A GUIDE TO THE TRAITS YOU ARE LOOKING FOR:



## Bulls Suitable For Heifers

2	31	45	59	71	79
3	33	46	61	72	80
5	40	51	63	76	85
21	42	55	65	77	86
27	43	58	68	78	87

## Homo Polled & Homo Black Bulls

26	39	44	57
29	40	51	63



## YEARLING BULLS

### Lots 1-87

For 55 years we have taken our role as professional seedstock producers very seriously. Our goal has always been to supply genetics capable of helping our customers succeed. As you study this set of bulls, know that every effort has been made to manage, measure, evaluate and represent these bulls in a manner consistent with our philosophy to insure 100% customer satisfaction.

The bulls were weaned in October and put on a grower ration of alfalfa hay, barley hay, corn, corn silage and distillers grains to project a 3.5 lb per day gain. After taking yearling weights they will be backed off to prepare them for breeding in the pasture this summer. They were poured for lice in December and again if needed. We will have a supplement sheet prior to the sale with adjusted ultrasound carcass data, adjusted yearling weights and scrotal measurements. We are confident all bulls should calve virtually unassisted on mature cows.

- We will keep and feed bulls until they are semen tested, at which time we'll begin arranging for delivery.
- Free delivery to 400 miles.
- Anyone taking a bull(s) home sale day will receive a \$50 per head credit.
- First breeding season guarantee.

52

# YEARLING BULLS



LOT 1

## SYES NEW DEAL 96N ET

BULL • PUREBRED(100/87.7) • HOMO POLLED (P-2) • RED  
03/27/2025 • NPM3634219 • SYES 96N

WULFS HORTON 7358H  
**WULFS KACTUS 4841K**  
WULFS BESAME MUCHO 4841B

CHTT WORK TIME 4925W  
**MISS SYES WORKTIME 66B**  
MISS SYES 261S 166U

HUNT CREDENTIALS 37C ET  
WULFS ENCARNASION 7358E  
WULFS XTRACTOR X233X  
WULFS YET IT'S TRUE 1401Y

HC MONTANA JUSTICE 694  
CHTT3625S  
MR SYES LINEBACKER 261S  
MISS SYES NIGHT OWL 165S

ACT BW  
98

ADJ WW  
750

AGE-EPDs

	CE	BW	WW	YW	MK	TM	CM	SC	DC	YG	CW	RE	MB	DMI	\$TPI	\$G	\$MPI	\$IPI
EPDs	6	4.1	80	123	31	71	1	.9	16	-4	30	.95	-.19	.52	84	.08	76	33
%	90	95	15	15	10	4	>95	15	10	60	60	65	70	90	90	65	80	>95

SYES New Deal 96N is a powerful, square-made purebred that leads off this offering with the kind of muscle, mass and presence Symens cattle are known for. This homozygous polled, red son of Wulfs Kactus 4841K is wide topped, big hipped and deep through his center body, tying it all together with a sound structure and a herd bull look that stands out in the pen. He combines real-world performance with a balanced EPD profile, ranking in the top 15% for both weaning and yearling weight while maintaining usable calving ease. If you're looking to add genuine muscle, structural integrity and production-oriented performance, New Deal is built to go to work and add value from day one.



SYES HARDROCK 65H • MATERNAL SIB TO LOTS 1, 2, 3, 6 & 7

Miss SYES Worktime 66B is the dam of Lots 1, 2, 3, 6 & 7. She is also the dam of SYES Hardrock 65H. She consistently produces some of our top genetics and the Hardrock calves are making waves in the United States and Canada.

# YEARLING BULLS



LOT 2



LOT 3

2

## SYES NEWTON 902N ET

BULL • PUREBRED(100/87.8) • HOMO POLLED (P-2) • BLACK  
02/21/2025 • NPM3522015 • SYES 902N

RUNL RIALTO 135R  
**RUNL JUSTIFIED 364 J**  
RUNL EVENING GLOW 205 E

CHTT WORK TIME 4925W  
**MISS SYES WORKTIME 66B**  
MISS SYES 261S 166U

JCL LODESTAR 27L  
RUNL 782N  
AHCC BADLANDS 908B  
RUNL BLYSSE 106 B

HC MONTANA JUSTICE 694  
CHTT3625S  
MR SYES LINEBACKER 261S  
MISS SYES NIGHT OWL 165S

ACT BW 78  
ADJ WW 683  
#GE-EPDs

	CE	BW	WW	YW	MK	TM	CM	SC	DC	YG	CW	RE	MB	DMI	\$TPI	\$G	\$MPI	\$PI
EPDS	15	.3	74	115	29	66	7	.45	14	-.36	42	.92	.08	.57	131	.06	98	128
%	15	35	25	25	20	15	35	70	45	70	25	70	10	95	20	90	30	25

SYES Newton 902N is a calving-ease focused, production-minded purebred that still brings plenty of muscle and look to the table. This homozygous polled, black son of RUNL Justified 364J is smooth made, long bodied and sound on his feet and legs, offering the kind of structural integrity and balance cattlemen appreciate. He ranks in the top 15% for calving ease with a low birth weight EPD, while still posting solid growth figures that land him in the top 25% for both weaning and yearling weight. If you're searching for a heifer-safe option that doesn't sacrifice shape, performance or maternal strength, Newton fits the bill and is built to work in a wide range of programs.

3

## SYES NEWS WORTHY 915N ET

BULL • PUREBRED(100/87.8) • HOMO POLLED (P-2) • BLACK  
02/25/2025 • NPM3522018 • SYES 915N

RUNL RIALTO 135R  
**RUNL JUSTIFIED 364 J**  
RUNL EVENING GLOW 205 E

CHTT WORK TIME 4925W  
**MISS SYES WORKTIME 66B**  
MISS SYES 261S 166U

JCL LODESTAR 27L  
RUNL 782N  
AHCC BADLANDS 908B  
RUNL BLYSSE 106 B

HC MONTANA JUSTICE 694  
CHTT3625S  
MR SYES LINEBACKER 261S  
MISS SYES NIGHT OWL 165S

ACT BW 78  
ADJ WW 738  
#GE-EPDs

	CE	BW	WW	YW	MK	TM	CM	SC	DC	YG	CW	RE	MB	DMI	\$TPI	\$G	\$MPI	\$PI
EPDS	12	1.9	86	132	29	71	6	.45	16	-.4	39	1.04	-.08	.79	110	.07	103	88
%	35	65	4	5	20	4	55	70	10	60	35	50	40	>95	55	80	20	65

SYES News Worthy 915N is a heifer-safe purebred that blends calving ease, performance and added muscle in a rugged, good-looking package. This homozygous polled, black son of RUNL Justified 364J is long bodied, square made and sound on the move, with the kind of balance and eye appeal that works in real-world production settings. He posts a favorable calving-ease profile while still delivering growth, ranking in the top 5% for yearling weight and top 10% for weaning weight. If you're after a sleep-easy option that can still add pounds, muscle and consistency to a calf crop, News Worthy is built to do exactly that.

# YEARLING BULLS



LOT 4

4

## SYES NATIONAL TREASURE 195N

BULL • PUREBRED(93/83.5) • HOMO POLLED (P-2) • BLACK  
03/26/2025 • NPM3442107 • SYES 195N

SYES EASY GOING 77E  
**SYES KNOCKOUT 23K**  
MISS SYES BACKSTAGE 32H

WULFS DEVILS LAKE K118D ET  
**MISS SYES DEVILS LAKE 695G**  
WASY COWDOG 694C

COLE BUSINESSMAN 104B  
MISS SYES RANSOM 76X  
LFLC CHECKING ACCOUNT 701C  
MISS SYES CANYON 31F

WULFS BILLY THE KID K234B  
WULFS YOUR CHOICE 1419Y  
LFLC ARBY 5027A  
SY UPSCALE 933U

ACT BW  
98  
ADJ WW  
733

	CE	BW	WW	YW	MK	TM	CM	SC	DC	YG	CW	RE	MB	DMI	\$TPI	\$G	\$MPI	\$IPI
EPDS	4	5.5	87	131	22	66	2	.86	18	-.43	42	1.23	-.14	.27	114	.13	85	77
%	95	>95	3	5	85	15	>95	20	3	45	25	15	55	80	50	15	55	75

SYES National Treasure 195N is a stout, performance-oriented bull that brings added power, muscle and growth to the forefront. This homozygous polled, black son of SYES Knockout 23K is wide topped, big hiped and dense through his center body, offering the kind of rugged build and sound structure that holds up in real-world production. He pairs that extra mass with impressive growth credentials, ranking in the top 5% for yearling weight and top 10% for weaning weight, while also delivering added carcass value.



LOT 5

5

## SYES NEW WAVE 156N

BULL • PUREBRED(100/88.9) • HOMO POLLED (T) • RED  
04/13/2025 • NPM3442099 • SYES 156N

TREF EZ STREET 107E  
**TREF LONE RANGER 577L**  
TREF GEMMA 577G

SYES EASY GOING 77E  
**MISS SYES EASY GOING 56H**  
MISS SYES YUNT TO 56B

WULFS CAPER 3303C  
TREF COCOA BEAN 107C  
COLE DAZZLE 74D  
TREF CASSIE 177C

COLE BUSINESSMAN 104B  
MISS SYES RANSOM 76X  
ROMN YUNT TO 109Y  
MISS SYES DUKE 55T

ACT BW  
84  
ADJ WW  
752

	CE	BW	WW	YW	MK	TM	CM	SC	DC	YG	CW	RE	MB	DMI	\$TPI	\$G	\$MPI	\$IPI
EPDS	14	1.7	72	107	27	63	8	.62	15	-.45	35	1.17	-.24	.08	113	.1	97	95
%	20	60	35	40	30	30	20	40	20	40	45	25	80	65	50	40	30	55

SYES New Wave 156N is a heifer-safe purebred that offers an attractive blend of calving ease, balance and extra shape. This homozygous polled, red son of TREF Lone Ranger 577L is smooth shouldered, long bodied and sound on the move, with a square hip and enough muscle to remain production relevant. He brings added confidence to the calving pasture with a top 20% ranking for calving ease and a manageable birth weight profile, while still posting solid growth that ranks him in the top 40% for yearling weight.



RUNL JUSTIFIED 364 J • SIRE OF LOT 6

6

## SYES NEWS BREAK 913N ET

BULL • PUREBRED(100/87.8) • HOMO POLLED (P-2) • BLACK  
02/26/2025 • NPM3522016 • SYES 913N

RUNL RIALTO 135R  
**RUNL JUSTIFIED 364 J**  
RUNL EVENING GLOW 205 E

CHTT WORK TIME 4925W  
**MISS SYES WORKTIME 66B**  
MISS SYES 261S 166U

JCL LODESTAR 27L  
RUNL 782N  
AHCC BADLANDS 908B  
RUNL BLYSSE 106 B

HC MONTANA JUSTICE 694  
CHTT3625S  
MR SYES LINEBACKER 261S  
MISS SYES NIGHT OWL 165S

ACT BW  
85  
ADJ WW  
770

	CE	BW	WW	YW	MK	TM	CM	SC	DC	YG	CW	RE	MB	DMI	\$TPI	\$G	\$MPI	\$IPI
EPDS	14	2.4	81	129	29	69	7	.45	14	-.46	42	1.2	-.14	.63	123	.1	103	102
%	20	75	10	10	20	10	35	70	45	35	25	20	55	95	35	40	20	50

SYES News Break 913N is a powerful, performance-driven purebred that offers the calving-ease flexibility today's cattlemen demand. This homozygous polled, black son of RUNL Justified 364J is long spined, square hiped and heavy through his center body, with a sound build that allows him to move freely and hold up under real-world conditions. He combines that rugged phenotype with impressive growth credentials, ranking in the top 10% of the breed for both weaning and yearling weight, while maintaining favorable calving-ease.

# YEARLING BULLS



LOT 7



LOT 8



## SYES NEXT WAVE 65N

BULL • PUREBRED(100/88.2) • HOMO POLLED (P-2) • BLACK  
03/21/2025 • NPM3442077 • SYES 65N

SYES EASY GOING 77E  
**SYES KNOCKOUT 23K**  
MISS SYES BACKSTAGE 32H

COLE BUSINESSMAN 104B  
MISS SYES RANSOM 76X  
LFCL CHECKING ACCOUNT 701C  
MISS SYES CANYON 31F

CHTT WORK TIME 4925W  
**MISS SYES WORKTIME 66B**  
MISS SYES 261S 166U

HC MONTANA JUSTICE 694  
CHTT3625S  
MR SYES LINEBACKER 261S  
MISS SYES NIGHT OWL 165S

ACT BW  
106  
ADJ WW  
767

**%GE-EPDs**

EPDS	CE	BW	WW	YW	MK	TM	CM	SC	DC	YG	CW	RE	MB	DMI	\$TPI	\$G	\$MPI	\$IPI
	10	3	78	120	27	66	6	.7	16	-.48	27	1.16	-.27	.42	84	.09	94	50
%	55	85	20	20	30	15	55	30	10	30	70	25	85	85	90	50	35	95

SYES Next Wave 65N is a stout, power-oriented purebred built for cattlemen who value muscle, mass and performance. This homozygous polled, black son of SYES Knockout 23K is wide based, big topped and dense made, carrying extra dimension through his rib and quarter while remaining sound and flexible on the move. He pairs that rugged phenotype with solid growth credentials, ranking in the top 20% for both weaning and yearling weight and offers added carcass value as well.



## SYES NITTY GRITTY 165N

BULL • PUREBRED(100/88.6) • SCURRED • RED  
04/06/2025 • NPM3442101 • SYES 165N

WULFS DEVILS LAKE K118D ET  
**SYES HARDROCK 65H**  
MISS SYES WORKTIME 66B

WULFS BILLY THE KID K234B  
WULFS YOUR CHOICE 1419Y  
CHTT WORK TIME 4925W  
MISS SYES 261S 166U

LFCL ARBY 5027A  
**MISS SYES ARBY 164G**  
MISS SYES XCLUSIVE 162C

LFCL WINDFALL 56W  
HOEL RIGAMAROLE  
WULFS XCLUSIVE 2458X  
MISS SYES PLATINUM 168T

ACT BW  
94  
ADJ WW  
787

**%GE-EPDs**

EPDS	CE	BW	WW	YW	MK	TM	CM	SC	DC	YG	CW	RE	MB	DMI	\$TPI	\$G	\$MPI	\$IPI
	9	2.8	82	133	28	69	6	.41	9	-.53	46	1.35	-.18	.68	128	.12	89	90
%	65	80	10	5	25	10	55	70	90	15	15	10	65	>95	25	20	45	60

SYES Nitty Gritty 165N is a rugged, power-driven purebred that brings extra shape, performance and substance to the offering. This red, scurred son of SYES Hardrock 65H is wide topped, big hipped and deep bodied, carrying muscle and mass all the way through while remaining sound and functional on his feet and legs. He backs that phenotype with elite growth credentials, ranking in the top 5% for yearling weight and top 10% for weaning weight, along with added carcass merit that keeps him production relevant.

# YEARLING BULLS



LOT9

9

## SYES NUMERO UNO 675N

BULL • PUREBRED(91/79.7) • HOMO POLLED (P-3) • BLACK  
04/17/2025 • NPM3442155 • SYES 675N

TREF EZ STREET 107E  
**TREF LONE RANGER 577L**  
TREF GEMMA 577G

JBV YELLOWSTONE 901G  
**MISS SYES YELLOWSTONE 685K**  
WASY BRAVO 684B

WULFS CAPER 3303C  
TREF COCOA BEAN 107C  
COLE DAZZLE 74D  
TREF CASSIE 177C

AHCC EARNING POWER 900E ET  
JBV GIRL CRUSH 422B  
SYES USER FRIENDLY 524U  
SY ZE THRUWAY 938Z

ACT BW	88
ADJ WW	750

CE	BW	WW	YW	MK	TM	CM	SC	DC	YG	CW	RE	MB	DMI	\$TPI	\$G	\$MPI	\$IPI	
9	.5	76	115	28	66	5	1.18	17	-.45	54	1.3	-.17	.26	146	.09	78	111	
%	65	35	20	25	25	15	70	10	5	40	3	10	65	80	4	50	75	40

SYES Numero Uno 675N is a stout, eye-catching purebred that blends muscle, balance and real-world performance in a practical package. This homozygous polled, black son of TREF Lone Ranger 577L is long bodied, square hipped and dense through his center body, with a sound structure that allows him to move freely and stay functional. He offers a well-rounded numerical profile highlighted by strong growth and elite carcass merit, ranking in the top 5% for ribeye area and top 10% for marbling.



LOT 10

10

## SYES NEW BEANER 651N

BULL • PUREBRED(100/87.6) • HOMO POLLED (P-1) • RED  
03/25/2025 • NPM3442154 • SYES 651N

SYES EASY GOING 77E  
**SYES KNOCKOUT 23K**  
MISS SYES BACKSTAGE 32H

CHTT WORK TIME 4925W  
**MISS BEANER WORKTIME 650D**  
MISS BEANER XCLUSIVE 615A

COLE BUSINESSMAN 104B  
MISS SYES RANSOM 76X  
LFLC CHECKING ACCOUNT 701C  
MISS SYES CANYON 31F

HC MONTANA JUSTICE 694  
CHTT3625S  
WULFS XCLUSIVE 2458X  
MISS SYES JORDAN 512M

ACT BW	98
ADJ WW	775

CE	BW	WW	YW	MK	TM	CM	SC	DC	YG	CW	RE	MB	DMI	\$TPI	\$G	\$MPI	\$IPI	
7	4.5	75	118	27	64	4	.7	11	-.57	30	1.38	-.24	.43	95	.1	75	45	
%	80	>95	25	20	30	20	85	30	80	10	60	5	80	85	80	40	85	>95

SYES New Beaner 651N is a rugged, power-built purebred that brings added muscle, shape and performance to the table. This homozygous polled, red son of SYES Knockout 23K is wide based, big topped and dense through his rib and quarter, offering the extra substance cattlemen appreciate in a herd sire. He couples that stout phenotype with solid growth credentials, ranking in the top 20% for yearling weight and top 25% for weaning weight, while maintaining a workable calving-ease profile.



TREF LONE RANGER 577L • SIRE OF LOTS 9, 11 & 13

11

## SYES NFR 511N

BULL • PUREBRED(100/87.5) • SCURRED • RED  
03/23/2025 • NPM3459400 • SYES 511N

TREF EZ STREET 107E  
**TREF LONE RANGER 577L**  
TREF GEMMA 577G

L7 FALCON 8055F  
**MISS SYES FALCON 510H**  
MISS SYES PETE 610F

WULFS CAPER 3303C  
TREF COCOA BEAN 107C  
COLE DAZZLE 74D  
TREF CASSIE 177C

IVY'S BUBBA WATSON HTZ24B  
MISS L7 515C  
L7 3014A  
MISS BASY WORKTIME 610B

ACT BW	88
ADJ WW	784

CE	BW	WW	YW	MK	TM	CM	SC	DC	YG	CW	RE	MB	DMI	\$TPI	\$G	\$MPI	\$IPI	
9	1.9	81	115	29	70	6	.53	11	-.62	51	1.54	-.28	-.02	148	.1	92	114	
%	65	65	10	25	20	5	55	55	80	2	5	1	90	55	3	40	40	35

SYES NFR 511N brings a different kind of punch to the lineup—muscle and performance with a look that's clean, athletic and built to last. This red son of TREF Lone Ranger 577L is long spined, square through his hip and carries his muscle evenly from end to end, all while staying light on his feet and flexible in his stride. His numbers back up the phenotype with standout carcass merit, ranking near the top of the breed for marbling and ribeye and landing in the elite tier for \$TPI.

# YEARLING BULLS

12

## SYES NAILED IT 684N

BULL • PERCENTAGE(78/69.4) • HOMO POLLED (T) • BLACK  
03/25/2025 • NXM3442157 • SYES 684N

CELL ENVISION 7023E  
**L7 GENUINE VISION 9033G**  
MISS L7 567C

SYES EASY GOING 77E  
**MISS SYES EASY GOING 683H**  
SY ZE EVENING 927Z

AHCC BARN BURNER B907  
PBR5 ZSA ZSA 246Z  
L7 ALL THE ANSWERS 3056A  
MISS L7 323A  
COLE BUSINESSMAN 104B  
MISS SYES RANSOM 76X  
CHTT SECURITY 4639S  
SYHR NOW'S THE TIME 908N **AGE-EPDs**  
ACT BW 98  
ADJ WW 745

CE	BW	WW	YW	MK	TM	CM	SC	DC	YG	CW	RE	MB	DMI	\$TPI	\$G	\$MPI	\$PI	
EPDS	1	4	76	119	25	63	2	1.2	24	-.42	36	1.25	-.32	.68	78	.07	58	10
%	>95	>95	20	20	45	20	>95	10	1	15	65	5	>95	90	>95	55	>95	>95

SYES Nailed It 684N is a square-built, performance-minded high percentage bull that combines extra muscle, rib shape and real-world functionality. This homozygous polled, black son of L7 Genuine Vision 9033G is bold through his center body with a strong top and a balanced, athletic look that works in a wide range of production settings. He brings a stout performance profile to the table, ranking in the top 20% for both weaning and yearling weight, while still maintaining added carcass value.



LOT 12

13

## SYES NUGGET 601N

BULL • PUREBRED(100/87.5) • HOMO POLLED (P-2) • RED  
03/20/2025 • NPM3459402 • SYES 601N

TREF EZ STREET 107E  
**TREF LONE RANGER 577L**  
TREF GEMMA 577G

SYES XEROX 464Z  
**MS BASY 464Z 602E**  
MISS BASY WORKTIME 601Y

WULFS CAPER 3303C  
TREF COCOA BEAN 107C  
COLE DAZZLE 74D  
TREF CASSIE 177C  
DLVL XEROX 023X  
MISS SYES ROSCOE 464T  
CHTT WORK TIME 4925W  
MISS BASY LINEBACKER 603S **AGE-EPDs**  
ACT BW 86  
ADJ WW 717

CE	BW	WW	YW	MK	TM	CM	SC	DC	YG	CW	RE	MB	DMI	\$TPI	\$G	\$MPI	\$PI	
EPDS	12	-1.1	69	94	32	66	4	.62	10	-.52	20	1.08	-.15	-1	89	.05	86	63
%	35	15	45	65	5	15	85	40	85	20	85	40	60	45	85	95	55	90

SYES Nugget 601N is a practical, problem-free purebred that offers balance, usability and consistency in a moderate, easy-doing package. This homozygous polled, red son of TREF Lone Ranger 577L is clean made through his front end, sound structured and carries a smooth, functional muscle pattern that works in real-world environments. He brings a favorable calving-ease profile with a negative birth weight EPD while still maintaining respectable growth and maternal balance.



LOT 13

14

## SYES NEW STAR 530N

BULL • PUREBRED(100/90.3) • HOMO POLLED (P-2) • RED  
03/31/2025 • NPM3442142 • SYES 530N

ANCHOR B GOLD RUSH 48G  
**JBV GOLDSTONE 306L**  
JBV GIRL CRUSH 422B

GV BIG TIMER 328E  
**MISS SYES GV 530J**  
MISS SYES URBAN 930Y

B BAR AUSTIN HEALY 4D ET  
ANCHOR B BAILEY 21B  
JBV EXPEDITION 205Z  
JBV BRITTANY 029X  
WULFS BIG TIMER 2004B  
GV MS BEEFMAKER PRIDE 575C  
WULFS URBAN COWBOY 2149U  
MISS SYES DUKE 926S **AGE-EPDs**  
ACT BW 90  
ADJ WW 708

CE	BW	WW	YW	MK	TM	CM	SC	DC	YG	CW	RE	MB	DMI	\$TPI	\$G	\$MPI	\$PI	
EPDS	7	3.1	66	106	29	61	5	.6	16	-.6	37	1.41	-.28	-.11	120	.15	66	70
%	80	85	55	40	20	40	70	40	10	4	40	4	90	45	40	4	95	85

SYES New Star 530N is a dense, heavy-centered purebred that offers a different look—more body, more shape and a stout, workmanlike build that stands out in the pen. This homozygous polled, red bull is square through his hip, deep ribbed and built with the kind of base width and structural integrity that holds up under pressure. He combines that rugged phenotype with a solid, usable performance profile and added carcass value, making him a practical option for programs focused on durability and payweight.



LOT 14

# YEARLING BULLS

15

## SYES NICK 49N

BULL • PERCENTAGE(82/73.4) • HOMO POLLED (T) • BLACK  
04/04/2025 • NXM3442072 • SYES 49N

AHCC EARNING POWER 900E ET  
**LEWIS GRAVITY FLOW G62**  
MISS WULFETTE 2285Z

MAGS ANCHOR  
LVLS 9066U  
S A V PIONEER 7301  
WULFS UNEQUAL MATCH 8280U

SYES EARTHQUAKE 438E ET  
**MISS SYES EARTHQUAKE 47H**  
MISS SYES BERMUDA 547D

JYF BIG TIMBER 47B  
MISS SYES FRIENDLY 465Z  
SYES BERMUDA 559B  
MISS SYES FRIENDLY 546Z **AGE-EPDs**

ACT BW  
88  
ADJ WW  
744

CE	BW	WW	YW	MK	TM	CM	SC	DC	YG	CW	RE	MB	DMI	\$TPI	\$G	\$MPI	\$IPI
EPDS 15	.1	63	102	27	58	6	1.14	14	-.17	30	.67	.05	.7	89	.06	91	94
% 15	45	50	40	20	40	65	15	25	55	80	65	70	90	90	70	35	70

SYES Nick 49N is a balanced, easy-moving percentage bull that offers flexibility for a wide range of breeding programs. This homozygous polled, black son of Lewis Gravity Flow G62 is clean fronted, moderate framed and sound built, with a smooth muscle pattern that stays functional from shoulder to hip. He excels in calving ease, ranking in the top 15% of the breed, while still providing dependable growth and maternal balance. If you're looking for a bull that brings versatility, structural correctness and sleep-easy confidence to the pasture, Nick is a practical option that checks a lot of boxes.

16

## SYES NORTH STAR 19N

BULL • PUREBRED(100/87.1) • SCURRED • RED  
03/27/2025 • NPM3459382 • SYES 19N

TREF EZ STREET 107E  
**TREF LONE RANGER 577L**  
TREF GEMMA 577G

WULFS CAPER 3303C  
TREF COCOA BEAN 107C  
COLE DAZZLE 74D  
TREF CASSIE 177C

CHTT WORK TIME 4925W  
**MISS SYES WORKTIME 219A**  
MISS SYES NIGHT OWL 220T

HC MONTANA JUSTICE 694  
CHTT3625S  
KRVN NIGHT OWL 223N  
MISS SYES ELLIOT 221L **AGE-EPDs**

ACT BW  
84  
ADJ WW  
723

CE	BW	WW	YW	MK	TM	CM	SC	DC	YG	CW	RE	MB	DMI	\$TPI	\$G	\$MPI	\$IPI
EPDS 15	.6	74	103	30	67	6	.58	18	-.46	31	1.24	-.16	.04	109	.06	104	99
% 15	40	25	45	15	10	55	55	3	35	60	15	60	60	55	90	15	50

SYES North Star 19N is a smooth-made, well-balanced purebred that offers reliability, flexibility and a user-friendly build. This red, scurred son of TREF Lone Ranger 577L is moderate in his frame with a clean shoulder, level top and a functional muscle pattern that stays consistent from end to end. He brings added confidence to the calving pasture with a top-tier calving ease profile, while still maintaining respectable growth and maternal balance. If your program values cattle that are easy to manage, adaptable and built to stay productive over the long haul, North Star points you in the right direction.

17

## SYES NEW IDEA 311N

BULL • PUREBRED(100/90.7) • HOMO POLLED (P-2) • RED  
04/10/2025 • NPM3442123 • SYES 311N

ANCHOR B GOLD RUSH 48G  
**JBV GOLDSTONE 306L**  
JBV GIRL CRUSH 422B

B BAR AUSTIN HEALY 4D ET  
ANCHOR B BAILEY 21B  
JBV EXPEDITION 205Z  
JBV BRITTANY 029X

JYF EXTRA CHUNK 518E  
**MISS SYES EX CHUNK 311J**  
MISS SYES XCLUSIVE 316C

JYF CHUNK 35C  
TMF MISS 118W  
WULFS XCLUSIVE 2458X  
MISS SYES LINEBACKER 317S **AGE-EPDs**

ACT BW  
84  
ADJ WW  
708

CE	BW	WW	YW	MK	TM	CM	SC	DC	YG	CW	RE	MB	DMI	\$TPI	\$G	\$MPI	\$IPI
EPDS 13	.6	66	94	27	60	6	.75	9	-.54	21	1.2	-.21	-.27	95	.08	89	76
% 30	40	55	65	30	45	55	30	90	15	85	20	75	30	75	65	45	80

SYES New Idea 311N is a moderate, easy-handling purebred that offers balance, consistency and a practical kind of usefulness that fits commercial-minded programs. This homozygous polled, red son of JBV Goldstone 306L is clean patterned with a level top, adequate muscle and a sound, athletic build that stays functional in the pasture. He brings a dependable calving-ease profile with a sensible spread of growth and maternal traits, making him a flexible option across a variety of cow types.

18

## SYES NICE AND EASY 636N

BULL • PUREBRED(100/89.1) • SCURRED • HET BLACK (T)  
03/21/2025 • NPM3442153 • SYES 636N

COLE BUSINESSMAN 104B  
**SYES EASY GOING 77E**  
MISS SYES RANSOM 76X

RICHMOND YOGI SRD 7Y  
COLE MISS PUREPOWER 809U  
WULFS RANSOM 3059R  
MISS SYES JUSTICE 476U

JYF EXTRA CHUNK 518E  
**MISS SYES EX CHUNK 635H**  
MISS WASY EDNA 636E

JYF CHUNK 35C  
TMF MISS 118W  
GATS XERXES  
WASY CLASSIC 639C **AGE-EPDs**

ACT BW  
92  
ADJ WW  
744

CE	BW	WW	YW	MK	TM	CM	SC	DC	YG	CW	RE	MB	DMI	\$TPI	\$G	\$MPI	\$IPI
EPDS 13	.1	67	103	25	58	9	.45	-1	-.62	28	1.37	-.15	.02	113	.1	97	103
% 30	30	50	45	50	55	10	70	>95	2	65	5	60	60	50	40	30	45

SYES Nice and Easy 636N lives up to his name with a calm, balanced build and a pedigree designed for functionality and longevity. This scurred, red bull by SYES Easy Going 77E is moderate framed, smooth shouldered and sound from the ground up, offering a practical kind of muscle that stays usable across a wide range of cow types. He combines a favorable calving-ease profile with steady growth and added carcass merit, making him an excellent choice for cattlemen who value trouble-free calving, consistency and cattle that simply go to work and get the job done.



LOT 17



LOT 18

# YEARLING BULLS

19

## SYES NETWORKER 22N

BULL • PUREBRED(100/86.3) • HOMO POLLED (T) • RED  
03/11/2025 • NPM3442171 • SYES 22N

COLE BUSINESSMAN 104B  
**SYES EASY GOING 77E**  
MISS SYES RANSOM 76X

RICHMOND YOGI SRD 7Y  
COLE MISS PUREPOWER 809U  
WULFS RANSOM 3059R  
MISS SYES JUSTICE 476U

COLE GENESIS 86G  
**MISS SYES GENESIS 12L**  
MISS SYES PETE 13G

HUNT CREDENTIALS 37C ET  
COLE MISS XRATED 354A  
L7 3014A  
MISS SYES AMAZING 93D **AGE-EPDs**

ACT BW  
90  
ADJ WW  
704

	CE	BW	WW	YW	MK	TM	CM	SC	DC	YG	CW	RE	MB	DMI	\$TPI	\$G	\$MPI	\$PI
EPDS	10	2.2	87	132	27	70	10	.58	18	-.51	50	1.31	-.29	.45	132	.11	109	108
%	55	70	3	5	30	5	3	55	3	25	10	10	90	90	20	25	10	40

SYES Networker 22N is a deep-ribbed, big-bodied purebred that combines cow power, growth and eye appeal in a practical, production-ready package. This homozygous polled, red son of SYES Easy Going 77E is bold through his middle, wide based and sound structured, giving him the kind of look that holds up from pasture to payweight. He separates himself with an elite growth profile—ranking in the top 5% for yearling weight and top 3% for weaning weight—while still maintaining a usable calving-ease spread.



SYES EASY GOING 77E • SIRE OF LOTS 18 & 19

20

## SYES NIXON 229N

BULL • PUREBRED(100/86.1) • HOMO POLLED (P-2) • BLACK  
04/21/2025 • NPM3442112 • SYES 229N

CELL ENVISION 7023E  
**RMKR HERCULES 020H**  
RMKR YASMINE 128Y

AHCC BARN BURNER B907  
PBRS ZSA ZSA 246Z  
GTBR UNDERTAKER 6U  
RMKR UNICORN 854U

WULFS APOSTLE T343A  
**MISS SYES APOSTLE 228J**  
MISS SYES YIELDMASTER 229C

WULFS YANKEE K689Y  
WULFS ULTRA DIAMOND 857IU  
JYF YIELDMASTER 80Y  
MISS SYES XPRESSLANE 329A **AGE-EPDs**

ACT BW  
88  
ADJ WW  
712

	CE	BW	WW	YW	MK	TM	CM	SC	DC	YG	CW	RE	MB	DMI	\$TPI	\$G	\$MPI	\$PI
EPDS	8	0	64	94	27	60	5	.95	14	-.38	27	1.24	-.16	-.25	92	.1	72	65
%	75	30	60	65	30	45	70	15	45	65	70	15	60	35	80	40	90	90

SYES Nixon 229N is a big-bodied, heavy-structured purebred that blends muscle, balance and durability in a no-nonsense package. This homozygous polled, black son of RMKR Hercules 020H is wide based with a bold rib, strong top and plenty of natural dimension, giving him the kind of herd bull presence that stands up in rugged environments. He offers a balanced performance profile with added carcass value and a sensible calving-ease spread, making him a practical option for programs focused on longevity, pounds and consistency. Nixon is built to work—and built to last.

21

## SYES NIKE 364N

BULL • PUREBRED(100/86.4) • HOMO POLLED (P-1) • RED  
03/25/2025 • NPM3442228 • SYES 364N

SYES EASY GOING 77E  
**SYES JOHN DOE 123J**  
MISS DOUBLE AGENT 103G

COLE BUSINESSMAN 104B  
MISS SYES RANSOM 76X  
SYES DOUBLE AGENT 175D  
MISS SYES PETE 103E

WZRK JIMMY DEAN 9040J  
**MISS SYES JIM DEAN 363L**  
MISS SYES ARBY 363H

WULFS GALLAGHER 7056G  
WZRK 9040G  
LFLC ARBY 5027A  
MISS SYES URBAN 362X **AGE-EPDs**

ACT BW  
82  
ADJ WW  
735

	CE	BW	WW	YW	MK	TM	CM	SC	DC	YG	CW	RE	MB	DMI	\$TPI	\$G	\$MPI	\$PI
EPDS	16	-.9	65	95	27	60	7	.39	17	-.55	34	1.22	-.12	-.46	136	.12	96	133
%	10	15	55	65	30	45	35	80	5	15	50	15	50	20	15	20	30	20

SYES Nike 364N is a heifer-safe purebred that offers a rare blend of calving ease, balance and real-world usefulness. This homozygous polled, red son of SYES John Doe 123J is moderate framed, clean fronted and sound on the move, with a smooth, functional muscle pattern that stays practical across a wide range of cow types. His numerical profile is highlighted by elite calving ease and a negative birth weight EPD, while still maintaining respectable growth and carcass merit.

22

## SYES NUMBERS 633N

BULL • PERCENTAGE(82/72.5) • HOMO POLLED (P-3) • RED  
03/20/2025 • NXM3442152 • SYES 633N

AHCC EARNING POWER 900E ET  
**LEWIS GRAVITY FLOW G62**  
MISS WULFETTE 2285Z

MAGS ANCHOR  
LVLS 9066U  
S A V PIONEER 7301  
WULFS UNEQUAL MATCH 8280U

L7 3014A  
**MISS WASY EMMA 630E**  
WASY ZERO TOLERANCE 625Z

MRL X-RATED 014X  
MISS L7 639S  
SYES USER FRIENDLY 524U  
MISS WASY XANADU 618X **AGE-EPDs**

ACT BW  
96  
ADJ WW  
720

	CE	BW	WW	YW	MK	TM	CM	SC	DC	YG	CW	RE	MB	DMI	\$TPI	\$G	\$MPI	\$PI
EPDS	12	.1	68	98	26	60	3	.95	20	-.35	10	.58	-.2	.21	50	.05	90	29
%	35	45	35	50	35	30	>95	30	1	20	>95	75	95	50	>95	80	40	>95

SYES Numbers 633N is a practical, no-frills percentage bull that puts balance and usability first. This homozygous polled, red son of Lewis Gravity Flow G62 is moderate framed, sound built and carries a smooth, functional muscle pattern that works across a wide range of cow herds. He offers a dependable spread of calving ease and growth with added carcass value, making him a sensible choice for cattlemen who appreciate bulls that do a lot of things right without needing attention.

23

## SYES NUKE 113N

BULL • PUREBRED(100/88) • HOMO POLLED (T) • BLACK  
03/25/2025 • NPM3459388 • SYES 113N

TREF EZ STREET 107E  
**TREF LONE RANGER 577L**  
TREF GEMMA 577G

WULFS CAPER 3303C  
TREF COCOA BEAN 107C  
COLE DAZZLE 74D  
TREF CASSIE 177C

LFLC CHECKING ACCOUNT 701C  
**MISS SYES CH ACCOUNT 13J**  
MISS SYES AMAZING 93D

WULFS ZIPLOCK N922Z  
LFLC 701X XTRA GOOD  
WULFS AMAZING BULL T341A  
MISS SYES NIGHTOWL 93U **AGE-EPDs**

ACT BW  
96  
ADJ WW  
710

	CE	BW	WW	YW	MK	TM	CM	SC	DC	YG	CW	RE	MB	DMI	\$TPI	\$G	\$MPI	\$PI
EPDS	8	1.6	74	102	28	65	6	.82	10	-.55	44	1.42	-.26	-.09	127	.06	81	93
%	75	60	25	50	25	20	55	20	85	15	20	4	85	50	25	90	65	60

SYES Nuke 113N is a bold, power-driven purebred that delivers extra shape and muscle in a balanced, athletic package. This homozygous polled, black son of TREF Lone Ranger 577L is square made, stout topped and sound on his feet, with the kind of dimension cattlemen appreciate. He pairs that look with solid growth and added carcass merit, making Nuke a practical option for adding muscle, pounds and consistency to a calf crop.

# YEARLING BULLS



LOT 24

24

## ONSY NICKELBACK 692N

BULL • PUREBRED(100/87) • HOMO POLLED (T) •  
04/12/2025 • NPM3522022 • ONSY 692N

ANCHOR B GOLD RUSH 48G  
**JBV GOLDSTONE 306L**  
JBV GIRL CRUSH 422B

WULFS DEVILS LAKE K118D ET  
**ONSY HENNESSY 693H**  
MISS ONSY ELLIE 692E

B BAR AUSTIN HEALY 4D ET  
ANCHOR B BAILEY 21B  
JBV EXPEDITION 205Z  
JBV BRITTANY 029X

WULFS BILLY THE KID K234B  
WULFS YOUR CHOICE 1419Y  
COLE BUSINESSMAN 104B  
MISS WASY AMY 692A

ACT BW  
98  
ADJ WW  
754

	CE	BW	WW	YW	MK	TM	CM	SC	DC	YG	CW	RE	MB	DMI	\$TPI	\$G	\$MPI	\$IPI
EPDS	5	4.4	75	110	29	66	5	.93	10	-.53	42	1.44	-.01	.3	128	.05	66	90
%	95	95	25	30	20	15	70	15	85	15	25	3	25	80	25	95	95	60

ONSY Nickelback 692N is a stout, power-built purebred with added muscle and real-world performance written all over him. This homozygous polled son of JBV Goldstone 306L is wide topped, deep bodied and sound on his feet, offering the kind of rugged build that holds up in production settings. He backs it up with strong growth and carcass value, making Nickelback a solid option for adding pounds, shape and durability to the next calf crop.



LOT 25

25

## JNTL NEWT 750N

BULL • PUREBRED(100/90.1) • HOMO POLLED (P-2) • RED  
03/30/2025 • NPM3419786 • JNTL 750N

ANCHOR B GOLD RUSH 48G  
**JBV GOLDSTONE 306L**  
JBV GIRL CRUSH 422B

WULFS DEVILS LAKE K118D ET  
**MISS SYES DEV LAKE 87J**  
MISS SYES FRIENDLY 87B

B BAR AUSTIN HEALY 4D ET  
ANCHOR B BAILEY 21B  
JBV EXPEDITION 205Z  
JBV BRITTANY 029X

WULFS BILLY THE KID K234B  
WULFS YOUR CHOICE 1419Y  
SYES USER FRIENDLY 524U  
MISS SYES XEROX 89Z

ACT BW  
98  
ADJ WW  
705

	CE	BW	WW	YW	MK	TM	CM	SC	DC	YG	CW	RE	MB	DMI	\$TPI	\$G	\$MPI	\$IPI
EPDS	7	2.9	76	115	26	64	5	.8	14	-.53	50	1.43	-.14	.11	146	.11	78	111
%	80	80	20	25	40	20	70	20	45	15	10	3	55	65	4	25	75	40

JNTL Newt 750N is a big-centered, power-oriented purebred that brings muscle, depth and performance together in a rugged, efficient package. This homozygous polled, red son of JBV Goldstone 306L is wide topped, square hipped and sound on the move, with the kind of stout build that holds up in real-world production. Backed by strong growth and added carcass value, Newt is built to add pounds, shape and durability to a calf crop.



LOT 26

26

## SYES NIGHT VISION 520N

BULL • PUREBRED(100/89.2) • HOMO POLLED (P-3) • HOMO BLACK (T)  
03/23/2025 • NPM3442141 • SYES 520N

COLE BUSINESSMAN 104B  
**SYES EASY GOING 77E**  
MISS SYES RANSOM 76X

DLVL CANYON 546C  
**MISS SYES CANYON 519E**  
MISS SYES YAHOO 518B

RICHMOND YOGI SRD 7Y  
COLE MISS PUREPOWER 809U  
WULFS RANSOM 3059R  
MISS SYES JUSTICE 476U

JYF ZEEK 151Z  
DLVL MISS WORKHORSE 170Y  
LFLC YAHOO  
MISS SYES FINAL TIME 519W

ACT BW  
92  
ADJ WW  
682

	CE	BW	WW	YW	MK	TM	CM	SC	DC	YG	CW	RE	MB	DMI	\$TPI	\$G	\$MPI	\$IPI
EPDS	8	1	63	91	23	54	5	.6	13	-.6	31	1.36	-.26	-.61	119	.13	83	104
%	75	45	65	70	75	75	70	40	60	4	60	5	85	15	40	15	60	45

SYES Night Vision 520N is a double homozygous purebred that combines muscle, balance and added carcass merit in a practical, work-ready design. This homozygous polled, homozygous black son of SYES Easy Going 77E is square made, deep bodied and sound on the move, offering the kind of structure and substance cattlemen rely on. With a well-rounded performance profile and added carcass value, Night Vision is built to add consistency, pounds and durability to the next calf crop.

# YEARLING BULLS

27

## SYES NAVID 122N

BULL • PUREBRED(100/89) • SCURRED • HET BLACK (T)  
03/22/2025 • NPM3442090 • SYES 122N

COLE BUSINESSMAN 104B  
**SYES EASY GOING 77E**  
MISS SYES RANSOM 76X

RICHMOND YOGI SRD 7Y  
COLE MISS PUREPOWER 809U  
WULFS RANSOM 3059R  
MISS SYES JUSTICE 476U

WULFS GOOD LUCK 4036G  
**MISS SYES GOOD LUCK 127J**  
MISS SYES EASY GOING 126G

HUNT CREDENTIALS 37C ET  
WULFS BARBARA ANN 4036B  
SYES EASY GOING 77E  
MISS SYES YAHOO 226A

ACT BW  
80  
ADJ WW  
744

#GE-EPDS

	CE	BW	WW	YW	MK	TM	CM	SC	DC	YG	CW	RE	MB	DMI	\$TPI	\$G	\$MPI	\$IPI
EPDS	17	-2.5	72	104	24	60	10	.55	5	-.54	36	1.28	-.32	-18	125	.1	121	129
%	10	3	35	45	65	45	3	55	95	15	45	10	95	40	30	40	1	20

SYES Navid 122N is a heifer-safe purebred that blends calving ease, balance and practical muscle in a clean, athletic package. This scurred son of SYES Easy Going 77E is moderate framed, sound on his feet and smooth made, with a strong calving-ease profile and a negative birth weight EPD. Navid offers a sleep-easy option that still brings consistency, structure and long-term usability to the herd.



LOT 27

28

## SYES NATO 266N

BULL • PUREBRED(90/81) • SCURRED • RED (T)  
04/06/2025 • NPM3442117 • SYES 266N

CELL ENVISION 7023E  
**L7 GENUINE VISION 9033G**  
MISS L7 567C

AHCC BARN BURNER B907  
PBRs ZSA ZSA 246Z  
L7 ALL THE ANSWERS 3056A  
MISS L7 323A

SYES ENCORE 315E  
**MISS SYES ENCORE 265K**  
MISS SYES EMPIRE 265H

LFCL CHECKING ACCOUNT 701C  
MISS SYES ROSCOE 316X  
LFCL EMPIRE 903E  
MISS SYES BUSINESSMAN 266E

ACT BW  
86  
ADJ WW  
762

#GE-EPDS

	CE	BW	WW	YW	MK	TM	CM	SC	DC	YG	CW	RE	MB	DMI	\$TPI	\$G	\$MPI	\$IPI
EPDS	4	.9	73	119	26	62	5	1.05	17	-.54	37	1.53	.05	.22	123	.15	66	86
%	95	45	30	20	40	35	70	10	5	15	40	2	15	75	35	4	95	65

SYES Nato 266N is a stout, high-performing purebred that brings added muscle and growth in a balanced, eye-appealing package. This scurred son of L7 Genuine Vision 9033G is long bodied, square hipped and sound on the move, offering both substance and structural integrity. With strong growth and added carcass merit, Nato is built to add pounds and value while maintaining a practical, functional design.



L7 GENUINE VISION 9033G • SIRE OF LOT 28

29

## SYES NOW OR NEVER 62N

BULL • PUREBRED(100/86) • HOMO POLLED (P-2) • HOMO BLACK (T)  
04/06/2025 • NPM3442076 • SYES 62N

CELL ENVISION 7023E  
**RMKR HERCULES 020H**  
RMKR YASMINE 128Y

AHCC BARN BURNER B907  
PBRs ZSA ZSA 246Z  
GTBR UNDERTAKER 6U  
RMKR UNICORN 854U

SYES USER FRIENDLY 524U  
**MISS SYES FRIENDLY 462D**  
MISS SYES XEROX 461B

WULFS RANSOM 3059R  
MISS SYES JUSTICE 224S  
DLVL XEROX 023X  
MISS SYES WORKTIME 463Z

ACT BW  
102  
ADJ WW  
681

#GE-EPDS

	CE	BW	WW	YW	MK	TM	CM	SC	DC	YG	CW	RE	MB	DMI	\$TPI	\$G	\$MPI	\$IPI
EPDS	8	2.5	76	118	20	58	3	.7	13	-.37	42	1.05	-.38	-.09	112	.16	82	70
%	75	75	20	20	95	55	95	30	60	70	25	45	>95	50	50	3	65	85

SYES Now or Never 62N is a double homozygous purebred that offers muscle, balance and a rugged, production-driven design. This homozygous polled, homozygous black son of RMKR Hercules 020H is stout topped, deep bodied and sound structured, with the kind of build that holds up under real-world use. Backed by solid growth and added carcass value, Now or Never is built to add consistency, pounds and durability to a calf crop.



LOT 29

# YEARLING BULLS

30

## SYES NATIONAL GUARD 201N

BULL • PUREBRED(100/87.6) • HOMO POLLED (P-2) • RED  
04/01/2025 • NPM3459390 • SYES 201N

TREF EZ STREET 107E  
**TREF LONE RANGER 577L**  
TREF GEMMA 577G

WULFS CAPER 3303C  
TREF COCOA BEAN 107C  
COLE DAZZLE 74D  
TREF CASSIE 177C

LFLC BANK ACCOUNT 701B  
**MISS SYES BANK AC 601G**  
MS BASY 464Z 602E

WULF'S ZIPLOCK N92ZZ  
LFLC 701X XTRA GOOD  
SYES XEROX 464Z  
MISS BASY WORKTIME 601Y **AGE-EPDs**

ACT BW  
98  
ADJ WW  
713

CE	BW	WW	YW	MK	TM	CM	SC	DC	YG	CW	RE	MB	DMI	\$TPI	\$G	\$MPI	\$IPI	
EPDS	8	1.4	75	108	30	67	5	.48	8	-.55	36	1.33	-.21	.08	113	.08	78	74
%	75	55	25	35	15	10	70	70	90	15	45	10	75	65	50	65	75	80

SYES National Guard 201N is a solid, dependable purebred that offers balance, muscle and a sound, work-ready build. This homozygous polled, red son of TREF Lone Ranger 577L is square made, deep ribbed and structurally correct, with the kind of design that fits a wide range of production environments. He combines steady growth with added carcass merit, making National Guard a reliable option for adding consistency and long-term value to the herd.

31

## SYES NOA 164N

BULL • PUREBRED(93/83.4) • SCURRED • RED  
03/07/2025 • NPM3419824 • SYES 164N

WULFS GALLAGHER 7056G  
**WZRK JIMMY DEAN 9040J**  
WZRK 9040G

WULFS XCELLSIOR X252X  
WULFS EDWINNA 7056E  
L7 EVERLAST 7007E  
WZRK ETTA 7061E

ROMN WALK THE WALK 101W  
**MISS SYES WALK WALK 165L**  
MISS SYES ARBY 164G

WULFS RIDGLEY 3172R  
ROMN TUTU 40T  
LFLC ARBY 5027A  
MISS SYES XCLUSIVE 162C **AGE-EPDs**

ACT BW  
82  
ADJ WW  
722

CE	BW	WW	YW	MK	TM	CM	SC	DC	YG	CW	RE	MB	DMI	\$TPI	\$G	\$MPI	\$IPI	
EPDS	14	.4	68	101	30	64	7	.48	18	-.34	35	.87	.1	-.24	130	.12	98	141
%	20	35	45	50	15	20	35	70	3	80	45	80	10	35	25	20	25	10

SYES Noa 164N is a heifer-safe purebred that combines calving ease, balance and a clean, functional design. This scurred, red bull is smooth shouldered, sound on his feet and moderate framed, offering a dependable option for use on younger females. With a favorable calving-ease profile and added maternal strength, Noa is built to create problem-free starts and productive replacements.

32

## SYES NASCAR 320N

BULL • PUREBRED(100/90.1) • HOMO POLLED (P-2) • RED  
03/26/2025 • NPM3442126 • SYES 320N

ANCHOR B GOLD RUSH 48G  
**JBV GOLDSTONE 306L**  
JBV GIRL CRUSH 422B

B BAR AUSTIN HEALY 4D ET  
ANCHOR B BAILEY 21B  
JBV EXPEDITION 205Z  
JBV BRITTANY 029X

WULFS DEVILS LAKE K118D ET  
**MISS SYES DEV LAKE 323J**  
MISS SYES FRIENDLY 324X

WULFS BILLY THE KID K234B  
WULFS YOUR CHOICE 1419Y  
SYES USER FRIENDLY 524U  
MISS SYES PLATINUM 121U **AGE-EPDs**

ACT BW  
108  
ADJ WW  
764

CE	BW	WW	YW	MK	TM	CM	SC	DC	YG	CW	RE	MB	DMI	\$TPI	\$G	\$MPI	\$IPI	
EPDS	1	4.5	76	116	27	65	1	.78	12	-.51	48	1.53	-.1	.04	134	.11	57	81
%	>95	>95	20	25	30	20	>95	30	70	25	10	2	45	60	20	25	>95	75

SYES NASCAR 320N is a powerful, high-performing purebred that brings extra muscle, depth and performance in a stout, eye-catching package. This homozygous polled, red son of JBV Goldstone 306L is wide topped, bold ribbed and sound on his feet, offering real shape with structural integrity. With elite growth and added carcass value, NASCAR is built to add pounds, power and consistency to the next generation.

33

## SYES NORTHWEST 110N

BULL • PUREBRED(100/89.6) • HOMO POLLED (P-2) • RED  
03/12/2025 • NPM3442087 • SYES 110N

SYES EASY GOING 77E  
**SYES KNOCKOUT 23K**  
MISS SYES BACKSTAGE 32H

COLE BUSINESSMAN 104B  
MISS SYES RANSOM 76X  
LFLC CHECKING ACCOUNT 701C  
MISS SYES CANYON 31F

SYES USER FRIENDLY 524U  
**MISS SYES FRIENDLY 106C**  
MISS SYES AGLOW 146A

WULFS RANSOM 3059R  
MISS SYES JUSTICE 224S  
WULFS XCLUSIVE 2458X  
MISS SYES NIGHT OWL 100S **AGE-EPDs**

ACT BW  
76  
ADJ WW  
698

CE	BW	WW	YW	MK	TM	CM	SC	DC	YG	CW	RE	MB	DMI	\$TPI	\$G	\$MPI	\$IPI	
EPDS	18	-2.5	62	87	24	55	8	.75	12	-.41	16	.96	-.24	-.35	82	.09	95	73
%	3	3	65	75	65	70	20	30	70	55	95	65	80	25	95	50	30	80

SYES Northwest 110N is a heifer-safe purebred that combines elite calving ease with a clean, functional build. This homozygous polled, red son of SYES Knockout 23K is smooth shouldered, sound on his feet and moderate framed, making him an easy choice for use on young females. With a strong calving-ease profile and maternal balance, Northwest is built for problem-free starts and long-term productivity.



**JBV GOLDSTONE 306L** • SIRE OF LOT 32



**LOT 33**

# YEARLING BULLS

34

## SYES NEPTUNE 5N

BULL • PUREBRED(100/89.2) • HOMO POLLED (T) • RED  
04/03/2025 • NPM3442060 • SYES 5N

WULFS DEVILS LAKE K118D ET  
**SYES HARDROCK 65H**  
MISS SYES WORKTIME 66B

WULFS BILLY THE KID K234B  
WULFS YOUR CHOICE 1419Y  
CHTT WORK TIME 4925W  
MISS SYES 261S 166U

JYF EXTRA CHUNK 518E  
**MISS SYES EX CHUNK 4H**  
MISS SYES BERMUDA 4E

JYF CHUNK 35C  
TMF MISS 118W  
SYES BERMUDA 559B  
MISS SYES TRAIL 5B

ACT BW  
94  
ADJ WW  
691

%GE-EPDs

	CE	BW	WW	YW	MK	TM	CM	SC	DC	YG	CW	RE	MB	DMI	\$TPI	\$G	\$MPI	\$PI
EPDS	11	1.1	63	98	28	59	6	.44	11	-.65	32	1.46	-.18	-.02	120	.1	81	95
%	45	50	65	55	25	50	55	70	80	1	55	3	65	55	40	40	65	55

SYES Neptune 5N is a stout, muscular purebred that offers extra shape and power in a sound, well-balanced design. This homozygous polled, red son of SYES Hardrock 65H is deep bodied, square made and built to hold condition while maintaining structural integrity. With steady growth and added carcass value, Neptune is a practical option for adding muscle and durability to a calf crop.



SYES HARDROCK 65H • SIRE OF LOT 34

35

## SYES NO DICE 936N

BULL • PUREBRED(100/88.2) • HOMO POLLED (P-2) • RED  
03/31/2025 • NPM3442163 • SYES 936N

TREF EZ STREET 107E  
**TREF LONE RANGER 577L**  
TREF GEMMA 577G

WULFS CAPER 3303C  
TREF COCOA BEAN 107C  
COLE DAZZLE 74D  
TREF CASSIE 177C

WULFS DEVILS LAKE K118D ET  
**MISS SYES DEVILS LAKE 935**  
MISS SYES 464Z 933B

WULFS BILLY THE KID K234B  
WULFS YOUR CHOICE 1419Y  
SYES XEROX 464Z  
MISS SYES SEN LODESTAR 93

ACT BW  
86  
ADJ WW  
674

%GE-EPDs

	CE	BW	WW	YW	MK	TM	CM	SC	DC	YG	CW	RE	MB	DMI	\$TPI	\$G	\$MPI	\$PI
EPDS	9	.4	66	94	26	59	4	.62	17	-.48	51	1.49	-.17	-.16	147	.07	70	121
%	65	35	55	65	40	50	85	40	5	30	5	2	65	40	3	80	90	30

SYES No Dice 936N is a stout, square-made purebred that offers extra muscle and depth in a balanced, functional package. This homozygous polled, red son of TREF Lone Ranger 577L is bold ribbed, wide based and sound on the move, with the kind of build that holds up in production settings. Backed by strong carcass value and a practical performance profile, No Dice is built to add shape, consistency and durability to the herd.



LOT 35

36

## SYES NON COMPLIANT 935N

BULL • PUREBRED(90/81.8) • HOMO POLLED (P-1) • RED  
03/31/2025 • NPM3442162 • SYES 935N

CELL ENVISION 7023E  
**L7 GENUINE VISION 9033G**  
MISS L7 567C

AHCC BARN BURNER B907  
PBRS ZSA ZSA 246Z  
L7 ALL THE ANSWERS 3056A  
MISS L7 323A

SYES XEROX 464Z  
**MISS SYES 464Z 933B**  
MISS SYES SEN LODESTAR 93

DLVL XEROX 023X  
MISS SYES ROSCOE 464T  
SENNETT LODESTAR 502R  
MISS SYES KING WULF 930G

ACT BW  
96  
ADJ WW  
674

%GE-EPDs

	CE	BW	WW	YW	MK	TM	CM	SC	DC	YG	CW	RE	MB	DMI	\$TPI	\$G	\$MPI	\$PI
EPDS	4	3.9	68	106	23	57	2	.85	20	-.4	36	1.05	-.12	-.14	110	.15	64	75
%	95	95	45	40	75	60	>95	20	1	60	45	45	50	45	55	4	>95	80

SYES Non Compliant 935N is a rugged, square-made purebred that brings muscle and durability in a practical, no-nonsense design. This homozygous polled, red son of L7 Genuine Vision 9033G is deep bodied, sound structured and built to work, offering added shape without sacrificing function. With steady growth and solid carcass merit, Non Compliant is a dependable option for adding consistency and toughness to the herd.



LOT 36

# YEARLING BULLS



LOT 37

37

## SYES NERO 178N

BULL • PUREBRED(100/86.5) • HOMO POLLED (T) • HET BLACK (T)  
04/18/2025 • NPM3442197 • SYES 178N

CELL ENVISION 7023E  
**RMKR HERCULES 020H**  
RMKR YASMINE 128Y

SYES EASY GOING 77E  
**MISS SYES EASYGOING 478J**  
MISS SYES XANDER 476Z

AHCC BARN BURNER B907  
PBR5 ZSA ZSA 246Z  
GTBR UNDERTAKER 6U  
RMKR UNICORN 854U  
COLE BUSINESSMAN 104B  
MISS SYES RANSOM 76X  
RICHMOND XANDER SRD 22X  
MISS SYES NIGHT OWL 472S

ACT BW  
86  
ADJ WW  
693

	CE	BW	WW	YW	MK	TM	CM	SC	DC	YG	CW	RE	MB	DMI	\$TPI	\$G	\$MPI	\$IPI
EPDS	11	0	68	97	24	58	5	.78	13	-.37	17	.85	-.27	-.12	66	.08	82	35
%	45	30	45	60	65	55	70	30	60	70	90	80	85	>95	65	65	>95	

SYES Nero 178N is a well-balanced purebred that offers muscle, structure and a practical, work-ready build. This homozygous polled son of RMKR Hercules 020H is square made, sound on his feet and moderate in his design, with a smooth, functional muscle pattern. Nero is a dependable option for adding consistency, durability and real-world usability to the herd.

38

## SYES NEON 381N

BULL • PUREBRED(100/88.3) • SCURRED • BLACK  
03/24/2025 • NPM3459394 • SYES 381N

TREF EZ STREET 107E  
**TREF LONE RANGER 577L**  
TREF GEMMA 577G

WULFS CAPER 3303C  
TREF COCOA BEAN 107C  
COLE DAZZLE 74D  
TREF CASSIE 177C

LFLC CHECKING ACCOUNT 701C  
**MISS SYES CHECKING AC 381E**  
MISS SYES PETE 381C

WULF'S ZIPLOCK N922Z  
LFLC 701X XTRA GOOD  
L7 3014A  
MISS SYES DUKE 382R

ACT BW  
94  
ADJ WW  
710

GE-EPDS

	CE	BW	WW	YW	MK	TM	CM	SC	DC	YG	CW	RE	MB	DMI	\$TPI	\$G	\$MPI	\$IPI
EPDS	8	2.3	76	109	28	66	5	.53	16	-.55	52	1.36	-.32	.03	142	.09	79	101
%	75	75	20	35	25	15	70	55	10	15	4	5	95	60	10	50	70	50

SYES Neon 381N is a stout, square-made purebred that brings extra muscle and dimension in a sound, functional package. This scurred, black son of TREF Lone Ranger 577L is wide topped, deep ribbed and built to hold up in real-world production settings. With strong carcass value and a balanced performance profile, Neon is designed to add shape, consistency and durability to the herd.

39

## SYES NODAK 603N

BULL • PUREBRED(100/89.1) • HOMO POLLED (P-2) • RED  
03/21/2025 • NPM3442149 • SYES 603N

SYES EASY GOING 77E  
**SYES KNOCKOUT 23K**  
MISS SYES BACKSTAGE 32H

WULFS DEVILS LAKE K118D ET  
**MISS SYES DEVILS LAKE 601H**  
MS BASY 464Z 602E

COLE BUSINESSMAN 104B  
MISS SYES RANSOM 76X  
LFLC CHECKING ACCOUNT 701C  
MISS SYES CANYON 31F

WULFS BILLY THE KID K234B  
WULFS YOUR CHOICE 1419Y  
SYES XEROX 464Z  
MISS BASY WORKTIME 601Y

ACT BW  
78  
ADJ WW  
694

	CE	BW	WW	YW	MK	TM	CM	SC	DC	YG	CW	RE	MB	DMI	\$TPI	\$G	\$MPI	\$IPI
EPDS	13	-.1	72	109	28	64	8	.85	15	-.61	19	1.45	-.25	.24	84	.1	91	49
%	30	25	35	35	25	20	20	20	20	3	90	3	85	75	90	40	40	>95

SYES Nodak 603N is a double homozygous purebred that combines calving ease, balance and a clean, functional design. This homozygous polled, red son of SYES Knockout 23K is smooth made, sound on his feet and moderate framed, with a well-rounded performance profile. Nodak offers a reliable option for adding consistency, usability and long-term durability to the herd.

40

## SYES NAVIGATOR 127N

BULL • PERCENTAGE(82/69.7) • HOMO POLLED (P-3) • HOMO BLACK (T)  
03/01/2025 • NXM3442191 • SYES 127N

AHCC EARNING POWER 900E ET  
**LEWIS GRAVITY FLOW G62**  
MISS WULFETTE 2285Z

BAR JZ AMAZING BULL 157H  
**MISS SYES JZ AMAZING 128L**  
MISS SYES CADILLAC 129F

MAGS ANCHOR  
LVLS 9066U  
SA V PIONEER 7301  
WULFS UNEQUAL MATCH 8280U

WULFS AMAZING BULL T341A  
BAR JZ TENA 481C  
ROMN CADILLAC JACK 101C  
MISS SYES XCLUSIVE 128A

ACT BW  
80  
ADJ WW  
622

	CE	BW	WW	YW	MK	TM	CM	SC	DC	YG	CW	RE	MB	DMI	\$TPI	\$G	\$MPI	\$IPI
EPDS	11	.8	68	110	28	62	6	1.5	11	-.2	39	.68	-.04	.5	105	.1	93	102
%	45	60	35	30	15	25	65	3	65	45	55	65	80	75	75	25	35	65

SYES Navigator 127N is a double homozygous, heifer-safe percentage bull that offers balance, calving ease and real-world functionality. This homozygous polled, homozygous black son of Lewis Gravity Flow G62 is smooth made, sound structured and moderate framed, making him an easy fit on younger females. Navigator provides a dependable blend of usability, consistency and long-term productivity.



LOT 40

# YEARLING BULLS

41

## SYES NUTS AND BOLTS 317N

BULL • PUREBRED(100/89.9) • HOMO POLLED (P-2) • RED  
04/19/2025 • NPM3442219 • SYES 317N

ANCHOR B GOLD RUSH 48G  
**JBV GOLDSTONE 306L**  
JBV GIRL CRUSH 422B

WULFS XCLUSIVE 2458X  
**MISS SYES XCLUSIVE 317B**  
MISS SYES R JUST 318P

B BAR AUSTIN HEALY 4D ET  
ANCHOR B BAILEY 21B  
JBV EXPEDITION 205Z  
JBV BRITTANY 029X

WZRK PRIMESTAR 861P  
WULFS MISSIVE 2258M  
ROMN JUSTICE  
MISS SYES FARMER 319M

ACT BW  
94  
ADJ WW  
681

#GE-EPDs

CE	BW	WW	YW	MK	TM	CM	SC	DC	YG	CW	RE	MB	DMI	\$TPI	\$G	\$MPI	\$IPI	
EPDS	8	4.5	69	106	27	61	5	.7	17	-.57	39	1.33	-.4	.05	113	.11	76	66
%	75	>95	45	40	30	40	70	30	5	10	35	10	>95	60	50	25	80	85

SYES Nuts And Bolts 317N is a stout, workmanlike purebred built with muscle, depth and a sound, functional design. This homozygous polled, red son of JBV Goldstone 306L is square made, bold ribbed and structurally correct, offering a dependable blend of power and balance. Nuts And Bolts is the kind that fits a wide range of programs and brings consistency and durability to the calf crop.

42

## SYES NEVILLE 271N

BULL • PUREBRED(100/89) • HOMO POLLED (T) • HET BLACK (T)  
03/03/2025 • NPM3442210 • SYES 271N

RUNL RIALTO 135R  
**RUNL JUSTIFIED 364J**  
RUNL EVENING GLOW 205 E

SYES EASY GOING 77E  
**MISS SYES EASY GOING 270L**  
MISS SYES CH ACCOUNT 270J

JCL LODESTAR 27L  
RUNL 782N  
AHCC BADLANDS 908B  
RUNL BLYSSE 106 B

COLE BUSINESSMAN 104B  
MISS SYES RANSOM 76X  
LFLC CHECKING ACCOUNT 701C  
MISS SYES XCLUSIVE 271F

ACT BW  
80  
ADJ WW  
653

#GE-EPDs

CE	BW	WW	YW	MK	TM	CM	SC	DC	YG	CW	RE	MB	DMI	\$TPI	\$G	\$MPI	\$IPI	
EPDS	13	.6	80	123	24	64	9	.48	16	-.36	37	.84	-.03	.57	113	.08	102	103
%	30	40	15	15	65	20	10	70	10	70	40	85	25	95	50	65	20	45

SYES Neville 271N is a heifer-safe purebred that blends calving ease, balance and a clean, athletic build. This homozygous polled son of RUNL Justified 364J is smooth made, sound on his feet and moderate framed, offering confidence on younger females without giving up growth. Neville is a practical, easy-to-use bull built for trouble-free calving and long-term productivity.

43

## SYES NEW IN TOWN 177N

BULL • PUREBRED(91/81.1) • HOMO POLLED (T) • HET BLACK (T)  
03/06/2025 • NPM3442196 • SYES 177N

COLE BUSINESSMAN 104B  
**SYES EASY GOING 77E**  
MISS SYES RANSOM 76X

LEWIS GRAVITY FLOW G62  
**MISS SYES GRAVITY FL 177L**  
MISS SYES CH ACCOUNT 477J

RICHMOND YOGI SRD 7Y  
COLE MISS PUREPOWER 809U  
WULFS RANSOM 3059R  
MISS SYES JUSTICE 476U

AHCC EARNING POWER 900E ET  
MISS WULFETTE 2285Z  
LFLC CHECKING ACCOUNT 701C  
MISS SYES CADILLAC 478F

ACT BW  
78  
ADJ WW  
673

#GE-EPDs

CE	BW	WW	YW	MK	TM	CM	SC	DC	YG	CW	RE	MB	DMI	\$TPI	\$G	\$MPI	\$IPI	
EPDS	16	-1.4	68	102	27	61	11	.84	17	-.48	36	1.18	-.13	.23	122	.07	110	129
%	10	10	45	50	30	40	1	20	5	30	45	20	55	75	35	80	10	20

SYES New In Town 177N is a heifer-safe purebred that offers calving ease, balance and a smooth, functional design. This homozygous polled son of SYES Easy Going 77E is clean fronted, sound on his feet and moderate framed, making him an easy fit on younger females. With a strong calving-ease profile and added maternal value, New In Town is built for trouble-free starts and productive cows down the road.



LOT 43

44

## SYES NIGHT RIDER 279N

BULL • PUREBRED(100/87) • HOMO POLLED (P-2) • HOMO BLACK (T)  
03/25/2025 • NPM3442119 • SYES 279N

WULFS ENDURANCE K069E ET  
**WULFS LONG HAUL K503L ET**  
WULFS CARRIEANN 5201C

LFLC ARBY 5027A  
**MISS SYES ARBY 979G**  
MISS SYES ROSCOE 980X

WULFS BILLY THE KID K234B  
WULFS XUJANA 0566X  
WULFS WILLARD 5115W  
WULFS YOU'RE MINE 1002Y

LFLC WINDFALL 56W  
HOEL RIGAMAROLE  
PLND ROSCOE 051R  
MISS SYES WARDEN 981R

ACT BW  
96  
ADJ WW  
648

#GE-EPDs

CE	BW	WW	YW	MK	TM	CM	SC	DC	YG	CW	RE	MB	DMI	\$TPI	\$G	\$MPI	\$IPI	
EPDS	8	3.2	63	98	23	54	4	.72	9	-.3	33	.97	-.13	-.17	101	.11	69	78
%	75	85	65	55	75	75	85	30	90	90	50	60	55	40	70	25	95	75

SYES Night Rider 279N is a powerful, double-homozygous purebred bull that blends muscle, structure and reliability into one complete package. Sired by Wulfs Long Haul K503L ET, he is square built, wide based and sound on his feet with a stout, work-ready design. Night Rider offers added shape and functional performance while maintaining a balanced EPD profile, making him a dependable option for adding durability, consistency and eye appeal to the next calf crop.



LOT 44

# YEARLING BULLS



LOT 45

45

## SYES NATHAN 205N

BULL • PUREBRED(93/83.6) • HOMO POLLED (T) • RED  
03/04/2025 • NPM3442202 • SYES 205N

WULFS GALLAGHER 7056G  
**WZRK JIMMY DEAN 9040J**  
WZRK 9040G

WULFS XCELLSIOR X252X  
WULFS EDWINNA 7056E  
L7 EVERLAST 7007E  
WZRK ETTA 7061E

SYES JOHN DOE 123J  
**MISS SYES JOHN DOE 200L**  
MISS SYES EZ STREET 201J

SYES EASY GOING 77E  
MISS DOUBLE AGENT 103G  
TREF EZ STREET 107E  
MISS SYES BANK AC 601G

ACT BW  
72  
ADJ WW  
684

	CE	BW	WW	YW	MK	TM	CM	SC	DC	YG	CW	RE	MB	DMI	\$TPI	\$G	\$MPI	\$IPI
EPDS	17	-4.1	61	88	29	60	10	.26	18	-.7	34	1.53	-.18	-.4	142	.1	100	141
%	10	1	70	75	20	45	3	90	3	1	50	2	65	20	10	40	25	10

SYES Nathan 205N is a calving-ease-focused purebred built for heifer use, combining elite CED with an ultra-low BW profile and a smooth, functional build. Sired by WZRK Jimmy Dean 9040J, he offers balance, soundness and maternal strength, making him a smart option for adding reliability, consistency and long-term productivity to young females.

46

## SYES NEIL 75N

BULL • PUREBRED(100/85.8) • HOMO POLLED (P-3) • BLACK  
04/04/2025 • NPM3442080 • SYES 75N

CELL ENVISION 7023E  
**RMKR HERCULES 020H**  
RMKR YASMINE 128Y

AHCC BARN BURNER B907  
PBRZ ZSA ZSA 246Z  
GTBR UNDERTAKER 6U  
RMKR UNICORN 854U

ROMN CADILLAC JACK 101C  
**MISS SYES CADILLAC 77H**  
MISS SYES RANSOM 76X

WULFS APOSTLE T343A  
ROMN RITA 28R  
WULFS RANSOM 3059R  
MISS SYES JUSTICE 476U

ACT BW  
76  
ADJ WW  
670

IGE-EPDS

	CE	BW	WW	YW	MK	TM	CM	SC	DC	YG	CW	RE	MB	DMI	\$TPI	\$G	\$MPI	\$IPI
EPDS	15	-2.3	61	85	21	52	8	.97	17	-.4	22	1.01	-.07	-.63	105	.11	90	107
%	15	4	70	80	90	85	20	15	5	60	80	55	40	10	65	25	45	45

SYES Neil 75N is a heifer-safe purebred with strong calving ease, a negative BW profile and a smooth, athletic build. Sired by RMKR Hercules 020H, he offers balance, soundness and maternal reliability while still maintaining enough growth and shape to add value without sacrificing ease of use.

47

## SYES NOTEBOOK 131N

BULL • PUREBRED(100/90.2) • HOMO POLLED (T) • RED  
03/31/2025 • NPM3442093 • SYES 131N

ANCHOR B GOLD RUSH 48G  
**JBV GOLDSTONE 306L**  
JBV GIRL CRUSH 422B

B BAR AUSTIN HEALY 4D ET  
ANCHOR B BAILEY 21B  
JBV EXPEDITION 205Z  
JBV BRITTANY 029X

COLE BUSINESSMAN 104B  
**MISS SYES BUSINESSMAN 631G**  
WASY YOUR MINE 674Y

RICHMOND YOGI SRD 7Y  
COLE MISS PUREPOWER 809U  
SYES USER FRIENDLY 524U  
SY LASSIE 221L

ACT BW  
94  
ADJ WW  
686

	CE	BW	WW	YW	MK	TM	CM	SC	DC	YG	CW	RE	MB	DMI	\$TPI	\$G	\$MPI	\$IPI
EPDS	11	4.3	65	94	30	63	5	.93	4	-.54	29	1.26	-.18	-.42	114	.1	86	96
%	45	95	55	65	15	30	70	15	>95	15	65	15	65	20	45	40	55	55

SYES Notebook 131N is a stout, moderate purebred bull with added body, muscle and a dependable build. Sired by JBV Goldstone 306L, he combines practical growth, sound structure and a solid maternal base, making him a useful option for adding consistency and functionality to a wide range of programs.

48

## SYES NILES 21N

BULL • PERCENTAGE(82/73.1) • SCURRED • RED  
04/14/2025 • NXM3442065 • SYES 21N

AHCC EARNING POWER 900E ET  
**LEWIS GRAVITY FLOW G62**  
MISS WULFETTE 2285Z

MAGS ANCHOR  
LVLS 9066U  
SA V PIONEER 7301  
WULFS UNEQUAL MATCH 8280U

ROMN CADILLAC JACK 101C  
**MISS SYES CADILLAC 9H**  
MISS SYES ARBY 8D

WULFS APOSTLE T343A  
ROMN RITA 28R  
LFCL ARBY 5027A  
MISS SYES FRIENDLY 8Z

ACT BW  
88  
ADJ WW  
736

	CE	BW	WW	YW	MK	TM	CM	SC	DC	YG	CW	RE	MB	DMI	\$TPI	\$G	\$MPI	\$IPI
EPDS	15	1.2	67	105	31	64	6	1.4	18	-.07	37	.43	.09	.56	102	.05	93	109
%	15	65	40	35	10	20	65	5	2	75	60	90	65	80	80	80	30	55

SYES Niles 21N is a moderate, clean-made percentage bull that blends calving ease, balance and functional growth. Sired by Lewis Gravity Flow G62 and backed by a dependable maternal line, he offers a practical option for adding consistency, structure and usability to both commercial and seedstock programs.



LEWIS GRAVITY FLOW G62 • SIRE OF LOT 48

# YEARLING BULLS

49

## SYES NEW DAY 308N

BULL • PUREBRED(100/89.6) • HOMO POLLED (P-3) • RED  
04/30/2025 • NPM3442214 • SYES 308N

ANCHOR B GOLD RUSH 48G  
**JBV GOLDSTONE 306L**  
JBV GIRL CRUSH 422B

B BAR AUSTIN HEALY 4D ET  
ANCHOR B BAILEY 21B  
JBV EXPEDITION 205Z  
JBV BRITTANY 029X

WULFS DEVILS LAKE K118D ET  
**MISS SYES DEVILS LAKE 307K**  
MISS SYES CADILLAC 307G

WULFS BILLY THE KID K234B  
WULFS YOUR CHOICE 1419Y  
ROMN CADILLAC JACK 101C  
MISS SYES FRIENDLY 308X

ACT BW  
96  
ADJ WW  
693

GE-EPDs

	CE	BW	WW	YW	MK	TM	CM	SC	DC	YG	CW	RE	MB	DMI	\$TPI	\$G	\$MPI	\$IPI
EPDS	4	5.4	73	113	30	66	4	.88	15	-.47	43	1.32	-.2	.3	114	.09	66	64
%	>95	>95	30	30	15	15	85	20	20	35	25	10	70	80	45	50	95	90

SYES New Day 308N is a stout, power-oriented purebred bull with extra mass, depth and performance. A homozygous polled son of JBV Goldstone 306L, he offers added growth and carcass merit while being backed by a proven Devils Lake-influenced dam line built for durability and productivity.



LOT 49

50

## SYES NOEL 58N

BULL • PUREBRED(100/86.1) • HOMO POLLED (T) • HET BLACK (T)  
04/03/2025 • NPM3442074 • SYES 58N

WULFS ENDURANCE K069E ET  
**WULFS LONG HAUL K503L ET**  
WULFS CARRIANN 5201C

WULFS BILLY THE KID K234B  
WULFS XUANA 0566X  
WULFS WILLARD 5115W  
WULFS YOU'RE MINE 1002Y

LFLC CHECKING ACCOUNT 701C  
**MISS SYES CH ACCOUNT 58K**  
MISS SYES CADILLAC 59G

WULF'S ZIPLOCK N922Z  
LFLC 701X XTRA GOOD  
ROMN CADILLAC JACK 101C  
MISS SYES WORKTIME 559A

ACT BW  
80  
ADJ WW  
696

GE-EPDs

	CE	BW	WW	YW	MK	TM	CM	SC	DC	YG	CW	RE	MB	DMI	\$TPI	\$G	\$MPI	\$IPI
EPDS	1	4.7	76	108	25	63	4	.68	14	-.53	37	1.22	-.18	-.04	111	.08	63	61
%	>95	>95	20	35	50	30	85	40	45	15	40	15	65	55	55	65	>95	90

SYES Noel 58N is a stout, rugged purebred bull built with extra body, depth and muscle shape. Sired by Wulfs Long Haul K503L and backed by a Checking Account-influenced cow family, he offers added growth and carcass merit with the kind of durability and structure designed for real-world production.



WULFS LONG HAUL K503L ET • SIRE OF LOT 50

51

## SYES NIGHT HAWK 887N

BULL • PUREBRED(100/86.7) • HOMO POLLED (P-1) • HOMO BLACK (T)  
03/17/2025 • NPM3442249 • SYES 887N

RUNL RIALTO 135R  
**RUNL JUSTIFIED 364 J**  
RUNL EVENING GLOW 205 E

JCL LODESTAR 27L  
RUNL 782N  
AHCC BADLANDS 908B  
RUNL BLYSSE 106 B

COLE GENESIS 86G  
**MISS SYES GENESIS 887L**  
MISS SYES X-RATED 883Z

HUNT CREDENTIALS 37C ET  
COLE MISS XRATED 354A  
MRL X-RATED 014X  
MISS SYES MASTER 882R

ACT BW  
86  
ADJ WW  
656

GE-EPDs

	CE	BW	WW	YW	MK	TM	CM	SC	DC	YG	CW	RE	MB	DMI	\$TPI	\$G	\$MPI	\$IPI
EPDS	14	.7	72	105	28	64	8	.42	12	-.48	44	1.29	-.06	-.06	144	.1	92	135
%	20	40	35	40	25	20	20	70	70	30	20	10	35	50	5	40	40	15

SYES Night Hawk 887N is a double-homozygous, homo black bull built with balance, soundness and real-world usability. Sired by RUNL Justified 364J and backed by a strong Genesis and X-Rated influenced cow family, he offers a heifer-friendly calving profile with added performance and a clean, efficient build suited for both maternal and terminal programs.



LOT 51

# YEARLING BULLS

52

## SYES NEXT BIG THING 48N

BULL • PUREBRED(100/89.9) • HOMO POLLED (P-2) • RED  
04/03/2025 • NPM3442071 • SYES 48N

ANCHOR B GOLD RUSH 48G  
**JBV GOLDSTONE 306L**  
JBV GIRL CRUSH 422B

B BAR AUSTIN HEALY 4D ET  
ANCHOR B BAILEY 21B  
JBV EXPEDITION 205Z  
JBV BRITTANY 029X

SYES BACKSTAGE 466B  
**MISS SYES BACKSTAGE 908D**  
MISS SYES 923U 907B

DLVL XEROX 023X  
MISS SYES FRIENDLY 465Z  
MR SYES TRACKER 923U  
JBV CHEERLEADER 907W

ACT BW  
82  
ADJ WW  
672

GE-EPDs

CE	BW	WW	YW	MK	TM	CM	SC	DC	YG	CW	RE	MB	DMI	\$TPI	\$G	\$MPI	\$IPI
EPDS 15	-1.3	54	81	29	56	10	.55	8	-46	5	.81	-.29	-.63	64	.13	90	52
% 15	10	85	85	20	65	3	55	90	35	>95	85	90	10	>95	15	45	95

SYES Next Big Thing 48N is a well-balanced, calving-ease focused purebred with a smooth build and solid maternal backing. Sired by JBV Goldstone 306L, he offers an attractive combination of usability, structure and consistency suited for commercial and registered programs alike.

53

## SYES NEVERMORE 433N

BULL • PUREBRED(91/81.5) • HOMO POLLED (T) • HET BLACK (T)  
03/21/2025 • NPM3419830 • SYES 433N

SYES EASY GOING 77E  
**SYES KNOCKOUT 23K**  
MISS SYES BACKSTAGE 32H

COLE BUSINESSMAN 104B  
MISS SYES RANSOM 76X  
LFLC CHECKING ACCOUNT 701C  
MISS SYES CANYON 31F

LEWIS GRAVITY FLOW G62  
**MISS SYES GRAV FLOW 432J**  
MISS SYES ENCORE 431G

AHCC EARNING POWER 900E ET  
MISS WULFETTE 2285Z  
SYES ENCORE 315E  
MISS SYES EVERLY 431E ET

ACT BW  
90  
ADJ WW  
670

GE-EPDs

CE	BW	WW	YW	MK	TM	CM	SC	DC	YG	CW	RE	MB	DMI	\$TPI	\$G	\$MPI	\$IPI
EPDS 11	.1	68	112	23	57	8	1.05	13	-.46	41	1.19	-.13	.35	124	.12	75	95
% 45	30	45	30	75	60	20	10	60	35	30	20	55	85	30	20	80	55

SYES Nevermore 433N is a clean-made, functional purebred bull that blends calving ease, balance and proven maternal genetics. Backed by SYES Knockout 23K and a dam by AHCC Earning Power 900E, he offers a dependable option for adding structure, consistency and longevity to the next calf crop.

54

## SYES NEXT 24N

BULL • PUREBRED(100/87.9) • HOMO POLLED (P-1) • BLACK  
03/24/2025 • NPM3442066 • SYES 24N

WULFS ENDURANCE K069E ET  
**WULFS LONG HAUL K503L ET**  
WULFS CARRIEANN 5201C

WULFS BILLY THE KID K234B  
WULFS XUANA 0566X  
WULFS WILLARD 5115W  
WULFS YOU'RE MINE 1002Y

JYF ZEEK 151Z  
**MISS SYES ZEEK 25C**  
MISS SYES PLATINUM 425T

AHCC WOOD MOUNTAIN W796  
TMF MISS 627T  
RPLF PLATINUM 936P  
MISS SYES PAYDAY 8425F

ACT BW  
90  
ADJ WW  
636

GE-EPDs

CE	BW	WW	YW	MK	TM	CM	SC	DC	YG	CW	RE	MB	DMI	\$TPI	\$G	\$MPI	\$IPI
EPDS 9	2.9	62	86	29	60	5	.4	13	-.49	34	1.29	-.34	-.34	105	.07	74	76
% 65	80	65	80	20	45	70	70	60	30	50	10	95	25	60	80	85	80

SYES Next 24N is a sound, well-balanced purebred bull built with extra length and structural integrity. Sired by Wulfs Long Haul K503L and backed by a proven cow family, he offers a steady blend of usability, moderate growth and functional design suited for a wide range of production environments.

55

## SYES NOVA 15N

BULL • PUREBRED(100/86.4) • SCURRED • RED  
03/07/2025 • NPM3442169 • SYES 15N

SYES EASY GOING 77E  
**SYES JOHN DOE 123J**  
MISS DOUBLE AGENT 103G

COLE BUSINESSMAN 104B  
MISS SYES RANSOM 76X  
SYES DOUBLE AGENT 175D  
MISS SYES PETE 103E

BAR JZ AMAZING BULL 157H  
**MISS SYES JZ AMAZING 15L**  
MISS SYES EX CHUNK 15H

WULFS AMAZING BULL T341A  
BAR JZ TENA 481C  
JYF EXTRA CHUNK 518E  
MISS SYES COWBOY 105D

ACT BW  
70  
ADJ WW  
634

GE-EPDs

CE	BW	WW	YW	MK	TM	CM	SC	DC	YG	CW	RE	MB	DMI	\$TPI	\$G	\$MPI	\$IPI
EPDS 21	-3	57	75	26	54	8	.8	13	-.55	9	.95	-.34	-.54	76	.07	108	78
% 1	2	80	90	40	75	20	20	60	15	>95	65	95	15	>95	80	10	75

SYES Nova 15N is a heifer-safe purebred offering elite calving ease in a moderate, functional package. By SYES John Doe 123J and backed by proven maternal genetics, he combines a very strong CED profile with sound structure and practical usability for building efficient, problem-free cow herds.



LOT 54



LOT 55

# YEARLING BULLS

56

## SYES NIKOLAI 558N

BULL • PUREBRED(94/84.5) • HET POLLED • HET BLACK (T)  
04/11/2025 • NPM3442146 • SYES 558N

AUTO LUCKY GUY 140D ET  
**CELL LARAMIE 3129L ET**  
TASF GUARDIAN ANGEL 300G

AUTO LUCKY STRIKE 118B  
AUTO REBECA 479A  
TASF CROWN ROYAL 960C ET  
TASF ANGEL 612Y

SYES EASY GOING 77E  
**MISS SYES EASY GOING 557K**  
MISS SYES GV TIMER 556H

COLE BUSINESSMAN 104B  
MISS SYES RANSOM 76X  
GV BIG TIMER 328E  
MISS SYES YUNT TO 555B **GE-EPDs**

ACT BW  
90  
ADJ WW  
665

	CE	BW	WW	YW	MK	TM	CM	SC	DC	YG	CW	RE	MB	DMI	\$TPI	\$G	\$MPI	\$IPI
EPDS	9	2.5	65	98	23	55	6	.43	5	-.39	26	.81	.02	-.26	106	.12	80	96
%	65	75	55	55	75	70	55	70	95	60	70	85	20	30	60	20	70	55

SYES Nikolai 558N is a moderate, easy-fleshing purebred bull that blends structural soundness with balanced, real-world performance. Sired by CELL Laramie 3129L ET and backed by the consistent SYES Easy Going cow family, he offers solid growth, maternal strength and a practical build suited for a wide range of production environments.

57

## JNTL NATHANIEL 754N

BULL • PUREBRED(94/81.9) • HOMO POLLED (T) • HOMO BLACK (T)  
04/02/2025 • NPM3490110 • JNTL 754N

AUTO LUCKY GUY 140D ET  
**CELL LARAMIE 3129L ET**  
TASF GUARDIAN ANGEL 300G

AUTO LUCKY STRIKE 118B  
AUTO REBECA 479A  
TASF CROWN ROYAL 960C ET  
TASF ANGEL 612Y

JBV YELLOWSTONE 901G  
**MISS TJ YELLOWSTONE 753K**  
DLVL MISS AUSTIN 8153F

AHCC EARNING POWER 900E ET  
JBV GIRL CRUSH 422B  
GV AUSTIN 701A  
DLVL MISS ZANDER 5125C **GE-EPDs**

ACT BW  
94  
ADJ WW  
666

	CE	BW	WW	YW	MK	TM	CM	SC	DC	YG	CW	RE	MB	DMI	\$TPI	\$G	\$MPI	\$IPI
EPDS	5	3.9	78	123	24	63	4	.86	5	-.22	31	.57	.19	.33	99	.13	80	84
%	95	95	20	15	65	30	85	20	95	>95	60	>95	3	80	70	15	70	70

JNTL Nathaniel 754N is a double homozygous, purebred bull combining added growth with a smooth, functional build. A son of CELL Laramie 3129L ET, he offers strong performance, sound structure and added carcass value, making him a dependable option for adding pounds and consistency to black-hided calf crops.

58

## SYES NOTABLE 260N

BULL • PERCENTAGE(82/72.9) • HOMO POLLED (P-2) • RED  
03/31/2025 • NXM3442115 • SYES 260N

AHCC EARNING POWER 900E ET  
**LEWIS GRAVITY FLOW G62**  
MISS WULFETTE 2285Z

MAGS ANCHOR  
LVLS 9066U  
S A V PIONEER 7301  
WULFS UNEQUAL MATCH 8280U

LFLC BANK ACCOUNT 701B  
**MISS SYES BANK ACCOUNT 60H**  
MISS SYES XCLUSIVE 59F ET

WULF'S ZIPLOCK N922Z  
LFLC 701X XTRA GOOD  
WULFS XCLUSIVE 2458X  
MISS SYES LINEBACKER 317S **GE-EPDs**

ACT BW  
74  
ADJ WW  
641

	CE	BW	WW	YW	MK	TM	CM	SC	DC	YG	CW	RE	MB	DMI	\$TPI	\$G	\$MPI	\$IPI
EPDS	18	-2.2	67	109	26	60	11	.95	19	-.19	36	.74	-.12	.49	102	.11	105	108
%	2	15	40	30	35	30	1	30	1	50	65	55	90	75	80	20	10	60

SYES Notable 260N is a heifer-friendly, homozygous polled percentage bull that blends calving ease with practical growth. Sired by Lewis Gravity Flow G62, he offers a strong maternal backing, solid performance numbers and the kind of balanced build that works well in commercial and replacement-focused programs.



LOT 58

59

## SYES NEVEN 70N

BULL • PUREBRED(93/84) • HOMO POLLED (P-2) • RED  
04/11/2025 • NPM3442079 • SYES 70N

ANCHOR B GOLD RUSH 48G  
**JBV GOLDSTONE 306L**  
JBV GIRL CRUSH 422B

B BAR AUSTIN HEALY 4D ET  
ANCHOR B BAILEY 21B  
JBV EXPEDITION 205Z  
JBV BRITTANY 029X

WULFS GALLAGHER 7056G  
**MISS SYES GALLAGHER 72K**  
MISS SYES DIESEL 79H

WULFS XCELLSIOR X252X  
WULFS EDWINNA 7056E  
TOMV DIESEL 619D  
MISS SYES WIDELOAD 80A **GE-EPDs**

ACT BW  
74  
ADJ WW  
691

	CE	BW	WW	YW	MK	TM	CM	SC	DC	YG	CW	RE	MB	DMI	\$TPI	\$G	\$MPI	\$IPI
EPDS	18	-1.4	67	103	28	62	8	.7	11	-.37	20	.97	-.1	-.02	90	.11	101	85
%	3	10	50	45	25	35	20	30	80	70	85	60	45	55	85	25	20	65

SYES Neven 70N is a heifer-friendly, homozygous polled purebred that combines calving ease with balanced growth. A son of JBV Goldstone 306L, he offers a strong maternal pedigree, sound structure and practical performance suited for building efficient, productive cow herds.

60

## SYES NO DOUBT 356N

BULL • PUREBRED(100/87.6) • SCURRED • RED  
04/02/2025 • NPM3442131 • SYES 356N

TREF EZ STREET 107E  
**TREF LONE RANGER 577L**  
TREF GEMMA 577G

WULFS CAPER 3303C  
TREF COCOA BEAN 107C  
COLE DAZZLE 74D  
TREF CASSIE 177C

WULFS XCLUSIVE 2458X  
**MISS SYES XCLUSIVE 357F**  
MISS SYES YUNT TO 357B

WZRK PRIMESTAR 861P  
WULFS MISSIVE 2258M  
ROMN YUNT TO 109Y  
MISS SYES URBAN 356X **GE-EPDs**

ACT BW  
86  
ADJ WW  
690

	CE	BW	WW	YW	MK	TM	CM	SC	DC	YG	CW	RE	MB	DMI	\$TPI	\$G	\$MPI	\$IPI
EPDS	12	1.9	73	110	24	60	6	.62	13	-.52	39	1.32	-.06	.27	128	.08	87	109
%	35	65	30	30	65	45	55	40	60	20	35	10	35	80	25	65	50	40

SYES No Doubt 356N is a stout, well-made purebred with extra body, muscle and a solid performance profile. Sired by TREF Lone Ranger 577L, he combines structural soundness, balanced growth and added carcass value in a practical, no-nonsense package built for real-world production.

# YEARLING BULLS



LOT 61

61

## SYES NIX 415N

BULL • PUREBRED(100/84.5) • HOMO POLLED (T) • HET BLACK (T)  
04/07/2025 • NPM3442234 • SYES 415N

COLE EARNING POWER 82H  
**COLE EARNING POWER 86K**  
COLE MISS CURTAIN CALL 046H

LFLC EMPIRE 903E  
**MISS SYES EMPIRE 415L**  
MISS SYES CHECKING AC 414F

AHCC EARNING POWER 900E ET  
COLE MISS XRATED 553C  
SYES CURTAIN CALL 466C  
COLE MISS TUFF ENUFF 711E

GREENWOOD CANADIAN MADE ET  
LFLC BABY GOT BACK 903B  
LFLC CHECKING ACCOUNT 701C  
MISS SYES APOSTLE 414D

ACT BW  
84  
ADJ WW  
658

	CE	BW	WW	YW	MK	TM	CM	SC	DC	YG	CW	RE	MB	DMI	\$TPI	\$G	\$MPI	\$IPI
EPDS	10	.1	63	91	27	58	10	.93	15	-.36	34	.92	-.09	-.32	114	.09	84	109
%	55	30	65	70	30	55	3	15	20	70	50	70	45	25	45	50	60	40

SYES Nix 415N is a smooth-made, heifer-friendly purebred that blends calving ease, balance and structural correctness. Sired by Cole Earning Power 86K, he offers a practical growth curve with added maternal strength and a pedigree designed to work in real-world cow herds.

62

## SYES NOLAN 57N

BULL • PUREBRED(100/86.5) • SCURRED • HOMO BLACK (T)  
05/02/2025 • NPM3442180 • SYES 57N

CELL ENVISION 7023E  
**RMKR HERCULES 020H**  
RMKR YASMINE 128Y

AHCC BARN BURNER B907  
PBRS ZSA ZSA 246Z  
GTBR UNDERTAKER 6U  
RMKR UNICORN 854U

LFLC CHECKING ACCOUNT 701C  
**MISS SYES CHECKING AC 57F**  
MISS SYES BACKSTAGE 158D

WULF'S ZIPLOCK N922Z  
LFLC 701X XTRA GOOD  
SYES BACKSTAGE 466B  
MISS SYES PLATINUM 958U

ACT BW  
98  
ADJ WW  
703

GE-EPDS

	CE	BW	WW	YW	MK	TM	CM	SC	DC	YG	CW	RE	MB	DMI	\$TPI	\$G	\$MPI	\$IPI
EPDS	8	3.3	78	120	26	65	4	.7	15	-.49	42	1.22	-.19	.11	125	.13	85	89
%	75	90	20	20	40	20	85	30	20	30	25	15	70	65	30	15	55	65

SYES Nolan 57N is a powerful, big-spread purebred that combines added growth with muscle and carcass merit. This Hercules son offers a rugged build, strong performance numbers and a proven maternal pedigree, making him a solid option for adding pounds and durability without sacrificing balance.

63

## SYES NIGHT LITE 81N

BULL • PUREBRED(100/89.8) • HOMO POLLED (P-3) • HOMO BLACK (T)  
03/13/2025 • NPM3442082 • SYES 81N

SYES EASY GOING 77E  
**SYES KNOCKOUT 23K**  
MISS SYES BACKSTAGE 32H

L7 FALCON 8055F  
**MISS SYES FALCON 81H**  
MISS SYES CHECKING AC 81F

COLE BUSINESSMAN 104B  
MISS SYES RANSOM 76X  
LFLC CHECKING ACCOUNT 701C  
MISS SYES CANYON 31F

IVY'S BUBBA WATSON HTZ24B  
MISS L7 515C  
LFLC CHECKING ACCOUNT 701C  
MISS SYES XCLUSIVE 81D

ACT BW  
76  
ADJ WW  
651

	CE	BW	WW	YW	MK	TM	CM	SC	DC	YG	CW	RE	MB	DMI	\$TPI	\$G	\$MPI	\$IPI
EPDS	17	-1.2	68	93	27	61	10	.54	5	-.65	23	1.34	-.42	-.36	101	.09	99	76
%	10	15	45	65	30	40	3	55	95	1	80	10	>95	25	70	50	25	80

SYES Night Lite 81N is a double-homozygous, heifer-friendly purebred that blends calving ease with added balance and functionality. This Knockout son is sound, moderate and well designed, offering a dependable option for adding fertility, structure and consistency to both registered and commercial programs.



LOT 64

64

## SYES NATURAL BORN 76N

BULL • PUREBRED(100/89.9) • HOMO POLLED (P-1) • RED  
03/13/2025 • NPM3442185 • SYES 76N

SYES EASY GOING 77E  
**SYES JOHN DOE 123J**  
MISS DOUBLE AGENT 103G

JYF EXTRA CHUNK 518E  
**MISS SYES EXTRA CHUNK 76L**  
MISS SYES COMPLIANT 76G

COLE BUSINESSMAN 104B  
MISS SYES RANSOM 76X  
SYES DOUBLE AGENT 175D  
MISS SYES PETE 103E

JYF CHUNK 35C  
TMF MISS 118W  
WULFS COMPLIANT K687C ET  
MISS SYES JUSTICE 476U

ACT BW  
94  
ADJ WW  
657

	CE	BW	WW	YW	MK	TM	CM	SC	DC	YG	CW	RE	MB	DMI	\$TPI	\$G	\$MPI	\$IPI
EPDS	9	2.7	81	125	26	66	4	.42	8	-.66	45	1.66	-.25	.37	136	.11	103	108
%	65	80	10	10	40	15	85	70	90	1	20	1	85	85	15	25	20	40

SYES Natural Born 76N is a growth-oriented, powerfully constructed purebred that combines added scale with muscle and efficiency. Sired by SYES John Doe 123J, he offers strong performance and carcass value while maintaining soundness and balance, making him a solid option for adding pounds and consistency to progressive herds.

# YEARLING BULLS

65

## SYES NOAH 66N

BULL • PERCENTAGE(82/72.4) • HET POLLED (T) • HOMO BLACK (T)  
04/08/2025 • NXM3442078 • SYES 66N

AHCC EARNING POWER 900E ET  
**LEWIS GRAVITY FLOW G62**  
MISS WULFETTE 2285Z

MAGS ANCHOR  
LVLS 9066U  
S A V PIONEER 7301  
WULFS UNEQUAL MATCH 8280U

WULFS XCLUSIVE 2458X  
**MISS SYES XCLUSIVE 266D**  
MISS SYES NIGHT OWL 263S

WZRK PRIMESTAR 861P  
WULFS MISSIVE 2258M  
KRVN NIGHT OWL 223N  
MISS SYES SHILOH 262F

ACT BW  
86  
ADJ WW  
649

%GE-EPDs

CE	BW	WW	YW	MK	TM	CM	SC	DC	YG	CW	RE	MB	DMI	\$TPI	\$G	\$MPI	\$PI	
EPDS	13	-5	56	92	22	50	8	1.05	15	-.28	47	.96	-.17	.29	124	.08	75	117
%	25	30	75	65	75	80	25	15	30	30	30	95	60	45	45	85	45	

SYES Noah 66N is a balanced, heifer-safe percentage bull that blends calving ease with functional performance and added maternal strength. Sired by Lewis Gravity Flow G62, he offers a moderate, sound build with solid growth and carcass merit, making him a practical option for commercial or Lim-Flex programs looking for consistency and versatility.



LOT 65

66

## SYES NORMANDY 557N

BULL • PUREBRED(100/90.9) • SCURRED • RED  
03/28/2025 • NPM3442145 • SYES 557N

ANCHOR B GOLD RUSH 48G  
**JBV GOLDSTONE 306L**  
JBV GIRL CRUSH 422B

B BAR AUSTIN HEALY 4D ET  
ANCHOR B BAILEY 21B  
JBV EXPEDITION 205Z  
JBV BRITTANY 029X

GV BIG TIMER 328E  
**MISS SYES GV TIMER 556H**  
MISS SYES YUNT TO 555B

WULFS BIG TIMER 2004B  
GV MS BEEFMAKER PRIDE 575C  
ROMN YUNT TO 109Y  
MISS SYES TRUCK 653X

ACT BW  
90  
ADJ WW  
671

%GE-EPDs

CE	BW	WW	YW	MK	TM	CM	SC	DC	YG	CW	RE	MB	DMI	\$TPI	\$G	\$MPI	\$PI	
EPDS	12	1.8	63	96	28	59	8	.75	5	-.44	35	1.21	-.26	-.13	111	.1	89	95
%	35	65	65	60	25	50	20	30	95	45	45	20	85	45	50	40	45	55

SYES Normandy 557N is a well-balanced purebred with a moderate, functional build and dependable performance from end to end. Sired by JBV Goldstone 306L, he combines sound structure, solid growth and maternal backing, making him a reliable option for programs focused on consistency, durability and long-term productivity.

67

## SYES NORWAY 334N

BULL • PERCENTAGE(82/70.3) • HOMO POLLED (P-1) • BLACK  
03/14/2025 • NXM3442223 • SYES 334N

AHCC EARNING POWER 900E ET  
**LEWIS GRAVITY FLOW G62**  
MISS WULFETTE 2285Z

MAGS ANCHOR  
LVLS 9066U  
S A V PIONEER 7301  
WULFS UNEQUAL MATCH 8280U

WZRK JIMMY DEAN 9040J  
**MISS SYES GEN VISION 334L**  
MISS SYES URBAN 332Z

WULFS GALLAGHER 7056G  
WZRK 9040G  
WULFS URBAN COWBOY 2149U  
MISS SYES LADYS MAN 330S

ACT BW  
92  
ADJ WW  
643

%GE-EPDs

CE	BW	WW	YW	MK	TM	CM	SC	DC	YG	CW	RE	MB	DMI	\$TPI	\$G	\$MPI	\$PI	
EPDS	16	-.9	65	103	28	61	9	.97	18	-.23	35	.73	.05	.5	108	.05	104	124
%	10	25	45	40	15	30	15	30	2	40	65	55	70	75	70	80	10	40

SYES Norway 334N is a stout, performance-oriented percentage bull that blends calving ease with practical growth and muscle. Sired by Lewis Gravity Flow G62 and backed by a productive cow family, he offers a balanced EPD profile with added carcass merit and maternal strength suited for both commercial and registered programs.

68

## SYES NASHIR 119N

BULL • PUREBRED(100/90) • HOMO POLLED (T) • RED  
04/02/2025 • NPM3442089 • SYES 119N

ANCHOR B GOLD RUSH 48G  
**JBV GOLDSTONE 306L**  
JBV GIRL CRUSH 422B

B BAR AUSTIN HEALY 4D ET  
ANCHOR B BAILEY 21B  
JBV EXPEDITION 205Z  
JBV BRITTANY 029X

LFLC EMPIRE 903E  
**MISS SYES EMPIRE 109G**  
MISS SYES CHECKING AC 110E

GREENWOOD CANADIAN MADE ET  
LFLC BABY GOT BACK 903B  
LFLC CHECKING ACCOUNT 701C  
MISS SYES FRIENDLY 106C

ACT BW  
80  
ADJ WW  
641

%GE-EPDs

CE	BW	WW	YW	MK	TM	CM	SC	DC	YG	CW	RE	MB	DMI	\$TPI	\$G	\$MPI	\$PI	
EPDS	17	-1.3	57	79	28	56	8	.8	10	-.62	8	1.33	-.44	-.79	74	.12	96	55
%	10	10	80	85	25	65	20	20	85	2	>95	10	>95	10	>95	20	30	95

SYES Nashir 119N is a calving-ease oriented purebred bull built on balance, soundness and maternal reliability, making him a strong option for use on heifers. Sired by JBV Goldstone 306L and out of a Checking Account-influenced cow, he offers a favorable BW profile with solid growth, a useful Milk number and carcass traits that add flexibility for both registered and commercial programs.

69

## JNTL NATTY 757N

BULL • PUREBRED(100/87.2) • HOMO POLLED (T) • HET BLACK (T)  
03/10/2025 • NPM3419785 • JNTL 757N

COLE BUSINESSMAN 104B  
**SYES EASY GOING 77E**  
MISS SYES RANSOM 76X

RICHMOND YOGI SRD 7Y  
COLE MISS PUREPOWER 809U  
WULFS RANSOM 3059R  
MISS SYES JUSTICE 476U

SYES JUNCTION 358J  
**MISS THAD 358J 761L**  
MISS TJ 760H

L7 GENUINE VISION 9033G  
MISS SYES WORKTIME 357C  
JYF EXTRA CHUNK 518E  
MISS THAD BICEP 759E

ACT BW  
86  
ADJ WW  
638

%GE-EPDs

CE	BW	WW	YW	MK	TM	CM	SC	DC	YG	CW	RE	MB	DMI	\$TPI	\$G	\$MPI	\$PI	
EPDS	7	1.8	74	116	24	61	7	.66	16	-.49	50	1.33	-.22	.09	141	.14	79	109
%	80	65	25	25	65	40	35	40	10	30	10	10	75	65	10	10	70	40

JNTL Natty 757N is a balanced, easy-fleshing purebred bull backed by generations of dependable SYES maternal genetics and anchored by the proven influence of SYES Easy Going 77E. He combines moderate birth, added performance and a strong carcass profile with excellent \$TPI and \$G rankings, making him a versatile option for programs focused on functional females and feeder-friendly calves.

# YEARLING BULLS



**TREF LONE RANGER 577L** • SIRE OF LOTS 70 & 72

70

## SYES NIALL 477N

BULL • PUREBRED(100/88.5) • HOMO POLLED (P-2) • RED  
04/03/2025 • NPM3459398 • SYES 477N

TREF EZ STREET 107E  
**TREF LONE RANGER 577L**  
TREF GEMMA 577G

ROMN CADILLAC JACK 101C  
**MISS SYES CADILLAC 478F**  
MISS SYES XANDER 476Z

WULFS CAPER 3303C  
TREF COCOA BEAN 107C  
COLE DAZZLE 74D  
TREF CASSIE 177C

WULFS APOSTLE T343A  
ROMN RITA 28R  
RICHMOND XANDER SRD 22X  
MISS SYES NIGHT OWL 472S

ACT BW  
84  
ADJ WW  
651

	CE	BW	WW	YW	MK	TM	CM	SC	DC	YG	CW	RE	MB	DMI	\$TPI	\$G	\$MPI	\$IPI
EPDS	12	.2	68	99	30	64	7	.75	10	-.52	40	1.38	-.27	-.21	127	.1	95	110
%	35	30	45	55	15	20	35	30	85	20	30	5	85	35	25	40	35	40

SYES Niall 477N is a stout, well-balanced purebred bull built on the predictable cow power of the TREF program, sired by the proven TREF Lone Ranger 577L. He combines moderate birth, solid growth and a strong carcass profile—ranking near the top of the breed for ribeye—making him a practical option for adding muscle, consistency and marketability without sacrificing maternal function.



**LOT 71**

71

## SYES NASH 402N

BULL • PUREBRED(93/84.2) • HOMO POLLED (T) • RED  
03/02/2025 • NPM3442231 • SYES 402N

WULFS GALLAGHER 7056G  
**WZRK JIMMY DEAN 9040J**  
WZRK 9040G

JYF EXTRA CHUNK 518E  
**MISS EX CHUNK 400L**  
MISS SYES EASY GOING 401H

WULFS XCELLSIOR X252X  
WULFS EDWINNA 7056E  
L7 EVERLAST 7007E  
WZRK ETTA 7061E

JYF CHUNK 35C  
TMF MISS T18W  
SYES EASY GOING 77E  
MISS SYES XCLUSIVE 401F

ACT BW  
68  
ADJ WW  
606

	CE	BW	WW	YW	MK	TM	CM	SC	DC	YG	CW	RE	MB	DMI	\$TPI	\$G	\$MPI	\$IPI
EPDS	15	-.2	62	90	26	56	7	.35	8	-.59	32	1.34	-.02	-.46	141	.12	94	147
%	15	5	65	70	40	65	35	80	90	5	55	10	25	20	10	20	35	10

SYES Nash 402N is a heifer-friendly purebred bull that blends proven calving ease with balanced, usable performance. Sired by WZRK Jimmy Dean 9040J and backed by the Extra Chunk and Easy Going cow lines, he offers a smooth birth profile, solid maternal strength and added carcass value—ranking near the top of the breed for \$TPI and \$IPI—making him a dependable option for long-term efficiency and profit.



**LOT 72**

72

## SYES NEBRASKA 909N

BULL • PUREBRED(100/87) • HOMO POLLED (P-2) • RED  
03/28/2025 • NPM3459404 • SYES 909N

TREF EZ STREET 107E  
**TREF LONE RANGER 577L**  
TREF GEMMA 577G

WULFS XCLUSIVE 2458X  
**MISS SYES XCLUSIVE 908F**  
MISS SYES 923U 907B

WULFS CAPER 3303C  
TREF COCOA BEAN 107C  
COLE DAZZLE 74D  
TREF CASSIE 177C

WZRK PRIMESTAR 861P  
WULFS MISSIVE 2258M  
MR SYES TRACKER 923U  
JBV CHEERLEADER 907W

ACT BW  
74  
ADJ WW  
613

	CE	BW	WW	YW	MK	TM	CM	SC	DC	YG	CW	RE	MB	DMI	\$TPI	\$G	\$MPI	\$IPI
EPDS	15	-.1	78	111	22	61	8	.45	19	-.52	32	1.19	-.14	0	118	.09	112	112
%	15	25	20	30	85	40	20	70	2	20	55	20	55	55	40	50	5	40

SYES Nebraska 909N is a heifer-friendly, purebred bull built on a reliable calving-ease foundation with added performance and carcass merit. Sired by TREF Lone Ranger 577L and backed by the Xclusive and Tracker cow families, he combines a balanced EPD profile with strong \$MPI and \$IPI rankings, offering a practical option for producers focused on calving ease, consistency and long-term profitability.

# YEARLING BULLS

73

## SYES NORFOLK 323N

BULL • PUREBRED(100/86.5) • HET POLLED (T) • BLACK  
04/20/2025 • NPM3442221 • SYES 323N

CELL ENVISION 7023E  
**RMKR HERCULES 020H**  
RMKR YASMINE 128Y

WULFS DEVILS LAKE K118D ET  
**MISS SYES DEVILS LAKE 328H**  
MISS SYES ZEEK 324C

AHCC BARN BURNER B907  
PBR5 ZSA ZSA 246Z  
GTBR UNDERTAKER 6U  
RMKR UNICORN 854U

WULFS BILLY THE KID K234B  
WULFS YOUR CHOICE 1419Y  
JYF ZEEK 151Z  
MISS SYES PLATINUM 121U

ACT BW  
80  
ADJ WW  
636

CE	BW	WW	YW	MK	TM	CM	SC	DC	YG	CW	RE	MB	DMI	\$TPI	\$G	\$MPI	\$IPI	
EPDS	8	.1	67	96	25	59	6	.75	16	-.52	41	1.27	-.17	.02	125	.06	76	99
%	75	30	50	60	50	55	30	10	20	30	10	65	60	30	90	80	50	50

SYES Norfolk 323N is a purebred, black bull offering a balanced blend of calving ease, structural integrity and dependable performance. Sired by RMKR Hercules 020H and out of a Devils Lake-influenced cow family, he brings a solid, usable EPD profile with added carcass value and consistency that fits commercial and seedstock programs alike.

74

## SYES NEVADA 316N

BULL • PUREBRED(93/84.3) • HOMO POLLED (P-3) • RED  
04/09/2025 • NPM3442218 • SYES 316N

WULFS GALLAGHER 7056G  
**WZRK JIMMY DEAN 9040J**  
WZRK 9040G

JYF EXTRA CHUNK 518E  
**MISS SYES EX CHUNK 319L**  
MISS SYES CH ACCOUNT 318H

WULFS XCELLSIOR X252X  
WULFS EDWINNA 7056E  
L7 EVERLAST 7007E  
WZRK ETTA 7061E

JYF CHUNK 35C  
TMF MISS 118W  
LFCL CHECKING ACCOUNT 701C  
MISS SYES CANYON 318F

ACT BW  
68  
ADJ WW  
612

CE	BW	WW	YW	MK	TM	CM	SC	DC	YG	CW	RE	MB	DMI	\$TPI	\$G	\$MPI	\$IPI	
EPDS	12	1.6	67	102	26	60	8	.35	9	-.51	32	1.08	-.07	-.07	119	.11	93	114
%	35	60	50	50	40	45	20	80	90	25	55	40	40	50	40	25	35	35

SYES Nevada 316N is a red, homozygous polled bull that combines structural correctness with a practical, balanced EPD profile. Sired by WZRK Jimmy Dean 9040J and backed by proven Wulfs and Extra Chunk maternal influence, he offers dependable growth, soundness and versatility for both commercial and registered operations.

75

## SYES NASHVILLE 584N

BULL • PUREBRED(90/81.2) • HOMO POLLED (T) • HET BLACK (T)  
04/06/2025 • NPM3442148 • SYES 584N

CELL ENVISION 7023E  
**L7 GENUINE VISION 9033G**  
MISS L7 567C

SYES EASY GOING 77E  
**MISS SYES E GOING 584J**  
MISS SYES XPRESSLANE 584A

AHCC BARN BURNER B907  
PBR5 ZSA ZSA 246Z  
L7 ALL THE ANSWERS 3056A  
MISS L7 323A

COLE BUSINESSMAN 104B  
MISS SYES RANSOM 76X  
ROMN XPRESS LANE 101X  
MISS SYES REVOLVER 384U

ACT BW  
90  
ADJ WW  
635

CE	BW	WW	YW	MK	TM	CM	SC	DC	YG	CW	RE	MB	DMI	\$TPI	\$G	\$MPI	\$IPI	
EPDS	8	1.3	53	86	23	50	7	1	20	-.42	25	1	-.03	-.14	97	.12	64	83
%	75	55	90	80	75	90	35	10	1	50	75	55	25	45	75	20	>95	70

SYES Nashville 584N is a homozygous polled bull that blends structural correctness with a moderate, usable performance profile. Sired by L7 Genuine Vision 9033G and backed by the proven SYES Easy Going cow family, he offers maternal strength, soundness and dependable functionality suited for a wide range of production environments.

76

## SYES NEW MOON 354N

BULL • PUREBRED(93/84.2) • SCURRED • RED  
03/16/2025 • NPM3442225 • SYES 354N

WULFS GALLAGHER 7056G  
**WZRK JIMMY DEAN 9040J**  
WZRK 9040G

JYF EXTRA CHUNK 518E  
**MISS SYES EX CHUNK 355L**  
MISS SYES EZ STREET 356H

WULFS XCELLSIOR X252X  
WULFS EDWINNA 7056E  
L7 EVERLAST 7007E  
WZRK ETTA 7061E

JYF CHUNK 35C  
TMF MISS 118W  
TREF EZ STREET 107E  
MISS SYES XCLUSIVE 357F

ACT BW  
80  
ADJ WW  
610

CE	BW	WW	YW	MK	TM	CM	SC	DC	YG	CW	RE	MB	DMI	\$TPI	\$G	\$MPI	\$IPI	
EPDS	16	-2.8	52	72	26	52	8	.4	12	-.47	23	1.13	.09	-.84	127	.1	91	152
%	10	2	90	95	40	85	20	70	70	35	80	30	10	5	25	40	10	4

SYES New Moon 354N is a calving-ease oriented bull that combines proven WZRK Jimmy Dean genetics with a strong, maternally driven dam line. With an actual BW of 80 and a CED of 16, he offers heifer-friendly calving ease while still maintaining balance, soundness and the kind of practical build that works in real-world cow herds.

77

## SYES NEWPORT 585N

BULL • PERCENTAGE(82/73.3) • HOMO POLLED (P-1) • HET BLACK (T)  
03/06/2025 • NXM3442241 • SYES 585N

AHCC EARNING POWER 900E ET  
**LEWIS GRAVITY FLOW 62Z**  
MISS WULFETTE 2285Z

SYES ENCORE 315E  
**MISS SYES ENCORE 584L**  
MISS SYES E GOING 584J

MAGS ANCHOR  
LVLS 9066U  
SA V PIONEER 7301  
WULFS UNEQUAL MATCH 8280U

LFCL CHECKING ACCOUNT 701C  
MISS SYES ROSCOE 316X  
SYES EASY GOING 77E  
MISS SYES XPRESSLANE 584A

ACT BW  
72  
ADJ WW  
628

CE	BW	WW	YW	MK	TM	CM	SC	DC	YG	CW	RE	MB	DMI	\$TPI	\$G	\$MPI	\$IPI	
EPDS	18	-2.1	68	103	25	58	10	1.05	19	-.33	23	.79	-.2	.25	82	.08	101	75
%	2	15	35	40	45	40	4	25	1	25	90	50	95	55	95	45	15	90

SYES Newport 585N is a heifer-safe, calving-ease bull built on a proven Earning Power x Gravity Flow pedigree that emphasizes maternal consistency and real-world functionality. With a light actual BW of 72, a strong CED of 18 and balanced growth numbers, he offers an excellent option for producers seeking calving ease without sacrificing structure, fleshing ability, or cow-making genetics.

78

## JNTL NORMAN 751N

BULL • PUREBRED(100/89.6) • HOMO POLLED (P-3) • HET BLACK (T)  
03/17/2025 • NPM3419784 • JNTL 751N

COLE BUSINESSMAN 104B  
**SYES EASY GOING 77E**  
MISS SYES RANSOM 76X

SYES ENCORE 315E  
**MISS THAD JZ AMAZING 750L**  
MISS SYES DEV LAKE 87J

RICHMOND YOGI SRD 7Y  
COLE MISS PUREPOWER 809U  
WULFS RANSOM 3059R  
MISS SYES JUSTICE 476U

LFCL CHECKING ACCOUNT 701C  
MISS SYES ROSCOE 316X  
WULFS DEVILS LAKE K118D ET  
MISS SYES FRIENDLY 87B

ACT BW  
72  
ADJ WW  
615

CE	BW	WW	YW	MK	TM	CM	SC	DC	YG	CW	RE	MB	DMI	\$TPI	\$G	\$MPI	\$IPI	
EPDS	21	-5	56	84	22	50	12	.5	18	-.62	9	1.25	-.29	-.49	86	.12	107	90
%	1	1	85	80	85	90	1	55	3	2	>95	15	90	20	90	20	10	60

JNTL Norman 751N is an elite heifer-safe option combining extreme calving ease with a deep, proven maternal pedigree. Posting a standout CED of 21 with an exceptional BW EPD of -5.0 and a light 72-lb actual birth weight, he is built for confidence on first-calf heifers while still offering balanced growth, excellent maternal traits and long-term cow power through his Easy Going and Businessman lineage.

# YEARLING BULLS

79

## SYES NEW BEAN 614N

BULL • PUREBRED(100/88.3) • HOMO POLLED (P-3) • RED  
04/24/2025 • NPM3442244 • SYES 614N

TREF EZ STREET 107E  
**TREF LONE RANGER 577L**  
TREF GEMMA 577G

WULFS CAPER 3303C  
TREF COCOA BEAN 107C  
COLE DAZZLE 74D  
TREF CASSIE 177C

JYF EXTRA CHUNK 518E  
**MISS BEANER EX CHUNK 613K**  
MISS BEANER CHECKING AC 612F

JYF CHUNK 35C  
TMF MISS 118W  
LFLC CHECKING ACCOUNT 701C  
MISS BEANER XCLUSIVE 611D **AGE-EPDs**  
ACT BW 80  
ADJ WW 663

CE	BW	WW	YW	MK	TM	CM	SC	DC	YG	CW	RE	MB	DMI	\$TPI	\$G	\$MPI	\$IPI
EPDS 14	-1.9	61	85	25	55	7	.62	10	-.51	37	1.27	-.18	-.51	134	.09	88	128
% 20	5	70	80	50	70	35	40	85	25	40	10	65	15	20	50	50	25

SYES New Bean 614N is a well-balanced, heifer-acceptable bull that blends calving ease, structural correctness and dependable maternal backing. With a strong CED of 14, a negative BW EPD of -1.9 and a proven TREF Lone Ranger × Extra Chunk pedigree, he offers a practical option for low-input programs seeking consistency, fertility and long-term cow longevity without sacrificing growth and carcass merit.

80

## SYES NICO 18N

BULL • PUREBRED(100/89.3) • HOMO POLLED (T) • HET BLACK (T)  
03/15/2025 • NPM3442170 • SYES 18N

RUNL RIALTO 135R  
**RUNL JUSTIFIED 364 J**  
RUNL EVENING GLOW 205 E

JCL LODESTAR 27L  
RUNL 782N  
AHCC BADLANDS 908B  
RUNL BLYSSE 106 B

SYES ENCORE 315E  
**MISS SYES ENCORE 16L**  
MISS SYES APOSTLE 14J

LFLC CHECKING ACCOUNT 701C  
MISS SYES ROSCOE 316X  
WULFS APOSTLE T343A  
MISS SYES CANYON 12F **AGE-EPDs**  
ACT BW 78  
ADJ WW 613

CE	BW	WW	YW	MK	TM	CM	SC	DC	YG	CW	RE	MB	DMI	\$TPI	\$G	\$MPI	\$IPI
EPDS 14	-2.4	67	100	23	56	9	.53	16	-.46	36	1.24	-.01	.27	123	.05	95	125
% 20	3	50	55	75	65	10	55	10	35	45	15	25	80	35	95	35	25

SYES Nico 18N is a heifer-friendly, homozygous polled bull that combines calving ease, maternal reliability and balanced performance. With a strong CED of 14, a negative BW EPD of -2.4 and a pedigree anchored by RUNL Justified and Encore influence, he offers an excellent option for building functional, moderate females while still maintaining growth, carcass balance and long-term herd value.

81

## SYES NELSON 105N

BULL • PUREBRED(100/86.5) • HOMO POLLED (P-2) • BLACK  
03/28/2025 • NPM3442086 • SYES 105N

WULFS ENDURANCE K069E ET  
**WULFS LONG HAUL K503L ET**  
WULFS CARRIEANN 5201C

WULFS BILLY THE KID K234B  
WULFS XUANA 0566X  
WULFS WILLARD 5115W  
WULFS YOU'RE MINE 1002Y

WULFS APOSTLE T343A  
**MISS SYES APOSTLE 105K**  
MISS SYES ANGEL 224A

WULFS YANKEE K689Y  
WULFS ULTRA DIAMOND 8571U  
ROMN WALK THE WALK 101W  
MISS SYES NIGHT OWL 100S **AGE-EPDs**  
ACT BW 88  
ADJ WW 608

CE	BW	WW	YW	MK	TM	CM	SC	DC	YG	CW	RE	MB	DMI	\$TPI	\$G	\$MPI	\$IPI
EPDS 4	4	73	100	25	61	2	1.02	10	-.57	25	1.34	-.15	.04	89	.03	76	55
% 95	95	30	55	50	40	>95	10	85	10	75	10	60	60	85	>95	80	95

SYES Nelson 105N is a long-bodied, purebred bull backed by the proven Wulfs Long Haul × Billy the Kid sire stack that has built a reputation for soundness and durability. He offers a moderate birth profile with solid growth and carcass merit, blending muscle, structure and maternal longevity—an excellent choice for producers looking to add consistency and functional power to their cow herd.

82

## SYES NOTRE DAME 89N

BULL • PUREBRED(100/88.7) • HOMO POLLED (P-2) • RED  
03/26/2025 • NPM3459386 • SYES 89N

TREF EZ STREET 107E  
**TREF LONE RANGER 577L**  
TREF GEMMA 577G

WULFS CAPER 3303C  
TREF COCOA BEAN 107C  
COLE DAZZLE 74D  
TREF CASSIE 177C

LFLC EMPIRE 903E  
**MISS SYES EMPIRE 89H**  
MISS SYES CANYON 81E

GREENWOOD CANADIAN MADE ET  
LFLC BABY GOT BACK 903B  
DLVL CANYON 546C  
MISS SYES NIGHT OWL 82T **AGE-EPDs**  
ACT BW 90  
ADJ WW 767

CE	BW	WW	YW	MK	TM	CM	SC	DC	YG	CW	RE	MB	DMI	\$TPI	\$G	\$MPI	\$IPI
EPDS 16	-.6	67	89	32	65	6	.78	3	-.55	22	1.18	-.35	-.43	95	.08	99	76
% 10	20	50	75	5	20	55	30	>95	15	80	20	95	20	75	65	25	80

SYES Notre Dame 89N is a stout, growth-oriented purebred bull backed by the proven TREF Lone Ranger × Wulfs Caper sire line that consistently adds muscle, performance and payweight. He posts an impressive WW ratio of 117 with added length and body, while maintaining a balanced calving profile and solid maternal support—an excellent option for operations wanting extra performance without sacrificing structure or longevity.

83

## SYES NAZIR 50N

BULL • PUREBRED(100/90.2) • HOMO POLLED (P-2) • RED  
04/08/2025 • NPM3442073 • SYES 50N

ANCHOR B GOLD RUSH 48G  
**JBV GOLDSTONE 306L**  
JBV GIRL CRUSH 422B

B BAR AUSTIN HEALY 4D ET  
ANCHOR B BAILEY 21B  
JBV EXPEDITION 205Z  
JBV BRITTANY 029X

TREF EZ STREET 107E  
**MISS SYES EZ STREET 49K**  
MISS SYES EARTHQUAKE 47H

WULFS CAPER 3303C  
TREF COCOA BEAN 107C  
SYES EARTHQUAKE 438E ET  
MISS SYES BERMUDA 547D **AGE-EPDs**  
ACT BW 96  
ADJ WW 597

CE	BW	WW	YW	MK	TM	CM	SC	DC	YG	CW	RE	MB	DMI	\$TPI	\$G	\$MPI	\$IPI
EPDS 4	2.2	67	96	26	59	3	.89	14	-.54	32	1.29	-.29	-.4	104	.1	62	57
% 95	70	50	60	40	50	95	20	45	15	55	10	90	20	65	40	>95	95

SYES Nazir 50N is a moderate, thick-made purebred bull built with balance, muscle and structural correctness. Sired by JBV Goldstone 306L and backed maternally by the proven TREF EZ Street line, he combines a low birth profile with solid performance, offering a functional option for breeders focused on efficiency, soundness and dependable cattle that work in real-world conditions.



**JBV GOLDSTONE 306L** • SIRE OF LOT 83

# YEARLING BULLS

84

## SYES NIKLAUS 213N

BULL • PUREBRED(100/89.3) • HOMO POLLED (T) • HET BLACK (T)  
03/10/2025 • NPM3442204 • SYES 213N

COLE BUSINESSMAN 104B  
**SYES EASY GOING 77E**  
MISS SYES RANSOM 76X

RICHMOND YOGI SRD 7Y  
COLE MISS PUREPOWER 809U  
WULFS RANSOM 3059R  
MISS SYES JUSTICE 476J

WULFS DEVILS LAKE K118D ET  
**MISS SYES DEVILS LAKE 213L**  
MISS SYES CH ACCOUNT 214H

WULFS BILLY THE KID K234B  
WULFS YOUR CHOICE 1419Y  
LFLC CHECKING ACCOUNT 701C  
MISS SYES BIRMINGHAM 214F

ACT BW  
90  
ADJ WW  
605

	CE	BW	WW	YW	MK	TM	CM	SC	DC	YG	CW	RE	MB	DMI	\$TPI	\$G	\$MPI	\$IPI
EPDS	10	2.3	70	106	24	58	8	.52	18	-.65	40	1.46	-.38	.02	124	.11	95	102
%	55	75	40	40	65	55	20	55	3	1	30	3	>95	60	30	25	35	50

SYES Niklaus 213N is a stout, big-hipped purebred bull that blends performance, carcass merit and maternal reliability. By SYES Easy Going 77E and out of a Devils Lake-influenced dam, he offers a balanced EPD profile with added growth and carcass value, making him a practical option for producers wanting power, consistency and long-term functionality in a polled, dark-colored package.



SYES EASY GOING 77E • SIRE OF LOT 84

85

## SYES NEO 161N

BULL • PUREBRED(93/83.9) • SCURRED • RED  
03/22/2025 • NPM3442193 • SYES 161N

WULFS GALLAGHER 7056G  
**WZRK JIMMY DEAN 9040J**  
WZRK 9040G

WULFS XCELLSIOR X252X  
WULFS EDWINNA 7056E  
L7 EVERLAST 7007E  
WZRK ETTA 7061E

ROMN WALK THE WALK 101W  
**MISS SYES WALK WALK 161L**  
MISS SYES DEEP & WIDE 161F

WULFS RIDGLEY 3172R  
ROMN TUTU 40T  
SYES DEEP AND WIDE 34D  
MISS SYES PLATINUM 167T

ACT BW  
72  
ADJ WW  
567

	CE	BW	WW	YW	MK	TM	CM	SC	DC	YG	CW	RE	MB	DMI	\$TPI	\$G	\$MPI	\$IPI
EPDS	15	-1.4	53	82	25	52	8	.46	14	-.52	33	1.21	-.03	-.48	136	.13	89	148
%	15	10	90	85	50	85	20	70	45	20	50	20	25	20	15	15	45	10

SYES Neo 161N is a heifer-approved, red purebred bull that offers calving ease with added shape and balance. Sired by WZRK Jimmy Dean 9040J and backed by a Deep & Wide-influenced dam, he combines a favorable birth-to-growth spread with solid maternal traits and extra muscle, making him a dependable option for producing functional, attractive calves with consistency and longevity in mind.

86

## SYES NESTOR 264N

BULL • PUREBRED(93/83.5) • HOMO POLLED (T) • BLACK  
04/09/2025 • NPM3442209 • SYES 264N

WULFS GALLAGHER 7056G  
**WZRK JIMMY DEAN 9040J**  
WZRK 9040G

WULFS XCELLSIOR X252X  
WULFS EDWINNA 7056E  
L7 EVERLAST 7007E  
WZRK ETTA 7061E

LFLC CHECKING ACCOUNT 701C  
**MISS SYES CHECK AC 265G**  
MISS SYES BUSINESSMAN 266E

WULF'S ZIPLOCK N922Z  
LFLC 701X XTRA GOOD  
COLE BUSINESSMAN 104B  
MISS SYES NIGHT OWL 263S

ACT BW  
86  
ADJ WW  
563

	CE	BW	WW	YW	MK	TM	CM	SC	DC	YG	CW	RE	MB	DMI	\$TPI	\$G	\$MPI	\$IPI
EPDS	14	-1.6	58	83	24	52	8	.35	8	-.59	21	1.02	.06	-.29	115	.07	93	125
%	20	10	80	80	65	85	20	80	90	5	85	50	15	30	45	80	35	25

SYES Nestor 264N is a heifer-approved, black purebred bull that blends calving ease with a smooth, balanced build and practical performance. Sired by WZRK Jimmy Dean 9040J and backed by a Checking Account-influenced dam line, he offers a favorable birth weight profile, solid growth numbers and maternal strength, making him a reliable choice for producing consistent, functional calves that work in both commercial and registered programs.

87

## SYES NORTH DAKOTA 555N

BULL • PUREBRED(93/81.8) • HOMO POLLED (P-3) • BLACK  
03/31/2025 • NPM3442239 • SYES 555N

WULFS GALLAGHER 7056G  
**WZRK JIMMY DEAN 9040J**  
WZRK 9040G

WULFS XCELLSIOR X252X  
WULFS EDWINNA 7056E  
L7 EVERLAST 7007E  
WZRK ETTA 7061E

COLE GENESIS 86G  
**MISS SYES GENESS 556L**  
MISS SYES YUNT TO 555B

HUNT CREDENTIALS 37C ET  
COLE MISS XRATED 354A  
ROMN YUNT TO 109Y  
MISS SYES TRUCK 653X

ACT BW  
74  
ADJ WW  
589

	CE	BW	WW	YW	MK	TM	CM	SC	DC	YG	CW	RE	MB	DMI	\$TPI	\$G	\$MPI	\$IPI
EPDS	17	-3	51	80	29	54	10	.28	12	-.44	20	.78	.06	-.75	118	.17	90	135
%	10	2	90	85	20	75	3	90	70	45	85	90	15	10	40	2	45	15

SYES North Dakota 555N is a heifer-safe, homo polled black bull that combines elite calving ease with a smooth, efficient build and maternal backing. Sired by WZRK Jimmy Dean 9040J and out of a Hunt Credentials-influenced cow family, he posts a standout low birth weight profile with solid growth, balanced EPDs and the kind of functional design that fits programs focused on easy-doing cattle, replacement females and long-term profitability.

**SO YOU CAN'T MAKE IT TO THE SALE IN PERSON? DON'T WORRY**

We have you covered!

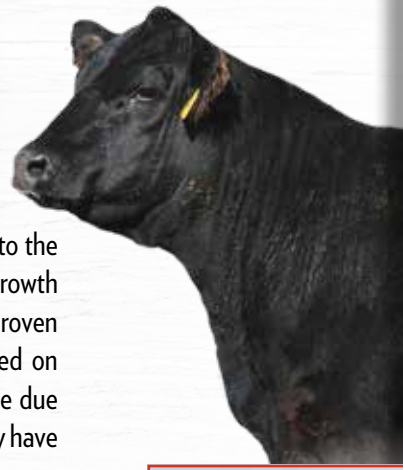
Watch and Bid Online at

**DVAuction**  
Broadcasting Real-Time Auctions

## BRED HEIFERS

Lots 88-97

The bred heifers presented here represent our 55-year long commitment to the Limousin breed and the producers who have come to rely on the muscle, growth and efficiency inherent to the Limousin breed. They sell bred to bulls proven for calving-ease as well as growth traits. The projected due dates are based on ultrasound pregnancy testing done in September. Those bred earliest will be due shortly after the sale and we will help arrange delivery as soon as possible. They have had two rounds of Scour Guard vaccinations for scour prevention. We encourage you to be prepared to take the females home early so they may acclimate to your environmental conditions prior to calving. If you take them home sale day we will credit you \$50 per head.



## OPEN HEIFERS

Lots 98-107

This top-notch set of yearling heifers was selected based on their conformation, pedigree history and EPDs in order to predict superior future production. Just as with their yearling bull contemporaries, since birth, these heifers have sorted themselves toward the top of their respective calf crop. In many instances, their genetic makeup is similar to the females we have chosen to retain in the herd to produce the next generation of SYES bulls and replacement females. We encourage you to take these females home early so they may adapt to your management style prior to showing or breeding. We'll begin making arrangements for delivery as soon as possible. If you take them home sale day we will credit you \$50 per head.



# BRED HEIFERS

88

## MISS SYES GEN VIS 302M

COW • PUREBRED(90/80.7) • HOMO POLLED (T) • RED  
03/23/2024 • NPF3125705 • SYES 302M

CELL ENVISION 7023E  
**L7 GENUINE VISION 9033G**  
MISS L7 567C

LFLC CHECKING ACCOUNT 701C  
**MISS SYES CH ACCOUNT 303J**  
MISS SYES BICEP 603G

AHCC BARN BURNER B907  
PBRS ZSA ZSA 246Z  
L7 ALL THE ANSWERS 3056A  
MISS L7 323A  
WULF'S ZIPLOCK N922Z  
LFLC 701X XTRA GOOD  
DLVL BICEP 491B  
MS BASY BERMUDA 604E

ACT BW  
82  
ADJ WW  
671  
ADJ YW  
1049

CE	BW	WW	YW	MK	TM	CM	SC	DC	YG	CW	RE	MB	DMI	\$TPI	\$G	\$MPI	\$IPI	
EPDS	3	3.2	75	119	30	67	1	.82	22	-.52	48	1.35	-.14	.49	128	.11	61	76
%	>95	85	25	20	15	10	>95	20	1	20	10	10	55	90	25	25	>95	80

**Ultrasound safe to DLVL Make Hay 485M. Due approximately 4/15/26.**

Miss SYES Gen Vis 302M is a powerful, purebred red cow that blends elite performance with a pedigree stacked with proven maternal and carcass influence. Sired by L7 Genuine Vision 9033G and backed by a strong Barn Burner × Checking Account cow family, she excels for growth and carcass merit while maintaining sound structure and functional design, making her a high-value female for programs focused on performance-driven, productive replacements.



L7 GENUINE VISION 9033G • SIRE OF LOT 88

89

## MISS SYES HERCULES 124M

COW • PUREBRED(100/85.9) • HOMO POLLED (T) • HOMO BLACK (P-3)  
04/12/2024 • NPF3125666 • SYES 124M

CELL ENVISION 7023E  
**RMKR HERCULES 020H**  
RMKR YASMINE 128Y

SYES ENCORE 315E  
**MISS SYES ENCORE 126J**  
MISS SYES YAHOO 226A

AHCC BARN BURNER B907  
PBRS ZSA ZSA 246Z  
GTBR UNDERTAKER 6U  
RMKR UNICORN 854U  
LFLC CHECKING ACCOUNT 701C  
MISS SYES ROSCOE 316X  
LFLC YAHOO  
MISS SYES 923U 216Y

ACT BW  
86  
ADJ WW  
626  
ADJ YW  
1017

CE	BW	WW	YW	MK	TM	CM	SC	DC	YG	CW	RE	MB	DMI	\$TPI	\$G	\$MPI	\$IPI	
EPDS	4	3.6	85	122	20	63	4	.78	14	-.49	35	1.12	-.12	.13	107	.09	77	61
%	95	90	4	15	95	30	85	30	45	30	45	30	50	70	60	50	75	90

**Ultrasound safe to DLVL Make Hay 485M. Due approximately 3/27/26.**

Miss SYES Hercules 124M is a double-homozygous, purebred black cow that combines elite growth, carcass merit and maternal consistency. Sired by RMKR Hercules 020H and out of a proven Encore × Checking Account cow family, she posts standout performance figures with added ribeye and carcass value, while maintaining a balanced, functional build that makes her a strong foundation female for progressive Limousin programs.



LOT 89

90

## MISS SYES JUSTIFIED 189M

COW • PUREBRED(100/89.4) • HOMO POLLED (P-1) • HET BLACK (T)  
03/14/2024 • NPF3125061 • SYES 189M

RUNL RIALTO 135R  
**RUNL JUSTIFIED 364 J**  
RUNL EVENING GLOW 205 E

SYES ENCORE 315E  
**MISS SYES ENCORE 185K**  
MISS SYES GV TIMER 85H

JCL LODESTAR 27L  
RUNL 782N  
AHCC BADLANDS 908B  
RUNL BLYSSE 106 B  
LFLC CHECKING ACCOUNT 701C  
MISS SYES ROSCOE 316X  
GV BIG TIMER 328E  
MISS SYES CANYON 80E

ACT BW  
68  
ADJ WW  
567  
ADJ YW  
877

CE	BW	WW	YW	MK	TM	CM	SC	DC	YG	CW	RE	MB	DMI	\$TPI	\$G	\$MPI	\$IPI	
EPDS	17	-.9	76	116	25	63	10	.44	17	-.48	48	1.41	-.22	.49	138	.06	117	135
%	10	15	20	25	50	30	3	70	5	30	10	4	75	90	15	90	2	15

**Ultrasound safe to Wulfs Hard To Forget 7109K. Due approximately 4/24/26.**

Miss SYES Justified 189M is a high-quality purebred female backed by elite calving ease, growth and maternal predictability. Sired by RUNL Justified 364J and from a productive Checking Account × Encore cow family, she offers a balanced EPD profile with strong CED, added carcass value and excellent dollar indexes, making her a versatile donor or foundation cow suited for both maternal-focused and performance-driven programs.



LOT 90

# BRED HEIFERS



LOT 91

91

## MISS SYES GENESIS 182M

COW • PUREBRED(93/83.3) • HOMO POLLED (P-3) • HET BLACK (T)  
03/25/2024 • NPF3125680 • SYES 182M

HUNT CREDENTIALS 37C ET  
**COLE GENESIS 86G**  
COLE MISS XRATED 354A

WULFS XCLUSIVE 2458X  
**MISS SYES XCLUSIVE 181H**  
MISS SYES FRIENDLY 581A

HUNT TESTAMENT 40T  
JKTW WHISKEY RIVER 985 W  
MRL X-RATED 014X  
COLE MISS PRODUCTION 874U

WZRK PRIMESTAR 861P  
WULFS MISSIVE 2258M  
SYES USER FRIENDLY 524U  
MISS SYES WAGONTRAIN 881Y

ACT BW  
84  
ADJ WW  
637  
ADJ YW  
987

	CE	BW	WW	YW	MK	TM	CM	SC	DC	YG	CW	RE	MB	DMI	\$TPI	\$G	\$MPI	\$IPI
EPDS	13	-2	68	104	26	60	6	.28	20	-.26	30	.66	.22	.22	112	.08	104	134
%	30	25	45	45	40	45	55	90	1	95	60	>95	2	75	50	65	15	15

**Ultrasound safe to DLVL Make Hay 485M. Due approximately 4/6/26.**

Miss SYES Genesis 182M is a powerful young purebred female blending proven maternal strength with modern performance, sired by COLE Genesis 86G and backed by a dependable Xclusive × User Friendly cow family. She offers a well-balanced EPD profile highlighted by strong growth, solid milk and elite dollar indexes, positioning her as a high-upside donor prospect or a cornerstone female for programs focused on longevity, functionality and genetic consistency.



COLE GENESIS 86G • SIRE OF LOTS 91 & 92

92

## MISS SYES GENESIS 287M

COW • PUREBRED(93/83.8) • HOMO POLLED (P-2) • HOMO BLACK (T)  
03/21/2024 • NPF3125704 • SYES 287M

HUNT CREDENTIALS 37C ET  
**COLE GENESIS 86G**  
COLE MISS XRATED 354A

LFLC CHECKING ACCOUNT 701C  
**MISS SYES CHECKING AC 288E**  
MISS SYES 464Z 289C

HUNT TESTAMENT 40T  
JKTW WHISKEY RIVER 985 W  
MRL X-RATED 014X  
COLE MISS PRODUCTION 874U

WULF'S ZIPLOCK N922Z  
LFLC 701X XTRA GOOD  
SYES XEROX 464Z  
MISS SYES FINAL TIME 290X

ACT BW  
78  
ADJ WW  
601  
ADJ YW  
968

	CE	BW	WW	YW	MK	TM	CM	SC	DC	YG	CW	RE	MB	DMI	\$TPI	\$G	\$MPI	\$IPI
EPDS	13	-.3	67	98	33	66	8	.38	9	-.39	20	.77	.05	.03	92	.07	96	92
%	30	25	50	55	3	15	20	80	90	60	85	90	15	60	80	80	30	60

**Ultrasound safe to Wulfs Holliday 2076M. Due approximately 4/23/26.**

Miss SYES Genesis 287M is a homozygous black, homozygous polled purebred female combining the proven consistency of COLE Genesis 86G with a strong Ziplock × Checking Account maternal base. She offers a balanced and functional EPD profile highlighted by maternal strength, solid growth and a top-tier TM rank, making her a dependable building block for programs focused on longevity, fertility and productive replacement females.



LOT 93

93

## MISS SYES EX CHUNK 178M

COW • PUREBRED(100/91) • HOMO POLLED (T) • RED  
04/04/2024 • NPF3125678 • SYES 178M

JYF CHUNK 35C  
**JYF EXTRA CHUNK 518E**  
TMF MISS 118W

SYES EASY GOING 77E  
**MISS SYES EASYGOING 478J**  
MISS SYES XANDER 476Z

WULFS ZEPHYR X624Z  
TMF MISS 186W  
TMF SUPERDUTY 516S  
TOP MEADOW 508S

COLE BUSINESSMAN 104B  
MISS SYES RANSOM 76X  
RICHMOND XANDER SRD 22X  
MISS SYES NIGHT OWL 472S

ACT BW  
82  
ADJ WW  
572  
ADJ YW  
843

	CE	BW	WW	YW	MK	TM	CM	SC	DC	YG	CW	RE	MB	DMI	\$TPI	\$G	\$MPI	\$IPI
EPDS	7	1.8	57	81	26	54	4	.58	0	-.57	14	1.1	-.35	-.5	72	.09	68	34
%	80	65	80	85	40	75	85	55	>95	10	95	35	95	15	>95	50	95	>95

**Ultrasound safe to Wulfs Hard To Forget 7109K. Due approximately 3/29/26.**

Miss SYES Ex Chunk 178M is a stout, homozygous polled purebred female built around the proven Extra Chunk × Easy Going × Ransom cow family that has consistently delivered muscle, soundness and productivity. She offers a practical, balanced EPD profile with solid maternal value, usable growth and the kind of structural integrity and fleshing ability that make cows easy to keep and profitable across a wide range of production environments.

# BRED HEIFERS

94

## MISS SYES EX CHUNK 323M

COW • PUREBRED(100/91) • HET POLLED (T) • RED  
04/07/2024 • NPF3125713 • SYES 323M

JYF CHUNK 35C  
**JYF EXTRA CHUNK 518E**  
TMF MISS 118W

WULFS DEVILS LAKE K118D ET  
**MISS SYES DEVILS LAKE 328H**  
MISS SYES ZEEK 324C

WULFS ZEPHYR X624Z  
TMF MISS 186W  
TMF SUPERDUTY 516S  
TOP MEADOW 508S  
WULFS BILLY THE KID K234B  
WULFS YOUR CHOICE 1419Y  
JYF ZEEK 151Z  
MISS SYES PLATINUM 121U **GE-EPDs**

ACT BW  
88  
ADJ WW  
596  
ADJ YW  
857

	CE	BW	WW	YW	MK	TM	CM	SC	DC	YG	CW	RE	MB	DMI	\$TPI	\$G	\$MPI	\$IPI
EPDS	8	3.3	60	84	27	57	5	.55	0	-.65	34	1.42	-.2	-.19	121	.04	75	99
%	75	90	75	80	30	60	70	55	>95	1	50	4	70	40	35	>95	80	50

**Ultrasound safe to Wulfs Hard To Forget 7109K. Due approximately 3/27/26.**

Miss SYES Ex Chunk 323M is a powerful, big-ribbed purebred female combining the Extra Chunk sire line with the proven Devil's Lake cow family, offering a blend of muscle, capacity and maternal strength. She posts strong performance ratios and a balanced EPD profile with added ribeye and carcass merit, making her the kind of cow that can add value both in the pasture and through the sale ring while maintaining long-term productivity.



**JYF EXTRA CHUNK 518E • SIRE OF LOTS 93, 94 & 95**

95

## MISS SYES EX CHUNK 335M

COW • PUREBRED(100/90.6) • HOMO POLLED (T) • RED  
04/07/2024 • NPF3125224 • SYES 335M

JYF CHUNK 35C  
**JYF EXTRA CHUNK 518E**  
TMF MISS 118W

GV BIG TIMER 328E  
**MISS SYES GV 334J**  
MISS SYES URBAN 332Z

WULFS ZEPHYR X624Z  
TMF MISS 186W  
TMF SUPERDUTY 516S  
TOP MEADOW 508S  
WULFS BIG TIMER 2004B  
GV MS BEEFMAKER PRIDE 575C  
WULFS URBAN COWBOY 2149U  
MISS SYES LADYS MAN 330S **GE-EPDs**

ACT BW  
86  
ADJ WW  
533  
ADJ YW  
824

	CE	BW	WW	YW	MK	TM	CM	SC	DC	YG	CW	RE	MB	DMI	\$TPI	\$G	\$MPI	\$IPI
EPDS	7	3.6	54	76	28	55	4	.58	2	-.71	14	1.27	-.22	-.39	85	.07	70	59
%	80	90	85	90	25	70	85	55	>95	1	95	10	75	25	90	80	90	95

**Ultrasound safe to Wulfs Hard To Forget 7109K. Due approximately 3/28/26.**

Miss SYES Ex Chunk 335M is a stout, easy-fleshing purebred female backed by the proven Extra Chunk sire line and the Big Timer cow family, offering added rib shape, body and maternal consistency. With a balanced performance profile, solid carcass merit and the kind of structural integrity that supports longevity, she's the type of cow built to work and add value across multiple mating options.

96

## MISS SYES HERCULES 185M

COW • PUREBRED(100/86.2) • HOMO POLLED (T) • HET BLACK (T)  
03/22/2024 • NPF3125682 • SYES 185M

CELL ENVISION 7023E  
**RMKR HERCULES 020H**  
RMKR YASMINE 128Y

GV BIG TIMER 328E  
**MISS SYES GV TIMER 85H**  
MISS SYES CANYON 80E

AHCC BARN BURNER B907  
PBRs ZSA ZSA 246Z  
GTBR UNDERTAKER 6U  
RMKR UNICORN 854U  
WULFS BIG TIMER 2004B  
GV MS BEEFMAKER PRIDE 575C  
DLVL CANYON 546C  
MISS SYES WALK 81Y **GE-EPDs**

ACT BW  
72  
ADJ WW  
584  
ADJ YW  
888

	CE	BW	WW	YW	MK	TM	CM	SC	DC	YG	CW	RE	MB	DMI	\$TPI	\$G	\$MPI	\$IPI
EPDS	13	-.2	62	91	26	57	7	.83	15	-.45	36	1.23	-.16	-.27	122	.1	92	121
%	30	25	65	70	40	60	35	20	20	40	45	15	60	30	35	40	40	30

**Ultrasound safe to Wulfs Holliday 2076M. Due approximately 4/4/26.**

Miss SYES Hercules 185M is a moderate, well-built purebred female that blends the power and look of the Hercules sire line with the proven durability of the Big Timer cow family. She offers a balanced EPD profile, solid carcass merit and a functional build that supports longevity, making her a dependable female with the kind of maternal strength and flexibility to fit a wide range of breeding programs.

97

## MISS SYES WALK 3M

COW • PUREBRED(100/87.9) • HOMO POLLED (P-1) • BLACK  
04/02/2024 • NPF3125213 • SYES 3M

WULFS RIDGLEY 3172R  
**ROMN WALK THE WALK 101W**  
ROMN TUTU 40T

WULFS URBAN COWBOY 2149U  
**MISS SYES URBAN 3B**  
MISS SYES WAGON TRAIN 2Y

COLE WULF HUNT  
WULFS NEGOTIABLE 3172N  
ROMN MADE TO ORDER  
ROMN LONNA 17L  
WULFS REALTOR 1503R  
WULFS MEADOW GRASS 2149M  
WULFS WAGON TRAIN 3197W  
GMLM MS LIL SISTER 302S **GE-EPDs**

ACT BW  
96  
ADJ WW  
651  
ADJ YW  
923

	CE	BW	WW	YW	MK	TM	CM	SC	DC	YG	CW	RE	MB	DMI	\$TPI	\$G	\$MPI	\$IPI
EPDS	9	2	56	80	27	55	5	.75	20	-.75	1	1.02	-.36	-.62	61	.1	78	29
%	65	65	85	85	30	70	70	30	1	1	>95	50	>95	10	>95	40	75	>95

**Ultrasound safe to Wulfs Hard To Forget 7109K. Due approximately 3/29/26.**

Miss SYES Walk 3M is a powerful, big-ribbed purebred female backed by generations of proven Walk the Walk and Wulfs cow families known for structural integrity and longevity. She combines real-world performance with excellent carcass merit and a strong maternal base, offering the kind of productivity, depth and durability that make elite brood cows in progressive Limousin programs.



**RMKR HERCULES 020H • SIRE OF LOT 96**

# OPEN HEIFERS



LOT 98



LOT 99

98

## MISS SYES JUSTIFIED 35N

COW • PUREBRED(100/89.4) • HOMO POLLED (T) • BLACK  
03/12/2025 • NPF3442175 • SYES 35N

RUNL RIALTO 135R  
**RUNL JUSTIFIED 364 J**  
RUNL EVENING GLOW 205 E

JCL LODESTAR 27L  
RUNL 782N  
AHCC BADLANDS 908B  
RUNL BLYSSE 106 B

SYES EASY GOING 77E  
**MISS SYES EASY GOING 25L**  
MISS SYES EX CHUNK 26J

COLE BUSINESSMAN 104B  
MISS SYES RANSOM 76X  
JYF EXTRA CHUNK 518E  
MISS SYES BACKSTAGE 824D

ACT BW  
84  
ADJ WW  
575

GE-EPDs

EPDS	CE	BW	WW	YW	MK	TM	CM	SC	DC	YG	CW	RE	MB	DMI	STPI	\$G	\$MPI	\$IPI
	11	1.1	81	125	23	63	6	.53	9	-.51	49	1.3	-.22	.28	140	.12	96	115
%	45	50	10	10	75	30	55	55	90	25	10	10	75	80	10	20	30	35

Miss SYES Justified 35N is a striking, ultra-feminine open heifer that combines style, balance and eye appeal with a pedigree built for long-term productivity. She's smooth made, clean fronted and attractive from the side, while still offering body depth and structural correctness that translate into a productive, problem-free brood cow. Backed by the Justified × Easy Going influence, this heifer offers a modern look with maternal strength—an ideal foundation female for programs that value both look and longevity.

99

## MISS SYES LONE RANGER 216N

COW • PUREBRED(100/88) • HET POLLED (T) • RED  
04/01/2025 • NPF3459392 • SYES 216N

TREF EZ STREET 107E  
**TREF LONE RANGER 577L**  
TREF GEMMA 577G

WULFS CAPER 3303C  
TREF COCOA BEAN 107C  
COLE DAZZLE 74D  
TREF CASSIE 177C

WULFS DEVILS LAKE K118D ET  
**MISS SYES DEVILS LAKE 216H**  
MISS SYES BUSINESSMAN 216D

WULFS BILLY THE KID K234B  
WULFS YOUR CHOICE 1419Y  
COLE BUSINESSMAN 104B  
MISS SYES NIGHTOWL 318W

ACT BW  
98  
ADJ WW  
668

GE-EPDs

EPDS	CE	BW	WW	YW	MK	TM	CM	SC	DC	YG	CW	RE	MB	DMI	STPI	\$G	\$MPI	\$IPI
	1	5.2	84	128	27	68	3	.86	18	-.55	60	1.63	-.3	.81	135	.05	66	70
%	>95	>95	5	10	30	10	95	20	3	15	1	1	90	>95	15	95	95	85

Miss SYES Lone Ranger 216N is a powerful yet beautifully feminine open heifer that blends elite growth with an attractive, modern silhouette. She's long necked, clean shouldered and elegant in her design, while still offering depth of rib, capacity and the kind of structural integrity that ensures longevity. With the Lone Ranger × Devils Lake influence stacked behind her, this red, high-performing heifer brings style, muscle and maternal strength together—an excellent choice for breeders wanting eye appeal today and production value for years to come.

# OPEN HEIFERS

100

## MISS SYES LONG HAUL 166N

COW • PUREBRED(100/86.6) • HOMO POLLED (T) • HOMO BLACK (T)  
04/01/2025 • NPF3442102 • SYES 166N

WULFS ENDURANCE K069E ET  
**WULFS LONG HAUL K503L ET**  
WULFS CARRIEANN 5201C

WULFS BILLY THE KID K234B  
WULFS XUANA 0566X  
WULFS WILLARD 5115W  
WULFS YOU'RE MINE 1002Y

SYES EASY GOING 77E  
**MISS SYES EASY GOING 166J**  
MISS SYES EARTHQUAKE 266G

COLE BUSINESSMAN 104B  
MISS SYES RANSOM 76X  
SYES EARTHQUAKE 438E ET  
MISS SYES NIGHT OWL 263S

ACT BW  
96  
ADJ WW  
617

**GE-EPDs**

	CE	BW	WW	YW	MK	TM	CM	SC	DC	YG	CW	RE	MB	DMI	\$TPI	\$G	\$MPI	\$IPI
EPDS	7	3.1	68	99	23	57	4	.7	14	-.48	21	1.11	-.24	-.37	84	.11	80	56
%	80	85	45	55	75	60	85	30	45	30	85	35	80	25	90	25	70	95

Miss SYES Long Haul 166N is a striking, ultra-feminine black heifer that combines elegance with real-world functionality. She is smooth made and long fronted with a refined head and neck, yet still offers body, depth and a strong topline that anchors her balanced design. Sired by Wulfs Long Haul and backed by the Easy Going cow family, 166N brings eye appeal, maternal predictability and a stylish look that fits both the pasture and the show ring—an easy kind to build a program around.



LOT 100

101

## MISS SYES HERCULES 212N

COW • PUREBRED(100/86.2) • HOMO POLLED (P-2) • BLACK  
04/15/2025 • NPF3442109 • SYES 212N

CELL ENVISION 7023E  
**RMKR HERCULES 020H**  
RMKR YASMINE 128Y

AHCC BARN BURNER B907  
PBRZ ZSA ZSA 246Z  
GTBR UNDERTAKER 6U  
RMKR UNICORN 854U

DLVL BICEP 491B  
**MISS SYES BICEP 312G**  
MISS SYES PETE 312E

TREF ZION 636X  
DLVL SKY 605S  
SYES BERMUDA 559B  
MISS SYES JOCK 311T

ACT BW  
76  
ADJ WW  
639

**GE-EPDs**

	CE	BW	WW	YW	MK	TM	CM	SC	DC	YG	CW	RE	MB	DMI	\$TPI	\$G	\$MPI	\$IPI
EPDS	12	-1.1	70	106	27	62	7	.7	17	-.39	36	1.13	-.22	.25	105	.08	83	76
%	35	15	40	40	30	35	35	30	5	60	45	30	75	75	60	65	60	80

Miss SYES Hercules 212N is a smooth-made, feminine black heifer that blends softness, balance and eye appeal with dependable maternal backing. She is long fronted and refined through her neck and shoulder, yet maintains depth of rib, body and a level topline that gives her a complete, stylish look. Sired by RMKR Hercules and supported by a productive cow family, 212N offers a very attractive phenotype with the kind of structure and design that translates into longevity and quality replacements.



LOT 101

102

## MISS SYES GRAVITY FLOW 258N

COW • PERCENTAGE(82/72.8) • HET POLLED (T) • RED  
03/16/2025 • NXF3442207 • SYES 258N

AHCC EARNING POWER 900E ET  
**LEWIS GRAVITY FLOW G62**  
MISS WULFETTE 2285Z

MAGS ANCHOR  
LVLS 9066U  
SA V PIONEER 7301  
WULFS UNEQUAL MATCH 8280U

WULFS DEVILS LAKE K118D ET  
**MISS SYES DEVILS LAKE 158L**  
MISS SYES EZ STREET 58H

WULFS BILLY THE KID K234B  
WULFS YOUR CHOICE 1419Y  
TREF EZ STREET 107E  
MISS SYES BUSINESSMAN 58F

ACT BW  
86  
ADJ WW  
601

**GE-EPDs**

	CE	BW	WW	YW	MK	TM	CM	SC	DC	YG	CW	RE	MB	DMI	\$TPI	\$G	\$MPI	\$IPI
EPDS	6	1.6	81	133	28	69	6	1.2	20	-.39	58	1.3	-.05	1.3	132	.05	78	96
%	95	75	10	10	15	10	65	10	1	15	15	4	80	>95	35	80	75	70

Miss SYES Gravity Flow 258N is a long-bodied, feminine red heifer with a clean front, attractive profile and the kind of softness and balance that catches your eye from the side. She is smooth through her shoulder, level topped and sound on her feet and legs, offering a very functional yet stylish look. Backed by the Lewis Gravity Flow sire group and a productive Devil's Lake-influenced dam, 258N combines visual appeal with maternal integrity, making her a strong candidate for a refined, good-uddered cow down the road.



LOT 102

# OPEN HEIFERS

103

## MISS SYES LONG HAUL 363N

COW • PUREBRED(100/86.7) • HOMO POLLED (T) • HOMO BLACK (T)  
04/07/2025 • NPF3442132 • SYES 363N

WULFS ENDURANCE K069E ET  
**WULFS LONG HAUL K503L ET**  
WULFS CARRIEANN 5201C

WULFS BILLY THE KID K234B  
WULFS XUANA 0566X  
WULFS WILLARD 5115W  
WULFS YOU'RE MINE 1002Y

LFLC ARBY 5027A  
**MISS SYES ARBY 363H**  
MISS SYES URBAN 362X

LFLC WINDFALL 56W  
HOEL RIGAMAROLE  
WULFS URBAN COWBOY 2149U  
MISS SYES NIGHT OWL 362T **#GE-EPDs**

ACT BW  
90  
ADJ WW  
611

	CE	BW	WW	YW	MK	TM	CM	SC	DC	YG	CW	RE	MB	DMI	\$TPI	\$G	\$MPI	\$IPI
EPDS	4	3.6	68	106	23	57	2	.72	11	-.42	27	.98	-.02	16	93	.08	74	71
%	95	90	45	40	75	60	>95	30	80	50	70	60	25	70	80	65	85	85

Miss SYES Long Haul 363N is an elegant, homo black, homo polled heifer that offers a sleek front end, feminine neck extension and a smooth, balanced build. She is long-sided and level in her design with a soft rib shape and clean lines, giving her a very eye-appealing, modern look. Sired by Wulfs Long Haul and backed by a proven, productive cow family, 363N blends style, soundness and maternal quality in a package built to mature into a reliable, attractive brood cow.

104

## MISS SYES LONG HAUL 336N

COW • PUREBRED(100/86.8) • HOMO POLLED (T) • HET BLACK (T)  
03/25/2025 • NPF3442129 • SYES 336N

WULFS ENDURANCE K069E ET  
**WULFS LONG HAUL K503L ET**  
WULFS CARRIEANN 5201C

WULFS BILLY THE KID K234B  
WULFS XUANA 0566X  
WULFS WILLARD 5115W  
WULFS YOU'RE MINE 1002Y

SYES EASY GOING 77E  
**MISS SYES EASY GOING 339K**  
MISS SYES EX CHUNK 338H

COLE BUSINESSMAN 104B  
MISS SYES RANSOM 76X  
JYF EXTRA CHUNK 518E  
MISS SYES CHECKING AC 338E **#GE-EPDs**

ACT BW  
74  
ADJ WW  
600

	CE	BW	WW	YW	MK	TM	CM	SC	DC	YG	CW	RE	MB	DMI	\$TPI	\$G	\$MPI	\$IPI
EPDS	8	.8	71	102	23	58	4	.7	12	-.52	28	1.26	-.14	18	105	.09	83	82
%	75	45	35	50	75	55	85	30	70	20	65	15	55	40	60	50	65	70

Miss SYES Long Haul 336N is a refined, feminine heifer that stands out for her balance, symmetry and overall softness of design. She is smooth-fronted and clean-made with a graceful neck, level topline and a well-shaped rib that gives her an attractive, stylish profile from the side. Sired by Wulfs Long Haul and backed by a dependable maternal lineage, 336N combines eye appeal with sound structure and the kind of functional design that translates into longevity and productivity as a brood cow.

105

## MISS SYES GOLDSTONE 157N

COW • PUREBRED(93/84.8) • HOMO POLLED (T) • RED  
04/03/2025 • NPF3442100 • SYES 157N

ANCHOR B GOLD RUSH 48G  
**JBV GOLDSTONE 306L**  
JBV GIRL CRUSH 422B

B BAR AUSTIN HEALY 4D ET  
ANCHOR B BAILEY 21B  
JBV EXPEDITION 205Z  
JBV BRITTANY 029X

WULFS GALLAGHER 7056G  
**MISS SYES GALLAGHER 156K**  
MISS SYES EASY GOING 56H

WULFS XCELLSIOR X252X  
WULFS EDWINNA 7056E  
SYES EASY GOING 77E  
MISS SYES YUNT TO 56B **#GE-EPDs**

ACT BW  
90  
ADJ WW  
608

	CE	BW	WW	YW	MK	TM	CM	SC	DC	YG	CW	RE	MB	DMI	\$TPI	\$G	\$MPI	\$IPI
EPDS	8	1.7	72	108	28	64	6	.8	16	-.35	35	.88	.05	116	.09	90	110	
%	75	60	35	35	25	20	55	20	10	75	45	80	15	60	45	50	45	40

Miss SYES Goldstone 157N is an elegant, feminine-made heifer that offers an attractive blend of eye appeal and structural correctness. She is smooth through her front end, clean at the shoulder and carries herself with a stylish, balanced look that reads quality from every angle. By JBV Goldstone and out of a proven Wulfs Xcellsior daughter, 157N brings together refinement, soundness and maternal strength—making her the kind of young female that fits seamlessly into progressive breeding programs focused on both look and longevity.



**JBV GOLDSTONE 306L • SIRE OF LOT 105**

106

## MISS SYES JIMMY DEAN 371N

COW • PUREBRED(93/81.4) • HOMO POLLED (P-3) • RED  
04/10/2025 • NPF3442229 • SYES 371N

WULFS GALLAGHER 7056G  
**WZRK JIMMY DEAN 9040J**  
WZRK 9040G

WULFS XCELLSIOR X252X  
WULFS EDWINNA 7056E  
L7 EVERLAST 7007E  
WZRK ETTA 7061E

COLE GENESIS 86G  
**MISS SYES GENESIS 371L**  
MISS SYES TRAIL 372B

HUNT CREDENTIALS 37C ET  
COLE MISS XRATED 354A  
WULFS YUKON TRAIL 8084Y  
MISS SYES FINAL TIME 371W **#GE-EPDs**

ACT BW  
66  
ADJ WW  
615

	CE	BW	WW	YW	MK	TM	CM	SC	DC	YG	CW	RE	MB	DMI	\$TPI	\$G	\$MPI	\$IPI
EPDS	16	-1.6	60	94	32	62	9	.19	20	-.49	12	.98	.1	23	97	.13	104	112
%	10	10	75	65	5	35	10	95	1	30	>95	60	10	35	75	15	15	40

Miss SYES Jimmy Dean 371N is a refined, feminine heifer that stands out for her balance, smoothness and overall style. She is neat-fronted with a soft, attractive look, plenty of rib shape and a level, correct design that makes her easy on the eye. Sired by WZRK Jimmy Dean 9040J and backed by the proven COLE Genesis cow family, 371N combines eye appeal with maternal reliability, offering the kind of functional elegance that transitions seamlessly from the show ring look to real-world production.

107

## MISS SYES LONE RANGER 41N

COW • PUREBRED(100/87.7) • HOMO POLLED (T) • RED  
04/12/2025 • NPF3442070 • SYES 41N

TREF EZ STREET 107E  
**TREF LONE RANGER 577L**  
TREF GEMMA 577G

WULFS CAPER 3303C  
TREF COCOA BEAN 107C  
COLE DAZZLE 74D  
TREF CASSIE 177C

WULFS DEVILS LAKE K118D ET  
**MISS SYES DEVILS LAKE 41K**  
MISS SYES ARBY 41G

WULFS BILLY THE KID K234B  
WULFS YOUR CHOICE 1419Y  
LFLC ARBY 5027A  
MISS SYES 116T 42X **#GE-EPDs**

ACT BW  
84  
ADJ WW  
614

	CE	BW	WW	YW	MK	TM	CM	SC	DC	YG	CW	RE	MB	DMI	\$TPI	\$G	\$MPI	\$IPI
EPDS	9	1.1	73	107	27	63	5	.78	16	-.53	45	1.47	-.25	26	125	.05	87	97
%	65	50	30	40	30	30	70	30	10	15	20	3	85	80	30	95	50	55

Miss SYES Lone Ranger 41N is an ultra-feminine, eye-catching heifer with a sleek front end, graceful neck extension and a smooth, balanced profile. She combines softness and rib shape with a level topline and sound structure, giving her the kind of stylish look that still reads functional. Backed by the TREF Lone Ranger and Devils Lake influence, 41N is the type of attractive young female that brings both visual appeal and maternal substance to a program.

# REFERENCE SIRES

	CE	BW	WW	YW	MK	TM	CM	SC	DC	YG	CW	RE	MB	DMI	\$TPI	\$G	\$MPI	\$IPI
<b>CELL LARAMIE 3129L ET</b> AUTO LUCKY GUY 140D ET x TASF GUARDIAN ANGEL 300G • PUREBRED(89/78.8) • Het Polled (T) • Homo Black (T) • NPM2797942	4	4.1	75	112	23	60	2	0.56	0	-0.3	30	0.67	-0.08	0.26	84	0.08	68	43
<b>COLE EARNING POWER 86K</b> COLE EARNING POWER 82H x COLE MISS CURTAIN CALL 046H • PUREBRED(95/79.4) • Homo Polled (P-2) • Homo Black (T) • NPM2508855	18	-2.4	61	103	25	56	11	1.2	13	-0.18	41	0.58	0.16	-0.15	142	0.17	94	163
<b>COLE GENESIS 86G</b> HUNT CREDENTIALS 37C ET x COLE MISS XRATED 354A • PUREBRED(87/77.3) • Homo Polled (P-1) • Black • NPM2174722	15	-1.3	67	102	38	71	11	0.4	12	-0.07	40	0.56	0.39	0.17	134	0.08	100	163
<b>DLVL MAKE HAY 485M</b> TOMV HARRY 031H x DLVL MISS BRANCH 053H • PUREBRED(100/89.1) • Homo Polled (T) • Red • NPM3125995	22	-3.2	45	57	20	42	12	0.5	13	-0.38	20	0.75	-0.14	-0.99	112	0.06	122	167
<b>JBV GOLDSTONE 306L</b> ANCHOR B GOLD RUSH 48G x JBV GIRL CRUSH 422B • PUREBRED(100/90.5) • Homo Polled (P-1) • Red • NPM2605811	5	3.7	78	119	30	69	5	1.1	12	-0.55	40	1.5	-0.26	-0.06	119	0.14	69	61
<b>L7 GENUINE VISION 9033G</b> CELL ENVISION 7023E x MISS L7 567C • PERCENTAGE(81/72.1) • Homo Polled (T) • Het Black (T) • NXM2168402	0	4.7	78	129	24	63	0	1.5	25	-0.38	35	1.17	0.04	0.64	95	0.15	54	41
<b>LEWIS GRAVITY FLOW G62</b> AHCC EARNING POWER 900E ET x MISS WULFETTE 2285Z • LIM-FLEX(65/56.3) • Homo Polled (T) • Het Black (T) • LFM2174828	18	-1.6	74	126	28	65	10	1.7	20	-0.08	52	0.71	0.21	1.14	133	0.09	107	153
<b>RMKR HERCULES 020H</b> CELL ENVISION 7023E x RMKR YASMINE 128Y • PUREBRED(93/82.5) • Homo Polled (T) • Homo Black (T) • NPM2291176	4	3.8	96	147	22	70	4	1.2	14	-0.38	58	1.31	-0.3	0.71	127	0.12	75	57
<b>RUNL JUSTIFIED 364 J</b> RUNL RIALTO 135R x RUNL EVENING GLOW 205 E • PUREBRED(100/88.7) • Homo Polled (T) • Homo Black (T) • NPM2393495	13	-0.4	89	138	25	69	8	0.5	16	-0.38	56	1.12	0.05	0.96	150	0.06	109	143
<b>SYES EASY GOING 77E</b> COLE BUSINESSMAN 104B x MISS SYES RANSOM 76X • PUREBRED(100/89.1) • Homo Polled (P-2) • Black • NPM2122675	19	-4.1	58	88	23	52	11	0.6	17	-0.51	22	1.16	-0.38	-0.42	97	0.12	110	101
<b>SYES HARDROCK 65H</b> WULFS DEVILS LAKE K118D ET x MISS SYES WORKTIME 66B • PUREBRED(100/87.8) • Homo Polled (T) • Red • NPM2276675	15	1.1	78	127	28	67	8	0.4	15	-0.52	49	1.5	0	0.97	143	0.08	102	131
<b>SYES JOHN DOE 123J</b> SYES EASY GOING 77E x MISS DOUBLE AGENT 103G • PUREBRED(100/89) • Homo Polled (T) • Red • NPM2378359	22	-4.5	58	84	24	54	9	0.4	18	-0.6	19	1.24	-0.39	-0.44	100	0.09	114	102
<b>SYES KNOCKOUT 23K</b> SYES EASY GOING 77E x MISS SYES BACKSTAGE 32H • PUREBRED(100/89.5) • Homo Polled (T) • Het Black (T) • NPM2508422	10	1	77	118	22	61	7	1	14	-0.51	32	1.3	-0.34	0.31	94	0.1	88	52
<b>TREF LONE RANGER 577L</b> TREF EZ STREET 107E x TREF GEMMA 577G • PUREBRED(94/86.3) • Homo Polled (P-1) • Red • NPM2567145	10	0.3	86	122	28	71	7	0.85	16	-0.48	56	1.51	-0.28	0.32	145	0.07	93	108
<b>WULFS HARD TO FORGET 7109K</b> WZRK HARD TO FORGET 1040H x WULFS ELEANORE 7109E • PUREBRED(87/77.2) • Homo Polled (T) • Black • NPM2522182	14	-2.4	67	100	29	63	7	0.7	8	-0.39	18	0.83	-0.22	-0.2	80	0.13	94	62
<b>WULFS HOLLIDAY 2076M</b> WULFS HOLLIDAY 4841H x WULFS KALICO 2076K • PUREBRED(87/77.6) • Homo Polled (P-1) • Red • NPM3124346	17	-3.4	65	94	30	62	10	0.3	18	-0.35	22	0.9	0.05	-0.37	108	0.11	99	117
<b>WULFS KACTUS 4841K</b> WULFS HORTON 7358H x WULFS BESAME MUCHO 4841B • PUREBRED(100/88.4) • Homo Polled (T) • Red • NPM2509653	-4	8.3	108	166	29	83	-2	1.4	14	-0.38	54	1.06	-0.04	1.28	114	0.08	53	21
<b>WULFS LONG HAUL K503L ET</b> WULFS ENDURANCE K069E ET x WULFS CARRIEANN 5201C • PUREBRED(93/83.8) • Homo Polled (T) • Homo Black (P-1) • NPM2567821	1	5.8	87	126	21	65	1	0.8	11	-0.36	40	1.18	0.03	0.3	110	0.06	70	71
<b>WZRK JIMMY DEAN 9040J</b> WULFS GALLAGHER 7056G x WZRK 9040G • PUREBRED(87/78.1) • Homo Polled (P-2) • Red • NPM2431023	18	-3.8	62	96	29	60	11	0.1	21	-0.46	28	1.05	0.12	-0.42	134	0.15	111	162



**SYES EASY GOING 77E**



**SYES HARDROCK 65H**



**SYES JOHN DOE 123J**

# NOTES

Think Limousin. Think L365.



**24/7/365**

Real-time. Industry Relevant.



*The Site That Never Sleeps*

405.260.3775 • [www.limousin365.com](http://www.limousin365.com) • Like us on 

# AVERAGES

LOTS	TOTAL	AVERAGE
_____ Yearling Bulls	_____	_____
_____ Bred Heifers	_____	_____
_____ Open Heifers	_____	_____
_____ TOTAL LOTS	_____	_____



# Thank You

## FOR ATTENDING THE

### 46<sup>th</sup> Symens Brothers

# MUSCLE UP

## for Profit Sale

We look forward to seeing you at our next sale.

**Symens Brothers**  
**SYES** Your Guarantee of Predictable Genetics



Marketing Management

2005 Ruhl Drive  
Guthrie, OK 73044



**46<sup>th</sup>** *Symens Brothers*  
**MUSCLE UP**  
*for Profit*  
*Sale*

**FEBRUARY 26, 2026 • 1 PM**  
At The Farm • Amherst, SD

**Selling 87 Bulls & 20 Females**

