



MAGNESS BEEF BULLS

FRONT RANGE
ANNUAL BULL SALE



SATURDAY, APRIL 1, 2023
1 P.M. MDT • PLATTEVILLE, COLORADO



FRONT RANGE ANNUAL BULL SALE

SATURDAY, APRIL 1, 2023

1 P.M. MDT • PLATTEVILLE, COLORADO

SELLING 66 HEAD

Limousin & Lim-Flex (Angus Hybrid)

Registered Spring Yearling Bulls

SALE-DAY PHONES

| | |
|-------------------------|--------------|
| John Pence..... | 970-396-3584 |
| Austin Gottschalk | 970-396-0115 |
| Kiley McKinna | 402-350-3447 |

AUCTIONEER

| | |
|----------------------|--------------|
| Ronn Cunningham..... | 918-629-9382 |
|----------------------|--------------|

LIVESTOCK REPRESENTATIVES

| | |
|--|--------------|
| Alan Sears, <i>Western Ag Reporter</i> | 970-396-7521 |
| Jim Gies, <i>Western Livestock Journal</i> | 970-590-0500 |

SALE MANAGEMENT



MC MARKETING MANAGEMENT

| | |
|--------------------|--------------|
| Kiley McKinna..... | 402-350-3447 |
| Wiley Fanta..... | 320-267-0751 |

ONLINE BIDDING PROVIDER



BID.SUPERIORLIVESTOCK.COM
800-422-2117

TERMS & CONDITIONS

Terms are cash or check. Cattle sell under the standard terms and conditions recommended by the North American Limousin Foundation.

HERD HEALTH

All bulls will be accompanied with proper health certificates for immediate shipment to most locations in the United States. All cattle have been tested for: Arthrogyrosis Multiplex (AM), Neuropathic Hydrocephalus Free (NH), Homozygous Polled and Black, and have had passed breeding soundness exams. All bulls are virgins, have been Trich tested and PAP scored at 4,809 ft.

VACCINATION PROGRAM

All bulls selling have been vaccinated/poured with Ivomec, Spirovac VL5, Titanium 5, TSV-2, Vision 7 Somnus with SPUR.

SUPPLEMENTAL INFORMATION

A supplement sheet with additional information will be available sale day and online at magnesscattle.com

ANNOUNCEMENTS

Announcements made sale day and from the auction block during the sale take precedence over printed material in the catalog or other printed material associated with the sale.

INSURANCE

Insurance available sale day. Inquire at clerk's desk.

TRUCKING

Truckers will be available to assist you in shipping your purchase. We generally offer complimentary delivery to central points, such as Springfield, MO; Oklahoma City, OK; Kansas City, MO; and Omaha, NE. Contact a Magness representative for details.

EPDs

Current as of 3-1-23



Platteville, Colorado

GARY MAGNESS, OWNER

John Pence, 970-396-3584

Austin Gottschalk, 970-396-0115

View Sale Videos Online At
www.magnesscattle.com

PROGRESSIVE CATTLEMEN,

We cordially welcome you to the Magness Land & Cattle Front Range Bull Sale April 1, 2023, at the ranch near Platteville, Colorado. The bulls selling are mostly Spring Yearlings that have ultrasound data, are semen tested, PAP scores and ready to go to work. Genetically, this outstanding set of bulls on offer represent our nearly 40 year commitment to breeding Limousin and Lim-Flex cattle. Furthermore, this offering of bulls has been developed at an honest rate of feed consumption with longevity in mind and sorted based on calving-ease, elevation adaptability and structural integrity designed to handle various terrains.

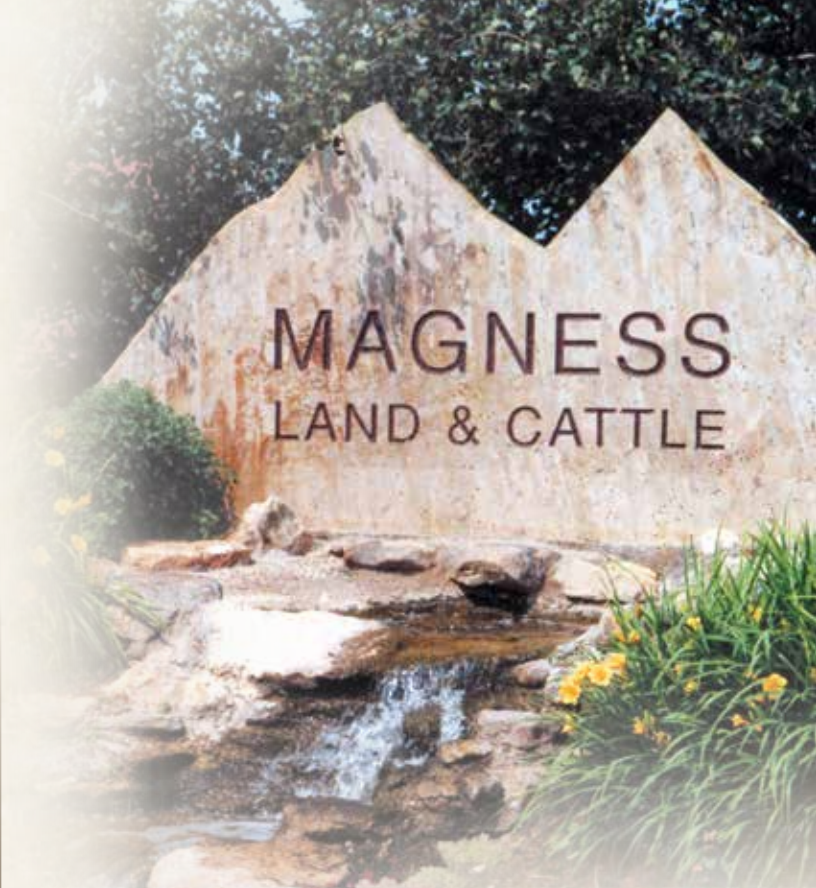
Of the many factors that affect the bottom line in this business, the bull power we use in our breeding programs is the one factor we have the most control over, particularly in the commercial cow-calf segment of our industry. To that end, in this catalog, you will find EPD profiles that reflect the very best Limousin and Lim-Flex genetics available in the country. Furthermore, you will find PAP scores, ultrasound data and performance data including actual birth weight, adjusted weaning weight, adjusted yearling weight, adjusted scrotal circumference, ribeye area and percent IMF. When you analyze the bulls phenotypically, you will find the bulls to be docile, structurally correct, muscular and easy fleshing. In addition, you can add the inherent value of heterosis to the performance of your calf crop.

The beef cattle industry has experienced a dramatic drop in cow numbers which is equating to higher prices being paid and as such the premium placed on genetically superior calves is also at an all-time high. The bulls that can sire market-topping calves are available in this sale as indicated by their visual traits and outstanding genetic profiles.

Once again we are offering a 5% discount with the purchase of 5-9 bulls and a 10% discount with the purchase of 10 bulls or more. Buyers also have the option to put one-third down sale day with the balance due October 15, 2023, for any bulls purchased in this sale. As always, we fully and unconditionally guarantee the bulls to be breeders for the first breeding season as it relates to fertility. Please study our extended bull warranty program that covers not only fertility issues but, also injury, loss of use or death (find further details on page 3).

We look forward to your attendance. Plan to join us for lunch, and should you have any questions don't hesitate to call Austin Gottschalk, John Pence, Kiley McKinna or other members of the sale staff listed in the catalog.

Sincerely,
Gary Magness



SALE SCHEDULE

Friday, March 31, 2023

Sale preview all afternoon

Saturday, April 1, 2023

8:00 AM Viewing Begins

Noon Complimentary Lunch

1:00 PM MDT **MAGNESS LAND & CATTLE
FRONT RANGE BULL SALE**

DIRECTIONS

Magness Land & Cattle

12284 Weld County Rd. 24 1/2, Ft. Lupton, CO, 80621

From I-25, take the Longmont, CO, exit onto Hwy. 66. Follow Hwy. 66 east until you come to a stop light at the intersection of Hwy. 85. Turn right (south) onto Hwy. 85 and follow for about 2 miles to Weld County Road 24 1/2 and turn right. Follow WCR 24 1/2 west until you see the Magness Land & Cattle sign. At the sign, turn right and continue to facility.

AIRPORTS & DRIVE TIMES

Denver International Airport is approximately 40 miles from the ranch.

ACCOMMODATIONS

Holiday Inn Express & Suites 720-680-2500
11256 Business Park Circle, Firestone, CO, 80504

Best Western Firestone Inn & Suites720-494-1925
11228 Business Park Circle, Firestone, CO, 80504

Hampton Inn-Brighton..... 303-654-8055
992 Platte River Blvd., Brighton, CO 80601

THE MAGS PROGRAM

**YOU'RE NOT JUST BUYING A BULL.
YOU'RE BUYING INTO AN INDUSTRY-LEADING PROGRAM.**

0% FINANCING

Pay 1/3 of purchase price at the sale. Balance is due October 15, 2023.

VOLUME PURCHASE PROGRAM

Buy in bulk and receive a discount.

Buy 5-9 bulls and receive a 5% discount. Buy 10 or more bulls and receive a 10% discount.

GUARANTEED SIGHT-UNSEEN PURCHASE PROGRAM

Our sight-unseen program is simple. If you can't attend, call Kiley McKinna, 402-350-3447, or John Pence, 970-396-3584, and give them your specifications and budget. We will provide you with a list of bulls we feel will meet your needs. If the bulls don't meet your specifications at delivery, you don't own them. We guarantee your bids will be confidential and your purchases will be executed at the lowest bid possible.

BREED-LEADING, PREDICTABLE GENETICS

We have spent nearly 40 years creating predictable, time-tested genetics with the combination of balanced EPDs and off-the-charts performance data. Our cattle perform on paper and in the pasture.

Limousin and Lim-Flex (Angus Hybrid) cattle deliver to your bottom line. With superior genetics, a simple crossbreeding plan and state-of-the-art selection tools, Limousin and Lim-Flex (Angus Hybrid) serve profit-minded cow/calf producers.

Using Limousin and Lim-Flex makes economic sense. Heterosis and breed complementarity are powerful forces that combine to produce the biggest advantage of beef cattle crossbreeding. This crossbred advantage can amount to as much as 25% greater lifetime productivity for crossbred cows as compared to straightbred cows.

At Magness Cattle, we offer a variety of genetic options to match your program's needs and market goals. Crossbreeding for the right blend of muscle, maternal ability and profit is easy with Limousin seedstock from Magness Land & Cattle.

With nearly 40 years experience in the Limousin seedstock industry and 70 years in the commercial cattle business, Magness understands what it takes to be successful and we strive to assure the same success is enjoyed by our customers.

SPRING YEARLING BULLS

Being one of the largest suppliers of Lim-Flex bulls in the nation is a job we take seriously. Given the volume of bulls we sell and the variety of customers we must service, we work diligently to provide a unique cross-section of bulls both from a parentage standpoint, as well as from an end product standpoint. Needless to say, we are extremely proud of the bulls brought forth to you this year for your appraisal. We truly feel there is something for everyone whether it be calving-ease, high marbling, impressive growth, altitude tested or combination bulls that do many things very well. As customers, we value your comments and suggestions on how we can provide you an even better product in the future.



BULL WARRANTY PROGRAM

In an effort to protect, simplify and enhance your MAGS bull purchasing experience, we offer an extended herd bull warranty program, which reaches beyond our unconditional one-breeding season guarantee.

Magness Land & Cattle guarantees to sell a bull that is sound and has passed a semen test by an accredited veterinarian. Should any bull purchased through the Magness Land & Cattle bull sale fail to be a satisfactory breeder or be unable to physically service a cow or heifer, he will be replaced with a bull of equal value. Should this not be possible, we will issue a credit toward the purchase of another bull. We will not however provide warranty for mismanagement.

While under our warranty, the bull is covered for injury, sickness or death. We will service your needs with a replacement bull or sale credit. Should you have any problems with a bull, please contact John Pence and he will work with you to make sure your cows get bred and you are a satisfied customer. We do have back up bulls set aside, which will be the first resolution to any warranty issues. The Warranty Program is designed to protect your purchase during the most high risk time of a bull's life.

WARRANTY COVERAGE

We offer the following options which are required to be paid on the day of the sale. It is the buyer's responsibility to purchase at the settlement desk.

| PLAN | DURATION | RATE |
|------|-----------|----------------------|
| #1 | 6 months | 3% of Purchase Price |
| #2 | 12 months | 6% of Purchase Price |

PLAN 1 6 months • 3% of Purchase Price

This plan covers the bull through the spring breeding season and is 100% of the purchase price less the salvage value when applicable.

PLAN 2 12 months • 6% of Purchase Price

This plan covers the bull for a full year which will include two breeding seasons (spring and fall) and one wintering period. In Plan #2, the warranty covers 85% of the purchase price less the salvage value when applicable.

Exclusion to Warranty:

Any injury or death due to malicious, willful or intentional acts or mistreatment are considered fraudulent claims.

Should an issue arise with your bull, please notify Magness Land & Cattle immediately by phone 970-785-6170 or 970-396-3584. You will also need to contact a licensed veterinarian to diagnose and treat the animal and fill out a vet form. If the animal dies, a post mortem will be required.

Note: All buyers that opt to utilize the Magness Land & Cattle financing program will be automatically charged the Plan #1 6-month bull warranty on their invoice. This is designed to protect both the buyer and seller.



OUR BULLS

PERFORM AT THE HIGHEST LEVELS

PAP TESTING

Cattlemen running cattle at elevations above 5,000 feet are inherently aware of a condition known as Brisket Disease. Brisket Disease, also known as High Mountain Disease or Dropsy, is one of the Rocky Mountain Region's most costly diseases with instances of up to 30% death loss. Brisket Disease can be associated with abortions, dead calves at birth, peewee calves at weaning, and the most commonly distinguished symptom, retained fluid in the chest area and eventually death.

Cattle differ in how they respond to the availability of oxygen associated with a raise in elevation. In order to handle the lack of oxygen, cattle respond by constricting vessels to push blood through more area of the lung to gather more oxygen. This in turn causes the walls of the arteries in the lungs to thicken. This causes the heart to pump harder in order to get enough blood through the thickened arteries. If these conditions become too acute, the heart will actually pump hard enough to push fluid through the walls of the pulmonary artery and blood vessels. This fluid is what causes the swelling of the chest in cattle with Brisket Disease.

Research has shown the thickening of the walls of the arteries, which causes Brisket Disease, to be highly heritable. This means it can be controlled with proper genetic management. There are two ways to stop susceptibility to Brisket. The first is natural selection. When cattle are ran at higher elevations for extended periods of time the disease will take it's toll. Cattle exhibiting signs of Brisket will be culled due to the poor performance associated with the disease.

The second method used to control Brisket Disease is Pulmonary Arterial Pressures (PAP) testing. PAP scores are obtained by a procedure called "right heart/pulmonary artery catheterization". A true average pressure is measured in millimeters of mercury (mmHg).

Using natural selection in your cow herd to eliminate cattle susceptible in your herd and requiring all new genetics (your bulls) to be properly PAP tested is a very effective way to control Brisket Disease.

PAP testing is a tool, that when used correctly, can increase the overall performance of cattle run at higher elevations. Given it's importance to profitability for ranchers who run their cattle at altitude, Magness Land & Cattle is providing PAP scores on all bulls selling. Bulls were also trichomoniasis tested and can go anywhere in the United States. What's more, every bull was fertility tested and sells fully guaranteed as outlined on Page 3.

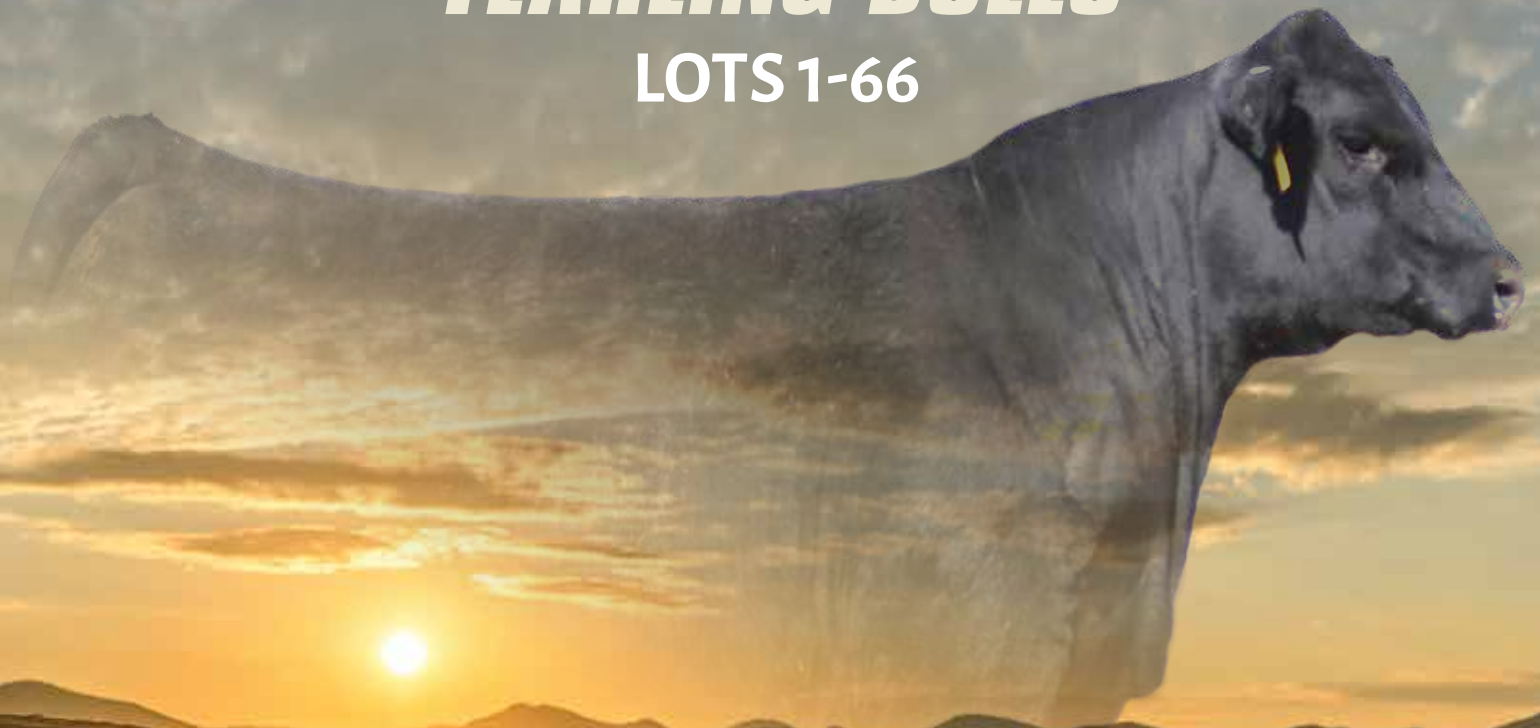
Note: PAP scores were recorded by Dr. Tim Holt at Colorado State University





YEARLING BULLS

LOTS 1-66



INDUSTRY BUILT & CUSTOMER TESTED

These yearling bulls are a direct reflection of our commitment to raising production cattle. Our production philosophy is simple - we aim to create a product that's reproductively sound, easy calving, high performing and mainstream acceptable. It's our goal that this group of yearling bulls on offer, which feature only the best in Lim-Flex genetics, will translate not only into your program seamlessly, but the results of their breeding will also meet your customers' targets.

SPRING YEARLING BULL



LOT 1



AHCC EASY RIDER 5594E

Sire of Lot 1

LOT **1**

MAGS KING OF THE HILL 524K

1/25/2022 | LIM-FLEX(54/48.4) | MAGS 524K | HOMO BLK (P-3) | HOMO PLD (P-2) | LFM2518979

PAP | 41

Act. BW | 70
Adj. WW | 792
Adj. YW | 1343
Adj. REA | 16.24
Adj. IMF | 3.135
Act. SC | 40.9

ELMW ALFALFA 103B
AHCC EASY RIDER 5594E
AHCC MISS Y AXIS C5594 ET

MAGS CABLE COWBOY
MAGS HAY SHED 778H
PBRS 691D ET

TMCK ALFALFA 35X
ELMW WAIT-A-BIT 4W
MAGS Y-AXIS
AHCC DAKOTA LUVLY R595
MAGS YIP
LHT MS THUNDER 36X
MAGS AVIATOR
AUTO AJAY 206A

| | CE | BW | WW | YW | MK | CM | SC | DC | YG | CW | RE | MB | \$MI |
|----------|----|-----|----|-----|----|----|----|----|------|----|-----|-----|------|
| GED EPDs | 11 | -.3 | 84 | 135 | 28 | 8 | .8 | 10 | -.16 | 45 | .89 | .35 | 70 |
| % RANK | 50 | 25 | 10 | 10 | 4 | 20 | 60 | 85 | 55 | 20 | 25 | 20 | 10 |

What an exceptional way to lead off this impressive offering! MAGS King Of The Hill 524K combines a notable pedigree, a balanced EPD profile and eye-catching phenotype. He is sired by the proven AHCC Easy Rider 5594E, who has sired many elite progeny all over the country admired by many great cattlemen. His dam is MAGS Hay Shed 778H, who goes back to the great MAGS Cable Cowboy. On paper, he ranks in the top 10% for both weaning weight and yearling weight, top 4% for milk, top 20% for marbling, top 25% ribeye area and top 10% for mainstream terminal index. Aside from his numerical advantages, phenotypically, he is heavily structured, big bodied, level topped, with extra muscle expression and free moving off both ends of his skeleton. This homozygous polled, homozygous black herd sire is going to do big things for the winning bidder. Make that be you.

SPRING YEARLING BULL



LOT 2

LOT 2 **MAGS KENTUCKY BOURBON 1234K ET**

1/20/2022 | LIM-FLEX(46/41.4) | MAGS1234K | HOMO BLK (P-1) | HOMO PLD (P-2) | LFM2519188

PAP | 93

Act. BW | 79
Adj. WW | 723
Adj. YW | 1071
Adj. REA | 12.34
Adj. IMF | 3.850
Act. SC | 37.2

AHCC DAKOTA THUNDER 363D
MAGS GOOD WILL 130G
CYWD ZAYLEE 6Z

PBRS BUNK HOUSE 48B
MAGS EADIE
PBRS CLASSEN ET

AHCC ANGUS VALLEY 911B
AHCC MISS ROBIN A363
CONNEALY THUNDER
CYWD XOXOX 12X
MAGS YIP
LBAF SHAWNEE 602
EXAR CLASSEN 1422B
WLR RENDEZVOUS 050R

| | CE | BW | WW | YW | MK | CM | SC | DC | YG | CW | RE | MB | \$MI |
|----------|-----|-----|----|-----|----|----|----|----|------|----|-----|-----|------|
| GED EPDs | 5 | 2.1 | 74 | 111 | 20 | 4 | .8 | 12 | -.15 | 44 | .68 | .37 | 67 |
| % RANK | >95 | 80 | 40 | 50 | 60 | 90 | 70 | 65 | 60 | 25 | 55 | 20 | 20 |

This herd sire prospect brings the pounds and performance. Here is a big, stout, wide-made, ruggedly designed Lim-Flex that comes to us in a heavyweight, homozygous polled, homozygous black package. He is sired by MAGS Good Will 130G, the young, AHCC Dakota Thunder 363D son that sires fast growing, high performing progeny. His dam is a beautifully made PBRS Bunk House 48B daughter. On paper, MAGS Kentucky Bourbon ranks in the top 50% for weaning weight and yearling weight. He recorded a 723 lb. 205-day-weight. He has the data and pedigree to do big things for your operation.



MAGS GOOD WILL 130G
Sire of Lot 2

SPRING YEARLING BULL



LOT 3

LOT 3

MAGS KOOPER RUSH 2622K ET

2/15/2022 | LIM-FLEX(54/49) | MAGS 2622K | DBL BLK | HOMO PLD (P-2) | LFM2519036

PAP | 38

Act. BW | 81
Adj. WW | 845
Adj. YW | 1412
Adj. REA | 14.46
Adj. IMF | 4.650
Act. SC | 41.4

MAGS CABLE
MAGS FEDERAL RESERVE ET
CJSL 4357B ET

MAGS WINSTON
MAGS DARE TO LOVE ME ET
MAGS XTRA REST

MAGS APPLESEED
MAGS ZEQUIN
S A V HESSTON 2217
AHCC XHIBIT THIS X045
BT CROSSOVER 758N
MAGS STRAWBERRY
DHVO DEUCE 132R
MAGS UNREST

| | CE | BW | WW | YW | MK | CM | SC | DC | YG | CW | RE | MB | \$MI |
|----------|----|-----|----|-----|----|----|----|----|------|----|-----|-----|------|
| GED EPDs | 14 | -.3 | 80 | 130 | 17 | 8 | .8 | 15 | -.01 | 38 | .46 | .57 | 75 |
| % RANK | 15 | 25 | 20 | 15 | 85 | 20 | 70 | 25 | 90 | 40 | 85 | 3 | 2 |

Here is an impressive MAGS Federal Reserve son that checks all the boxes. Heavily muscled, rugged, big bodied and sound on the move. His dam is a highly productive MAGS Winston daughter. Numerically, he has a well-balanced EPD profile, he ranks in the top 20% for both weaning and yearling weight, top 3% for marbling and top 2% mainstream terminal index. What's more, he is homozygous polled. Bid with confidence, this herd sire prospect will have a tremendous impact on your cow herd.



MAGS FEDERAL RESERVE ET

Sire of Lot 3



LOT 4

LOT
4

MAGS JOHNNY WALKER RED 912J

9/11/2021 | LIM-FLEX(62/56.1) | MAGS 912J | RED | HOMO PLD (P-1) | LFM2508912

PAP | 40

Act. BW | 65
Adj. WW | 509
Adj. YW | 1016
Act. REA | 16.10
Act. IMF | 3.63
Act. SC | 35.1

SBLX FIRST CLASS
PBRS ENCORE 7195E ET
EF ZYNGA 356Z

MAGS YIP
MAGS BALLOON ET
PBRS0111X

DAMERON FIRST CLASS
MAGS MANUELA
TC TOTAL 410
MAGS PRETTY CHRISTINE
MAGS THE GENERAL
AUTO CARMINDA 656S
S A V BISMARCK 5682
MAGS NEW GAMES 169N

| | CE | BW | WW | YW | MK | CM | SC | DC | YG | CW | RE | MB | \$MI |
|----------|----|------|----|----|----|----|----|----|----|----|----|-----|------|
| GED EPDs | 11 | -1.8 | 56 | 91 | 15 | 7 | 1 | 12 | -2 | 29 | .6 | .44 | 65 |
| % RANK | 50 | 10 | 95 | 90 | 95 | 35 | 35 | 65 | 45 | 70 | 65 | 10 | 30 |

This powerfully built, red herd sire prospect has an alluring phenotype. He is stout featured, wide based and brings added growth, muscle expression and performance. His sire is the popular PBRS Encore 7195E ET, proven to sire heavily muscled, sound, high performing progeny everywhere he has been used. His dam is a highly productive MAGS Yip daughter. This fresh pedigreed individual will be a great addition to your herd bull pen.



PBRS ENCORE 7195E ET

Sire of Lot 4

SPRING YEARLING BULL



LOT 5

LOT **5**

MAGS KNOCKED OUT 2608K ET

2/6/2022 | LIM-FLEX(53/47.3) | MAGS 2608K | HOMO BLK (P-2) | HOMO PLD (P-3) | LFM2519004

PAP | 48

Act. BW | 81
Adj. WW | 762
Adj. YW | 1341
Adj. REA | 15.18
Adj. IMF | 2.195
Act. SC | 40.0

MAGS APPLESEED
MAGS CABLE
MAGS ZEQUIN

MAGS ZODIAC
MAGS DROP THE COOKIE
MAGS ANDREA

RITO 6EM3 OF 4L1 EMBLAZON
MAGS WAY TO SHINE
BOHI TOP DOLLAR 7144T
WERNER RITA 118
MAGS WINSTON
MAGS XANTHOUS
LH RODEMASTER 338R
AUTO COOKIE CUTTER 295R

| | CE | BW | WW | YW | MK | CM | SC | DC | YG | CW | RE | MB | \$MI |
|----------|----|-----|----|-----|----|----|-----|----|-----|----|-----|-----|------|
| GED EPDs | 10 | 1.1 | 80 | 125 | 25 | 6 | 1.1 | 18 | .01 | 47 | .46 | .32 | 66 |
| % RANK | 65 | 55 | 20 | 20 | 15 | 55 | 35 | 3 | 95 | 15 | 85 | 25 | 25 |

Study this attractively made, homozygous polled, homozygous black herd sire prospect that combines softness, athleticism and muscle expression. He is a son of popular MAGS Cable who has produced numerous great ones. His dam is a tremendous MAGS Zodiac daughter that is beautifully designed and functionally correct. Numerically, MAGS Knocked Out 2608K ranks in the top 20% for weaning weight, top 20% for yearling weight, top 3% for docility and top 25% for marbling. His calves will be a hot commodity.



MAGS CABLE
Sire of Lot 5

SPRING YEARLING BULLS



LOT 6



LOT 7

LOT 6

MAGS KING SNAKE 1218K ET

1/11/2022 | LIM-FLEX(51/46.3) | MAGS1218K | HOMO BLK (T) | HOMO PLD (P-1) | LFM2518955

| | | |
|------------------|---------------------|---------------------------|
| PAP 39 | MAGS AVIATOR | MAGS WINSTON |
| Act. BW 77 | CJSL CREED 5042C | MAGS XTRA REST |
| Adj. WW 648 | CJSL 2090Z | MAGS XUKALANI |
| Adj. YW 1219 | | MAGS XULEMA |
| Adj. REA 17.26 | EXAR UPSHOT 0562B | SITZ UPWARD 307R |
| Adj. IMF 2.995 | MAGS BLUE RIBBON ET | EXAR BARBARA T020 |
| Act. SC 40.7 | WLR ELIXER | MAGSWL USUAL SUSPECT 538U |
| | | EXLR LUANA 505P |

| | CE | BW | WW | YW | MK | CM | SC | DC | YG | CW | RE | MB | \$MI |
|----------|----|----|----|-----|----|----|-----|----|------|----|-----|-----|------|
| GED EPDs | 10 | 0 | 66 | 113 | 20 | 7 | .2 | 9 | -.06 | 32 | .71 | .38 | 64 |
| % RANK | 65 | 30 | 70 | 45 | 60 | 35 | >95 | 95 | 80 | 60 | 50 | 15 | 30 |

This herd sire prospect will be a crowd favorite on sale day. Long sided, easy fleshing, big bodied, level topped and docile. This bull will add pounds to his calf crop. On paper, he resides in the top 15% marbling and top 30% mainstream terminal index. He is sired by the heavily used CJSL Creed 5042C, who stamps his progeny with an attractive phenotype and structural correctness. His dam is a daughter of EXAR Upshot 0562B, a popular Angus AI sire. Don't miss this homozygous polled, homozygous black, 51% Lim-Flex bull.

LOT 7

MAGS KAN YOU SAY IT 1225K ET

1/16/2022 | LIM-FLEX(50/44.9) | MAGS1225K | HOMO BLK (P-1) | HOMO PLD (P-2) | LFM2519169

| | | |
|------------------|-------------------------|-----------------------|
| PAP 37 | MAGS CABLE | MAGS APPLESEED |
| Act. BW 95 | MAGS FEDERAL RESERVE ET | MAGS ZEQUIN |
| Adj. WW 719 | CJSL 4357B ET | S A V HESSTON 2217 |
| Adj. YW 1289 | | AHCC XHIBIT THIS X045 |
| Adj. REA 11.56 | PBRs BUNK HOUSE 48B | MAGS YIP |
| Adj. IMF 3.700 | MAGS EADIE | LBAF SHAWNEE 602 |
| Act. SC 40.0 | PBRs CLASSEN ET | EXAR CLASSEN 1422B |
| | | WLR RENDEZVOUS 050R |

| | CE | BW | WW | YW | MK | CM | SC | DC | YG | CW | RE | MB | \$MI |
|----------|-----|-----|----|-----|----|----|----|----|------|----|-----|-----|------|
| GED EPDs | 5 | 5 | 89 | 137 | 20 | 3 | 1 | 13 | -.07 | 59 | .71 | .43 | 73 |
| % RANK | >95 | >95 | 4 | 10 | 60 | 95 | 35 | 50 | 80 | 3 | 50 | 10 | 4 |

If you like good-footed, long-bodied, deep-sided, functionally correct cattle that are double homozygous, then watch for this exceptional son of MAGS Federal Reserve whose progeny sort to the top of any list. His dam, MAGS Eadie, needs little introduction to these feature lots with multiple full and half brothers represented. Numerically, he ranks in the top 10% for both weaning weight and yearling weight, 10% for marbling and top 4% mainstream terminal index. This herd sire is going to do big things for the winning bidder. Make that be you.

SPRING YEARLING BULLS



LOT 8



LOT 9

LOT 8

MAGS KA-BOOM 1233K ET

1/20/2022 | LIM-FLEX(68/61.3) | MAGS 1233K | HOMO BLK (P-2) | HOMO PLD (P-3) | LFM2518968

PAP | 41

Act. BW | 77
Adj. WW | 710
Adj. YW | 1215
Adj. REA | 13.04
Adj. IMF | 3.270
Act. SC | 36.2

MAGS XYLOID
ELCX KINGS LANDING 599 D ET
WLR PRADA

MAGS ZODIAC
MAGS DROP THE COOKIE
MAGS ANDREA

DHVO DEUCE 132R
BOHI RHONDA 314R
MAGSWL USUAL SUSPECT 538U
AUTO REBECA 292S
MAGS WINSTON
MAGS XANTHOUS
LH RODEMASTER 338R
AUTO COOKIE CUTTER 295R

| | CE | BW | WW | YW | MK | CM | SC | DC | YG | CW | RE | MB | \$MI |
|----------|----|-----|----|-----|----|----|----|----|------|----|-----|-----|------|
| GED EPDs | 11 | 3.2 | 73 | 117 | 25 | 5 | .6 | 14 | -.15 | 40 | .64 | .06 | 56 |
| % RANK | 50 | 95 | 45 | 35 | 15 | 75 | 80 | 35 | 60 | 35 | 60 | 75 | 75 |

Here is a herd sire prospect with a flashy phenotype, who is great fronted, long bodied, deep sided, with extra dimension and bone. He is a son of the popular ELCX Kings Landing who has been proven to produce progeny with complete phenotypes and added value. His dam is a highly productive MAGS Zodiac daughter. He is hard to find a hole in, bid with confidence sale day.

LOT 9

MAGS KAFFIR BEER 1239K ET

1/29/2022 | LIM-FLEX(53/47.4) | MAGS 1239K | HET BLK (T) | HOMO PLD (T) | LFM2519192

PAP | 45

Act. BW | 83
Adj. WW | 749
Adj. YW | 1342
Adj. REA | 14.72
Adj. IMF | 4.105
Act. SC | 38.6

MAGS APPLE JACK
MAGS FIRESTONE 218F
MAGS DAYSTAR

MAGS Y-AXIS
MAGS AMAZON
ENGD RIVER WILD 1066Y

MAGS XUKALANI
WLR UGLY BETTY 432U
MAGS ZODIAC
MAGS ACTION MOVE
TC ABERDEEN 759
MAGS UAHUKA
G A R PREDESTINED
MAGS RIVER WILD

| | CE | BW | WW | YW | MK | CM | SC | DC | YG | CW | RE | MB | \$MI |
|----------|----|-----|----|-----|----|----|----|----|------|----|-----|-----|------|
| GED EPDs | 10 | 2.7 | 76 | 122 | 19 | 6 | 1 | 9 | -.18 | 28 | .43 | .19 | 61 |
| % RANK | 65 | 90 | 30 | 25 | 70 | 55 | 45 | 95 | 50 | 75 | 90 | 50 | 45 |

This herd sire prospect will add performance, docility, and carcass advantages to any herd he is applied to. His sire, MAGS Firestone 218F, was the 2019 NWSS Grand Champion Limousin Bull who is now siring standout progeny across the country. Firestone progeny have tremendous base width, center capacity, and muscle expression. On paper, he ranks in the top 30% for weaning weight, top 25% yearling weight, top 45% scrotal and mainstream terminal index. With his stacked pedigree, impressive EPD profile and big data this bull will produce high-dollar calves with extra carcass merit.

SPRING YEARLING BULLS



LOT 10



LOT 11

LOT 10

MAGS KYTO 1240K ET

1/31/2022 | LIM-FLEX(53/47.5) | MAGS 1240K | HOMO BLK (P-2) | HOMO PLD (P-3) | LFM2518991

PAP | 46

Act. BW | 80
Adj. WW | 654
Adj. YW | 1236
Adj. REA | 15.16
Adj. IMF | 3.325
Act. SC | 38.7

MAGS CABLE
MAGS FEDERAL RESERVE ET
CJSL 4357B ET

MAGS ZODIAC
MAGS DROP THE COOKIE
MAGS ANDREA

MAGS APPLSEED
MAGS ZEQUIN
S A V HESSTON 2217
AHCC XHIBIT THIS X045
MAGS WINSTON
MAGS XANTHOUS
LH RODEMASTER 338R
AUTO COOKIE CUTTER 295R

| | CE | BW | WW | YW | MK | CM | SC | DC | YG | CW | RE | MB | \$MI |
|----------|----|-----|----|-----|----|----|-----|----|-----|----|-----|-----|------|
| GED EPDs | 16 | -.9 | 62 | 106 | 23 | 8 | 1.1 | 15 | .02 | 33 | .35 | .45 | 65 |
| % RANK | 4 | 15 | 85 | 60 | 30 | 20 | 30 | 25 | 95 | 60 | 95 | 10 | 25 |

This calving-ease herd sire prospect is an absolute eye catcher. Smoothly patterned, long bodied, wide based and truly impressive when set into motion. He is a son of MAGS Federal Reserve whose progeny sort to the top of any list. On paper, he comes with a moderate birth weight figure of -0.9 and ranks in the top 4% for calving ease direct. Also, take note of his breed-leading marbling. This homozygous polled, homozygous black herd sire prospect is going to do big things for the winning bidder. Make that be you.

LOT 11

MAGS KNARLY 1235K ET

1/22/2022 | LIM-FLEX(68/61.3) | MAGS 1235K | HOMO BLK (P-2) | HOMO PLD (P-3) | LFM2518969

PAP | 40

Act. BW | 81
Adj. WW | 706
Adj. YW | 1246
Adj. REA | 13.48
Adj. IMF | 2.180
Act. SC | 37.3

MAGS XYLOID
ELCX KINGS LANDING 599 D ET
WLR PRADA

MAGS ZODIAC
MAGS DROP THE COOKIE
MAGS ANDREA

DHVO DEUCE 132R
BOHI RHONDA 314R
MAGSWL USUAL SUSPECT 538U
AUTO REBECA 292S
MAGS WINSTON
MAGS XANTHOUS
LH RODEMASTER 338R
AUTO COOKIE CUTTER 295R

| | CE | BW | WW | YW | MK | CM | SC | DC | YG | CW | RE | MB | \$MI |
|----------|----|-----|----|----|----|----|----|----|------|----|-----|-----|------|
| GED EPDs | 8 | 1.2 | 63 | 99 | 25 | 4 | .6 | 14 | -.15 | 36 | .51 | -.1 | 47 |
| % RANK | 90 | 60 | 85 | 80 | 15 | 90 | 80 | 35 | 60 | 45 | 80 | >95 | 95 |

Study this attractively made, homozygous polled, homozygous black herd sire prospect that combines softness, athleticism and muscle expression. He is a son of the popular ELCX Kings Landing who has been proven to produce progeny with complete phenotypes and added value. His dam is a daughter of the great MAGS Zodiac. This one would be a great addition to your herd bull arsenal.

SPRING YEARLING BULLS



LOT 12



LOT 13

LOT 12 **MAGS KNOCK YOUR SOCKS OFF 2612H ET**

2/11/2022 | LIM-FLEX(68/61.3) | MAGS 2612K | HOMO BLK (P-2) | HOMO PLD (P-3) | LFM2519171

PAP | 39

Act. BW | 82
Adj. WW | 770
Adj. YW | 1374
Adj. REA | 16.48
Adj. IMF | 2.980
Act. SC | 37.2

MAGS XYLOID
ELCX KINGS LANDING 599 D ET
WLR PRADA

MAGS ZODIAC
MAGS DROP THE COOKIE
MAGS ANDREA

DHVO DEUCE 132R
BOHI RHONDA 314R
MAGSWL USUAL SUSPECT 538U
AUTO REBECA 292S
MAGS WINSTON
MAGS XANTHOUS
LH RODEMASTER 338R
AUTO COOKIE CUTTER 295R

| | CE | BW | WW | YW | MK | CM | SC | DC | YG | CW | RE | MB | \$MI |
|----------|----|-----|----|-----|----|----|----|----|------|----|-----|------|------|
| GED EPDs | 9 | 2.8 | 75 | 123 | 25 | 4 | .6 | 14 | -.28 | 31 | .72 | -.11 | 51 |
| % RANK | 80 | 90 | 35 | 25 | 15 | 90 | 80 | 35 | 25 | 65 | 45 | >95 | 95 |

Study this attractively made, homozygous polled, red herd sire prospect that combines look, softness, athleticism and muscle expression. He is a son of ELCX Kings Landing, the popular AI sire proven to produce standout progeny. His daughters will be destined for the keeper pen.

LOT 13 **MAGS KENNEY STEAK HOUSE 2609K ET**

2/8/2022 | LIM-FLEX(56/48) | MAGS 2609K | HOMO BLK (P-3) | HOMO PLD (P-1) | LFM2519197

PAP | 70

Act. BW | 86
Adj. WW | 817
Adj. YW | 1377
Adj. REA | 14.62
Adj. IMF | 2.955
Act. SC | 38.1

S A V RESOURCE 1441
AHCC HEMI 0901E ET
LVLS 9066U

MAGS XYLOID
MAGS ANDRIANNA
MAGS SALINA

RITO 707 OF IDEAL 3407 7075
S A V BLACKCAP MAY 4136
LVLS FARMER JOHN 7428P
LVLS9066R
DHVO DEUCE 132R
BOHI RHONDA 314R
BR MIDLAND
MAGS LADY ACE

| | CE | BW | WW | YW | MK | CM | SC | DC | YG | CW | RE | MB | \$MI |
|----------|----|----|----|-----|----|----|-----|----|------|----|-----|-----|------|
| GED EPDs | 10 | 1 | 76 | 123 | 18 | 5 | 1.4 | 13 | -.06 | 49 | .63 | .24 | 62 |
| % RANK | 65 | 55 | 30 | 25 | 80 | 75 | 10 | 50 | 80 | 15 | 60 | 40 | 40 |

This herd sire prospect brings the pounds. Here is a big, stout, wide-made and ruggedly designed purebred that comes to us in a heavyweight, homozygous polled and homozygous black package. He is sired by AHCC Hemi 0901E, the big data herd sire that transmits fast-growing, complete progeny. Bid with confidence sale day.

SPRING YEARLING BULLS



LOT 14



LOT 15

LOT 14

MAGS KIDDNAPPER 2619K ET

2/14/2022 | LIM-FLEX(53/47.3) | MAGS 2619K | HOMO BLK (P-2) | HOMO PLD (P-3) | LFM2519033

PAP | 44

Act. BW | 90
Adj. WW | 718
Adj. YW | 1364
Adj. REA | 15.24
Adj. IMF | 3.275
Act. SC | 39.3

MAGS APPLESEED
MAGS CABLE
MAGS ZEQUIN

MAGS ZODIAC
MAGS DROP THE COOKIE
MAGS ANDREA

RITO 6EM3 OF 4L1 EMBLAZON
MAGS WAY TO SHINE
BOHI TOP DOLLAR 7144T
WERNER RITA 118
MAGS WINSTON
MAGS XANTHOUS
LH RODEMASTER 338R
AUTO COOKIE CUTTER 295R

| | CE | BW | WW | YW | MK | CM | SC | DC | YG | CW | RE | MB | \$MI |
|----------|----|----|----|-----|----|----|-----|----|-----|----|-----|-----|------|
| GED EPDs | 11 | 3 | 89 | 143 | 25 | 6 | 1.1 | 16 | .01 | 46 | .43 | .34 | 69 |
| % RANK | 50 | 95 | 4 | 4 | 15 | 55 | 35 | 15 | 95 | 20 | 90 | 20 | 15 |

Attractive made, homozygous polled and homozygous black. This herd sire prospect combines softness, athleticism and muscle expression. He is a son of the popular MAGS Cable and his dam is MAGS Zodiac daughter. On paper, he ranks in the top 4% for both weaning weight and yearling weight. He would make a great addition to your herd.

LOT 15

MAGS KANSAS 2628K ET

2/20/2022 | LIM-FLEX(54/49) | MAGS 2628K | HOMO BLK (T) | HOMO PLD (P-2) | LFM2519050

PAP | 47

Act. BW | 86
Adj. WW | 784
Adj. YW | 1389
Adj. REA | 13.56
Adj. IMF | 5.045
Act. SC | 38.6

MAGS CABLE
MAGS FEDERAL RESERVE ET
CJSL 4357B ET

MAGS WINSTON
MAGS DARE TO LOVE ME ET
MAGS XTRA REST

MAGS APPLESEED
MAGS ZEQUIN
S A V HESSTON 2217
AHCC XHIBIT THIS X045
BT CROSSOVER 758N
MAGS STRAWBERRY
DHVO DEUCE 132R
MAGS UNREST

| | CE | BW | WW | YW | MK | CM | SC | DC | YG | CW | RE | MB | \$MI |
|----------|----|-----|----|-----|----|----|----|----|-----|----|-----|-----|------|
| GED EPDs | 14 | 2.4 | 89 | 141 | 17 | 8 | .8 | 18 | .01 | 34 | .29 | .54 | 76 |
| % RANK | 15 | 85 | 4 | 5 | 85 | 20 | 70 | 3 | 95 | 55 | >95 | 4 | 2 |

Yet another MAGS Federal Reserve son that is fundamentally correct, stout featured, long bodied and wide based. His dam is a highly productive MAGS Winston daughter. On paper, he has tremendous growth, ranking in the top 5% for both weaning weight and yearling weight. This guy could be utilized in a variety of different programs.

SPRING YEARLING BULLS



LOT 16



LOT 17

LOT 16

MAGS KANE 642K

2/14/2022 | LIM-FLEX(43/39.2) | MAGS 642K | HOMO BLK (T) | HOMO PLD (P-1) | LFM2519032

PAP | 40

Act. BW | 90
Adj. WW | 722
Adj. YW | 1380
Adj. REA | 12.94
Adj. IMF | 3.835
Act. SC | 41.3

MAGS CABLE
MAGS FEDERAL RESERVE ET
CJSL 4357B ET

MAGS ZERXES 625Z
MAGS BEES
MAGS ZEES

MAGS APPLESEED
MAGS ZEQUIN
S A V HESSTON 2217
AHCC XHIBIT THIS X045
CONNEALY CONSENSUS 7229
SANDPOINT DIXIE ERICA 613
DHVO DEUCE 132R
MAGS SAUNTER

| | CE | BW | WW | YW | MK | CM | SC | DC | YG | CW | RE | MB | \$MI |
|----------|----|----|----|-----|----|----|-----|----|-----|----|-----|-----|------|
| GED EPDs | 13 | .9 | 76 | 115 | 25 | 8 | 1.5 | 13 | .08 | 38 | .24 | .62 | 75 |
| % RANK | 25 | 50 | 30 | 40 | 15 | 20 | 5 | 50 | >95 | 40 | >95 | 2 | 3 |

Here is another impressive MAGS Federal Reserve son that checks all the boxes. Heavily muscled, ruggedly designed, big bodied and sound on the move. His dam is an ultra-feminine MAGS Zerxes 625Z daughter. Homozygous polled and homozygous black. Bid with confidence, this herd sire prospect will have a tremendous impact on your cow herd.

LOT 17

MAGS KENT STATE 664K

2/4/2022 | LIM-FLEX(51/45) | MAGS 664K | HOMO BLK (P-2) | HOMO PLD (P-3) | LFM2519097

PAP | 43

Act. BW | 74
Adj. WW | 642
Adj. YW | 1250
Adj. REA | 14.34
Adj. IMF | 3.545
Act. SC | 35.4

MAGS AVIATOR
CJSL CREED 5042C
CJSL 2090Z

AHCC HEMI 0901E ET
MAGS HAVOC MAKER 541H
MAGS DATEABLE ET

MAGS WINSTON
MAGS XTRA REST
MAGS XUKALANI
MAGS XULEMA
S A V RESOURCE 1441
LVLS 9066U
TMCK HYDRAULIC 17Y
MAGS YOUR WORLD

| | CE | BW | WW | YW | MK | CM | SC | DC | YG | CW | RE | MB | \$MI |
|----------|----|----|----|-----|----|----|----|----|------|----|-----|-----|------|
| GED EPDs | 12 | .3 | 75 | 126 | 19 | 8 | .4 | 12 | -.08 | 29 | .75 | .53 | 73 |
| % RANK | 35 | 35 | 35 | 20 | 70 | 20 | 95 | 65 | 80 | 70 | 40 | 4 | 5 |

Here is a son of the heavily used CJSL Creed 5042C who stamps his progeny with an attractive phenotype and structural correctness. His dam is a standout AHCC Hemi 0901E daughter. This homozygous polled, homozygous black herd sire prospect ranks in the top 4% for marbling.

SPRING YEARLING BULLS



LOT 18



LOT 19

LOT 18

MAGS KEYHOLE 696K

2/28/2022 | LIM-FLEX(50/44.6) | MAGS 696K | HET BLK (T) | HOMO PLD (P-3) | LFM2519099

PAP | 38

Act. BW | 74
Adj. WW | 660
Adj. YW | 1249
Adj. REA | 12.62
Adj. IMF | 4.485
Act. SC | 38.5

SBLX FIRST CLASS
PBRS ENCORE 7195E ET
EF ZYNGA 356Z

MAGS CABLE
MAGS HALLOWED SOIL 622H
MAGS DIALED IN ET

DAMERON FIRST CLASS
MAGS MANUELA
TC TOTAL 410
MAGS PRETTY CHRISTINE
MAGS APPELESED
MAGS ZEQUIN
S A V HESSTON 2217
AUTO CARMINDA 656S

| | CE | BW | WW | YW | MK | CM | SC | DC | YG | CW | RE | MB | \$MI |
|----------|----|----|----|-----|----|----|-----|----|-----|----|-----|-----|------|
| GED EPDs | 13 | .6 | 66 | 104 | 20 | 8 | 1.3 | 12 | .11 | 29 | .24 | .48 | 67 |
| % RANK | 25 | 45 | 70 | 65 | 60 | 20 | 15 | 65 | >95 | 70 | >95 | 10 | 20 |

This herd sire prospect brings the pounds. Here is a big and stout purebred that comes to us in a heavyweight, homozygous polled package. He is sired by PBRS Encore 7195E, the big data herd sire that transmits fast-growing, complete progeny. Bid with confidence sale day.

LOT 19

MAGS KILO 722K

3/5/2022 | LIM-FLEX(54/47.7) | MAGS 722K | HOMO BLK (P-2) | HOMO PLD (P-3) | LFM2519065

PAP | 41

Act. BW | 77
Adj. WW | 890
Adj. YW | 1360
Adj. REA | 12.82
Adj. IMF | 3.040
Act. SC | 42.6

AHCC HEMI 0901E ET
MAGS HARD CORE 1623H ET
MAGS BRITANI

MAGS CABLE COWBOY
MAGS GLORIANA 194G
MAGS ABSOLUTELY NORMAL

S A V RESOURCE 1441
LVLS 9066U
MAGS Y-AXIS
MAGS XANTHOCOMIC
MAGS YIP
LHT MS THUNDER 36X
MAGS WINSTON
MAGS XTREMELY NORMAL

| | CE | BW | WW | YW | MK | CM | SC | DC | YG | CW | RE | MB | \$MI |
|----------|----|-----|----|-----|----|----|-----|----|----|----|----|-----|------|
| GED EPDs | 13 | 1.7 | 93 | 143 | 25 | 7 | 1.3 | 14 | -1 | 55 | .6 | .23 | 67 |
| % RANK | 25 | 70 | 2 | 4 | 15 | 35 | 20 | 35 | 70 | 5 | 65 | 40 | 20 |

This herd sire prospect will add performance, docility and carcass advantages to any herd he is applied to. He is stout and ruggedly designed. He is sired by MAGS Hard Core 1623H, the AHCC Hemi son that was the top seller in our 2021 sale. On paper, he ranks in the top 2% for weaning weight, top 4% yearling weight, top 20% scrotal, top 40% fat thickness and top 20% mainstream terminal index. This bull will produce high-dollar calves with extra carcass merit given his stacked pedigree, impressive EPD profile and big data.

SPRING & FALL YEARLING BULLS



LOT 20



LOT 21

LOT 20

MAGS KEITH 726K

3/6/2022 | LIM-FLEX(51/46) | MAGS 726K | HOMO BLK (T) | HOMO PLD (T) | LFM2519091

PAP | 42

Act. BW | 70
Adj. WW | 705
Adj. YW | 1285
Adj. REA | 13.74
Adj. IMF | 3.705
Act. SC | 40.8

SBLX FIRST CLASS
PBRS ENCORE 7195E ET
EF ZYNGA 356Z

MAGS SUMMIT
MAGS HAPPY GAS 1637H ET
MAGS BECCA

DAMERON FIRST CLASS
MAGS MANUELA
TC TOTAL 410
MAGS PRETTY CHRISTINE
MAGS ZAPPO
MAGS YDALL
MAGS WINSTON
MAGS YEVEN

| | CE | BW | WW | YW | MK | CM | SC | DC | YG | CW | RE | MB | \$MI |
|----------|----|----|----|-----|----|----|-----|----|------|----|----|-----|------|
| GED EPDs | 11 | .2 | 70 | 112 | 21 | 7 | 1.1 | 11 | -.04 | 46 | .7 | .24 | 60 |
| % RANK | 50 | 35 | 55 | 50 | 45 | 35 | 30 | 75 | 85 | 20 | 50 | 40 | 50 |

Here is a bull that deserves some serious attention. Study his length of body, level top and hind quarter dimension. Sired by the popular AI sire PBRS Encore 7195E who effectively transmits growth and marbling. MAGS Jay Bird 913J is the total package of breed-leading numbers and stand-out phenotype.

LOT 21

MAGS JAY BIRD 913J

9/15/2021 | LIM-FLEX(52/46.9) | MAGS 913J | HOMO BLK (T) | HOMO PLD (P-1) | LFM2508911

PAP | 48

Act. BW | 60
Adj. WW | 502
Adj. YW | 1056
Act. REA | 15.60
Act. IMF | 4.06
Act. SC | 34.3

SBLX FIRST CLASS
PBRS ENCORE 7195E ET
EF ZYNGA 356Z

MAGS AVIATOR
PBRS 691D ET
AUTO AJAY 206A

DAMERON FIRST CLASS
MAGS MANUELA
TC TOTAL 410
MAGS PRETTY CHRISTINE
MAGS WINSTON
MAGS XTRA REST
S A V BRAVE 8320
MAGS MANUELA

| | CE | BW | WW | YW | MK | CM | SC | DC | YG | CW | RE | MB | \$MI |
|----------|----|------|-----|----|----|----|----|----|-----|-----|-----|-----|------|
| GED EPDs | 12 | -1.3 | 52 | 86 | 22 | 8 | .9 | 11 | .07 | 16 | .23 | .41 | 60 |
| % RANK | 35 | 10 | >95 | 95 | 35 | 20 | 45 | 75 | >95 | >95 | >95 | 15 | 50 |

Turn your attention to this low birth weight herd sire prospect! He comes with a -1.3 birth weight EPD that ranks in the top 10%. Visually, he is ruggedly made, deep bodied and stout. His sire is PBRS Encore 7195E, the SLBX First Class son that has been heavily used across North America. His dam is a beautiful MAGS Aviator daughter. Take note, he is homozygous black and homozygous polled. Turn him into your heifer pen, you won't be disappointed!

SPRING & FALL YEARLING BULLS

LOT **22**

MAGS JOJO BLACK 914J

9/15/2021 | LIM-FLEX(52/46.9) | MAGS 914J | HET BLK (T) | HOMO PLD (P-1) | LFM2508913

PAP | 52

Act. BW | *
Adj. WW | 494
Adj. YW | 1025
Act. REA | 14.50
Act. IMF | 4.32
Act. SC | 36.3

SBLX FIRST CLASS
PBRs ENCORE 7195E ET
EF ZYNGA 356Z

MAGS AVIATOR
PBRs 691D ET
AUTO AJAY 206A

DAMERON FIRST CLASS
MAGS MANUELA
TC TOTAL 410
MAGS PRETTY CHRISTINE
MAGS WINSTON
MAGS XTRA REST
S A V BRAVE 8320
MAGS MANUELA

| | CE | BW | WW | YW | MK | CM | SC | DC | YG | CW | RE | MB | \$MI |
|----------|----|-----|-----|----|----|----|-----|----|----|----|-----|----|------|
| GED EPDs | 11 | -.8 | 52 | 84 | 22 | 7 | 1.1 | 16 | 0 | 25 | .56 | .4 | 61 |
| % RANK | 50 | 15 | >95 | 95 | 35 | 35 | 30 | 15 | 95 | 85 | 75 | 15 | 50 |

LOT **23**

MAGS KRYPTONITE 1200K ET

1/1/2022 | LIM-FLEX(53/47.3) | MAGS 1200K | HOMO BLK (P-2) | HOMO PLD (T) | LFM2518939

PAP | 59

Act. BW | 80
Adj. WW | 689
Adj. YW | 1219
Adj. REA | 13.56
Adj. IMF | 3.035
Act. SC | 35.3

MAGS ALI
CELL FREEDOM 8208F ET
LLJB ABSOLUTE STYLE 3056A

MAGS YIP
MAGS CUSTICA
MAGS USTICA

CONNELLY CONSENSUS 7229
MAGS YOKO
SILVEIRAS STYLE 9303
MAGS WASSAIL
MAGS THE GENERAL
AUTO CARMINDA 656S
RITO 112 OF 2536 RITO 616
MAGS MISCHIEF 14M

| | CE | BW | WW | YW | MK | CM | SC | DC | YG | CW | RE | MB | \$MI |
|----------|----|-----|----|----|----|----|-----|----|-----|----|-----|-----|------|
| GED EPDs | 11 | 2.1 | 67 | 98 | 23 | 6 | 1.3 | 9 | .07 | 32 | .15 | .19 | 56 |
| % RANK | 50 | 80 | 70 | 80 | 30 | 55 | 20 | 95 | >95 | 60 | >95 | 50 | 70 |

LOT **24**

MAGS KNOCK KNOCK 630K

2/12/2022 | LIM-FLEX(53/46.5) | MAGS 630K | HOMO BLK (T) | HET POLLED (T) | LFM2519019

PAP | 43

Act. BW | 74
Adj. WW | 688
Adj. YW | 1272
Adj. REA | 13.10
Adj. IMF | 4.625
Act. SC | 36.7

AHCC HEMI 0901E ET
MAGS HAWKEYE 1657H ET
MAGS ANDRIANNA

SILVEIRAS STYLE 9303
MAGS GENOME 1032G ET
WLR TAINTED LOVE 746X

S A V RESOURCE 1441
LVLS 9066U
MAGS XYLOID
MAGS SALINA
GAMBLES HOT ROD
SILVEIRAS ELBA 2520
WULFS URBAN COWBOY 2149U
MAGS PHANTOMS PRIZE

| | CE | BW | WW | YW | MK | CM | SC | DC | YG | CW | RE | MB | \$MI |
|----------|----|-----|----|-----|----|----|----|----|------|-----|-----|-----|------|
| GED EPDs | 12 | -.2 | 68 | 110 | 19 | 7 | 1 | 12 | -.14 | 12 | .42 | .16 | 58 |
| % RANK | 35 | 25 | 65 | 50 | 70 | 35 | 35 | 65 | 60 | >95 | 90 | 55 | 65 |

LOT **25**

MAGS KEYSLOT 1202K ET

1/3/2022 | LIM-FLEX(53/47.3) | MAGS 1202K | HOMO BLK (P-2) | HOMO PLD (T) | LFM2518940

PAP | 42

Act. BW | 77
Adj. WW | 671
Adj. YW | 1193
Adj. REA | 14.30
Adj. IMF | 2.615
Act. SC | 34.4

MAGS ALI
CELL FREEDOM 8208F ET
LLJB ABSOLUTE STYLE 3056A

MAGS YIP
MAGS CUSTICA
MAGS USTICA

CONNELLY CONSENSUS 7229
MAGS YOKO
SILVEIRAS STYLE 9303
MAGS WASSAIL
MAGS THE GENERAL
AUTO CARMINDA 656S
RITO 112 OF 2536 RITO 616
MAGS MISCHIEF 14M

| | CE | BW | WW | YW | MK | CM | SC | DC | YG | CW | RE | MB | \$MI |
|----------|----|----|----|-----|----|----|-----|----|-----|----|-----|-----|------|
| GED EPDs | 8 | 2 | 68 | 104 | 23 | 4 | 1.3 | 11 | .03 | 35 | .21 | .14 | 55 |
| % RANK | 90 | 80 | 65 | 65 | 30 | 90 | 20 | 75 | 95 | 50 | >95 | 60 | 75 |

LOT **26**

MAGS KANT STAY FOR LONG 1204K ET

1/4/2022 | LIM-FLEX(53/47.3) | MAGS 1204K | HOMO BLK (P-2) | HOMO PLD (T) | LFM2518944

PAP | 71

Act. BW | 80
Adj. WW | 666
Adj. YW | 1281
Adj. REA | 11.82
Adj. IMF | 2.920
Act. SC | 35.4

MAGS ALI
CELL FREEDOM 8208F ET
LLJB ABSOLUTE STYLE 3056A

MAGS YIP
MAGS CUSTICA
MAGS USTICA

CONNELLY CONSENSUS 7229
MAGS YOKO
SILVEIRAS STYLE 9303
MAGS WASSAIL
MAGS THE GENERAL
AUTO CARMINDA 656S
RITO 112 OF 2536 RITO 616
MAGS MISCHIEF 14M

| | CE | BW | WW | YW | MK | CM | SC | DC | YG | CW | RE | MB | \$MI |
|----------|-----|-----|----|-----|----|----|-----|----|-----|----|-----|-----|------|
| GED EPDs | 6 | 1.4 | 72 | 104 | 23 | 3 | 1.3 | 11 | .05 | 36 | .1 | .02 | 52 |
| % RANK | >95 | 65 | 45 | 65 | 30 | 95 | 20 | 75 | >95 | 45 | >95 | 85 | 90 |

LOT **27**

MAGS KRISTO 1207K ET

1/5/2022 | LIM-FLEX(56/48) | MAGS 1207K | HOMO BLK (P-3) | HOMO PLD (P-1) | LFM2519175

PAP | 52

Act. BW | 82
Adj. WW | 664
Adj. YW | 1220
Adj. REA | 14.74
Adj. IMF | 3.235
Act. SC | 40.5

S A V RESOURCE 1441
AHCC HEMI 0901E ET
LVLS 9066U

MAGS XYLOID
MAGS ANDRIANNA
MAGS SALINA

RITO 707 OF IDEAL 3407 7075
S A V BLACKCAP MAY 4136
LVLS FARMER JOHN 7428P
LVLS9066R
DHVO DEUCE 132R
BOHI RHONDA 314R
BR MIDLAND
MAGS LADY ACE

| | CE | BW | WW | YW | MK | CM | SC | DC | YG | CW | RE | MB | \$MI |
|----------|----|-----|----|-----|----|----|-----|----|------|----|-----|-----|------|
| GED EPDs | 9 | 1.3 | 73 | 116 | 18 | 4 | 1.4 | 15 | -.13 | 46 | .75 | .13 | 58 |
| % RANK | 80 | 65 | 45 | 40 | 80 | 90 | 10 | 25 | 65 | 20 | 40 | 65 | 60 |

LOT **28**

MAGS KIDDY DIDDY 1211K ET

1/9/2022 | LIM-FLEX(50/44.5) | MAGS 1211K | HOMO BLK (T) | DBL PLD | LFM2519179

PAP | 40

Act. BW | 81
Adj. WW | 636
Adj. YW | 1202
Adj. REA | 13.22
Adj. IMF | 2.885
Act. SC | 33.7

DHVO DEUCE 132R
MAGS XYLOID
BOHI RHONDA 314R

RITO 112 OF 2536 RITO 616
MAGS USTICA
MAGS MISCHIEF 14M

GPFF BLAQUE RULON
AMY JO DHAN 20L
EXLR NEW GENERATION 071M
DAVIS ROSETTA 9514
RITO 616 OF 4B20 6807
G A R PRECISION 2536
LVLS POLLED BLACK JACK
TS OAKLEAF 2237

| | CE | BW | WW | YW | MK | CM | SC | DC | YG | CW | RE | MB | \$MI |
|----------|----|-----|----|----|----|----|----|----|-----|----|-----|-----|------|
| GED EPDs | 10 | 2.6 | 67 | 98 | 20 | 5 | .8 | 14 | .1 | 36 | .08 | .22 | 57 |
| % RANK | 65 | 90 | 70 | 80 | 60 | 75 | 70 | 35 | >95 | 45 | >95 | 45 | 65 |

LOT **29**

MAGS KAL 1229K ET

1/16/2022 | LIM-FLEX(54/49) | MAGS 1229K | HOMO BLK (T) | HOMO PLD (P-2) | LFM2518964

PAP | 39

Act. BW | 87
Adj. WW | 773
Adj. YW | 1317
Adj. REA | 11.76
Adj. IMF | 4.120
Act. SC | 41.0

MAGS CABLE
MAGS FEDERAL RESERVE ET
CJSL 4357B ET

MAGS WINSTON
MAGS DARE TO LOVE ME ET
MAGS XTRA REST

MAGS APPLESEED
MAGS ZEQUIN
S A V HESSTON 2217
AHCC XHIBIT THIS X045
BT CROSSOVER 758N
MAGS STRAWBERRY
DHVO DEUCE 132R
MAGS UNREST

| | CE | BW | WW | YW | MK | CM | SC | DC | YG | CW | RE | MB | \$MI |
|----------|----|-----|----|-----|----|----|----|----|-----|----|-----|----|------|
| GED EPDs | 12 | 2.7 | 83 | 127 | 17 | 6 | .8 | 16 | .06 | 29 | .22 | .6 | 76 |
| % RANK | 35 | 90 | 15 | 20 | 85 | 55 | 70 | 15 | >95 | 70 | >95 | 2 | 2 |

SPRING YEARLING BULLS

LOT 30 MAGS KITE FIGHTING MACHINE 1230K ET

1/17/2022 | LIM-FLEX(51/46.3) | MAGS 1230K | HOMO BLK (T) | HOMO PLD (P-1) | LFM2518965

| | | |
|------------------|----------------------------|---------------------------|
| PAP 39 | MAGS AVIATOR | MAGS WINSTON |
| Act. BW 79 | CJSL CREED 5042C | MAGS XTRA REST |
| Adj. WW 663 | CJSL 2090Z | MAGS XUKALANI |
| Adj. YW 1310 | | MAGS XULEMA |
| Adj. REA 15.88 | EXAR UPSHOT 0562B | SITZ UPWARD 307R |
| Adj. IMF 2.975 | MAGS BLUE RIBBON ET | EXAR BARBARA T020 |
| Act. SC 37.0 | WLR ELIXER | MAGSWL USUAL SUSPECT 538U |
| | | EXLR LUANA 505P |

| | | | | | | | | | | | | | |
|----------|-----------|-----------|-----------|-----------|-----------|-----------|-----------|-----------|-----------|-----------|-----------|-----------|-------------|
| | CE | BW | WW | YW | MK | CM | SC | DC | YG | CW | RE | MB | \$MI |
| GED EPDs | 10 | 2.1 | 70 | 124 | 20 | 7 | .2 | 8 | -.09 | 42 | .86 | .54 | 72 |
| % RANK | 65 | 80 | 55 | 25 | 60 | 35 | >95 | 95 | 75 | 30 | 30 | 4 | 10 |

LOT 31 MAGS KEVIN 2503K ET

2/3/2022 | LIM-FLEX(56/48) | MAGS 2503K | HOMO BLK (P-3) | HOMO PLD (P-1) | LFM2519194

| | | |
|------------------|---------------------------|-----------------------------|
| PAP 39 | S A V RESOURCE 1441 | RITO 707 OF IDEAL 3407 7075 |
| Act. BW 93 | AHCC HEMI 0901E ET | S A V BLACKCAP MAY 4136 |
| Adj. WW 694 | LVLS 9066U | LVLS FARMER JOHN 7428P |
| Adj. YW 1353 | | LVLS9066R |
| Adj. REA 14.72 | MAGS XYLOID | DHVO DEUCE 132R |
| Adj. IMF 3.340 | MAGS ANDRIANNA | BOHI RHONDA 314R |
| Act. SC 38.8 | MAGS SALINA | BR MIDLAND |
| | | MAGS LADY ACE |

| | | | | | | | | | | | | | |
|----------|-----------|-----------|-----------|-----------|-----------|-----------|-----------|-----------|-----------|-----------|-----------|-----------|-------------|
| | CE | BW | WW | YW | MK | CM | SC | DC | YG | CW | RE | MB | \$MI |
| GED EPDs | 7 | .8 | 67 | 114 | 18 | 3 | 1.4 | 16 | -.16 | 54 | .91 | .24 | 61 |
| % RANK | 95 | 50 | 70 | 45 | 80 | 95 | 10 | 15 | 55 | 10 | 25 | 40 | 50 |

LOT 32 MAGS KYLE 2605K ET

2/5/2022 | LIM-FLEX(56/48) | MAGS 2605K | HOMO BLK (P-3) | HOMO PLD (P-1) | LFM2519195

| | | |
|------------------|---------------------------|-----------------------------|
| PAP 41 | S A V RESOURCE 1441 | RITO 707 OF IDEAL 3407 7075 |
| Act. BW 84 | AHCC HEMI 0901E ET | S A V BLACKCAP MAY 4136 |
| Adj. WW 721 | LVLS 9066U | LVLS FARMER JOHN 7428P |
| Adj. YW 1273 | | LVLS9066R |
| Adj. REA 13.76 | MAGS XYLOID | DHVO DEUCE 132R |
| Adj. IMF 3.420 | MAGS ANDRIANNA | BOHI RHONDA 314R |
| Act. SC 36.9 | MAGS SALINA | BR MIDLAND |
| | | MAGS LADY ACE |

| | | | | | | | | | | | | | |
|----------|-----------|-----------|-----------|-----------|-----------|-----------|-----------|-----------|-----------|-----------|-----------|-----------|-------------|
| | CE | BW | WW | YW | MK | CM | SC | DC | YG | CW | RE | MB | \$MI |
| GED EPDs | 8 | .9 | 68 | 113 | 18 | 4 | 1.4 | 17 | -.06 | 44 | .67 | .23 | 60 |
| % RANK | 90 | 50 | 65 | 45 | 80 | 90 | 10 | 10 | 80 | 25 | 55 | 40 | 55 |

LOT 33 MAGS KARROT TOP 2615K ET

2/12/2022 | LIM-FLEX(43/39.1) | MAGS 2615K | HOMO BLK (P-1) | HOMO PLD (P-2) | LFM2519199

| | | |
|------------------|---------------------------|------------------------|
| PAP 46 | MAGS WINSTON | BT CROSSOVER 758N |
| Act. BW 82 | MAGS ZODIAC | MAGS STRAWBERRY |
| Adj. WW 711 | MAGS XANTHOUS | DHVO DEUCE 132R |
| Adj. YW 1314 | | BOHI RHONDA 314R |
| Adj. REA 13.50 | RITO 112 OF 2536 RITO 616 | RITO 616 OF 4B20 6807 |
| Adj. IMF 4.955 | MAGS USTICA | G A R PRECISION 2536 |
| Act. SC 36.2 | MAGS MISCHIEF 14M | LVLS POLLED BLACK JACK |
| | | TS OAKLEAF 2237 |

| | | | | | | | | | | | | | |
|----------|-----------|-----------|-----------|-----------|-----------|-----------|-----------|-----------|-----------|-----------|-----------|-----------|-------------|
| | CE | BW | WW | YW | MK | CM | SC | DC | YG | CW | RE | MB | \$MI |
| GED EPDs | 14 | .4 | 72 | 114 | 19 | 6 | .6 | 13 | -.01 | 34 | .21 | .2 | 59 |
| % RANK | 15 | 40 | 45 | 45 | 70 | 55 | 80 | 50 | 90 | 55 | >95 | 50 | 55 |

LOT 34 MAGS KAFUE 2616K ET

2/13/2022 | LIM-FLEX(53/47.4) | MAGS 2616K | HET BLK (T) | HOMO PLD (T) | LFM2519200

| | | |
|------------------|----------------------------|---------------------|
| PAP 42 | MAGS APPLE JACK | MAGS XUKALANI |
| Act. BW 86 | MAGS FIRESTONE 218F | WLR UGLY BETTY 432U |
| Adj. WW 680 | MAGS DAYSTAR | MAGS ZODIAC |
| Adj. YW 1268 | | MAGS ACTION MOVE |
| Adj. REA 14.82 | MAGS Y-AXIS | TC ABERDEEN 759 |
| Adj. IMF 2.520 | MAGS AMAZON | MAGS UAHUKA |
| Act. SC 34.3 | ENG D RIVER WILD 1066Y | G A R PREDESTINED |
| | | MAGS RIVER WILD |

| | | | | | | | | | | | | | |
|----------|-----------|-----------|-----------|-----------|-----------|-----------|-----------|-----------|-----------|-----------|-----------|-----------|-------------|
| | CE | BW | WW | YW | MK | CM | SC | DC | YG | CW | RE | MB | \$MI |
| GED EPDs | 11 | 2.1 | 74 | 123 | 19 | 6 | 1 | 13 | -.17 | 45 | .65 | .05 | 56 |
| % RANK | 50 | 80 | 40 | 25 | 70 | 55 | 45 | 50 | 55 | 20 | 60 | 80 | 75 |

LOT 35 MAGS KRUNCHWRAP SUPREME 2620K ET

2/15/2022 | LIM-FLEX(54/49) | MAGS 2620K | HOMO BLK (T) | HOMO PLD (P-2) | LFM2519154

| | | |
|------------------|--------------------------------|-----------------------|
| PAP 40 | MAGS CABLE | MAGS APPLESEED |
| Act. BW 86 | MAGS FEDERAL RESERVE ET | MAGS ZEQUIN |
| Adj. WW 763 | CJSL 4357B ET | S A V HESSTON 2217 |
| Adj. YW 1220 | | AHCC XHIBIT THIS X045 |
| Adj. REA 13.16 | MAGS WINSTON | BT CROSSOVER 758N |
| Adj. IMF 3.560 | MAGS DARE TO LOVE ME ET | MAGS STRAWBERRY |
| Act. SC 36.4 | MAGS XTRA REST | DHVO DEUCE 132R |
| | | MAGS UNREST |

| | | | | | | | | | | | | | |
|----------|-----------|-----------|-----------|-----------|-----------|-----------|-----------|-----------|-----------|-----------|-----------|-----------|-------------|
| | CE | BW | WW | YW | MK | CM | SC | DC | YG | CW | RE | MB | \$MI |
| GED EPDs | 14 | .8 | 69 | 103 | 17 | 7 | .8 | 16 | .01 | 21 | .28 | .51 | 69 |
| % RANK | 15 | 50 | 60 | 70 | 85 | 35 | 70 | 15 | 95 | 90 | >95 | 5 | 15 |

LOT 36 MAGS KILLIAN 2624K ET

2/16/2022 | LIM-FLEX(56/48) | MAGS 2624K | HOMO BLK (P-3) | HOMO PLD (P-1) | LFM2519204

| | | |
|------------------|---------------------------|-----------------------------|
| PAP 40 | S A V RESOURCE 1441 | RITO 707 OF IDEAL 3407 7075 |
| Act. BW 88 | AHCC HEMI 0901E ET | S A V BLACKCAP MAY 4136 |
| Adj. WW 728 | LVLS 9066U | LVLS FARMER JOHN 7428P |
| Adj. YW 1234 | | LVLS9066R |
| Adj. REA 14.38 | MAGS XYLOID | DHVO DEUCE 132R |
| Adj. IMF 2.805 | MAGS ANDRIANNA | BOHI RHONDA 314R |
| Act. SC 35.4 | MAGS SALINA | BR MIDLAND |
| | | MAGS LADY ACE |

| | | | | | | | | | | | | | |
|----------|-----------|-----------|-----------|-----------|-----------|-----------|-----------|-----------|-----------|-----------|-----------|-----------|-------------|
| | CE | BW | WW | YW | MK | CM | SC | DC | YG | CW | RE | MB | \$MI |
| GED EPDs | 7 | 2.8 | 72 | 120 | 18 | 3 | 1.4 | 15 | -.14 | 43 | .7 | .31 | 64 |
| % RANK | 95 | 90 | 45 | 30 | 80 | 95 | 10 | 25 | 60 | 25 | 50 | 25 | 30 |

LOT 37 MAGS KARSON 2626K ET

2/18/2022 | LIM-FLEX(56/48) | MAGS 2626K | HOMO BLK (P-3) | HOMO PLD (P-1) | LFM2519205

| | | |
|------------------|---------------------------|-----------------------------|
| PAP 41 | S A V RESOURCE 1441 | RITO 707 OF IDEAL 3407 7075 |
| Act. BW 79 | AHCC HEMI 0901E ET | S A V BLACKCAP MAY 4136 |
| Adj. WW 650 | LVLS 9066U | LVLS FARMER JOHN 7428P |
| Adj. YW 1226 | | LVLS9066R |
| Adj. REA 13.32 | MAGS XYLOID | DHVO DEUCE 132R |
| Adj. IMF 3.585 | MAGS ANDRIANNA | BOHI RHONDA 314R |
| Act. SC 42.5 | MAGS SALINA | BR MIDLAND |
| | | MAGS LADY ACE |

| | | | | | | | | | | | | | |
|----------|-----------|-----------|-----------|-----------|-----------|-----------|-----------|-----------|-----------|-----------|-----------|-----------|-------------|
| | CE | BW | WW | YW | MK | CM | SC | DC | YG | CW | RE | MB | \$MI |
| GED EPDs | 10 | -.1 | 63 | 104 | 18 | 5 | 1.4 | 15 | -.11 | 40 | .58 | .3 | 61 |
| % RANK | 65 | 30 | 85 | 65 | 80 | 75 | 10 | 25 | 70 | 35 | 70 | 30 | 45 |

SPRING YEARLING BULLS

LOT **38**

MAGS KARTER 3401K ET

3/8/2022 | LIM-FLEX(68/59.2) | MAGS 3401K | HOMO BLK (P-1) | HET POLLED (T) | LFM2519886

| | | |
|------------------|-------------------------|-----------------------------|
| PAP 41 | S A V RESOURCE 1441 | RITO 707 OF IDEAL 3407 7075 |
| Act. BW 75 | AHCC HEMI 0901E ET | S A V BLACKCAP MAY 4136 |
| Adj. WW 612 | LVLS 9066U | LVLS FARMER JOHN 7428P |
| Adj. YW 1145 | | LVLS9066R |
| Adj. REA 15.78 | MAGS XYLOID | DHVO DEUCE 132R |
| Adj. IMF 3.255 | FBFL PRINCESS KATE 406C | BOHI RHONDA 314R |
| Act. SC 36.4 | DPBN MEDAL 4063U | CRSL 5064R |
| | | EXLR LUVLY 603P |

| | CE | BW | WW | YW | MK | CM | SC | DC | YG | CW | RE | MB | \$MI |
|----------|----|-----|----|-----|----|----|-----|----|-----|----|-----|-----|------|
| GED EPDs | 9 | 2.5 | 78 | 122 | 18 | 4 | 1.2 | 15 | -15 | 36 | .64 | .06 | 57 |
| % RANK | 80 | 90 | 25 | 25 | 80 | 90 | 30 | 25 | 60 | 45 | 60 | 75 | 70 |

LOT **39**

MAGS KOLT FORD 504K

1/8/2022 | LIM-FLEX(51/44.6) | MAGS 504K | HOMO BLK (P-1) | HOMO PLD (T) | LFM2518948

| | | |
|------------------|--------------------------|--------------------------|
| PAP 40 | AHCC ANGUS VALLEY 911B | S A V ANGUS VALLEY 1867 |
| Act. BW 75 | AHCC DAKOTA THUNDER 363D | LVLS 9066U |
| Adj. WW 630 | AHCC MISS ROBIN A363 | MAGS UR A ROBIN |
| Adj. YW 1194 | | AHCC MISS GRIDMAKER W963 |
| Adj. REA 11.40 | MAGS CABLE COWBOY | MAGS YIP |
| Adj. IMF 2.780 | MAGS FITTING WELL 399F | LHT MS THUNDER 36X |
| Act. SC 41.6 | MAGS BOONIES | MAGS XYLOID |
| | | MAGS XRAMONA |

| | CE | BW | WW | YW | MK | CM | SC | DC | YG | CW | RE | MB | \$MI |
|----------|----|----|----|-----|----|----|----|----|----|----|-----|-----|------|
| GED EPDs | 13 | -6 | 80 | 128 | 22 | 8 | 1 | 17 | 0 | 39 | .27 | .49 | 72 |
| % RANK | 25 | 20 | 20 | 20 | 35 | 20 | 35 | 10 | 95 | 35 | >95 | 10 | 5 |

LOT **40**

MAGS KAM KAM 507K

1/10/2022 | LIM-FLEX(53/47.9) | MAGS 507K | HOMO BLK (P-3) | HOMO PLD (P-2) | LFM2519168

| | | |
|------------------|---------------------------|----------------------|
| PAP 42 | PBRS BUNK HOUSE 48B | MAGS YIP |
| Act. BW 87 | CELL GUARD HOUSE 9300G ET | LBAF SHAWNEE 602 |
| Adj. WW 670 | MAGS DOMINANT DEVA | MAGS EAGLE |
| Adj. YW 1164 | | CYWD ZAYLEE 6Z |
| Adj. REA 11.74 | TMCK BALANCER 173U | BASIN FRANCHISE P142 |
| Adj. IMF 2.490 | MAGS CASSEROLE ET | EXLR DUCHESS 528P |
| Act. SC 35.7 | MAGS WITH CLASS | DHVO DEUCE 132R |
| | | MAGS PHYLLLO |

| | CE | BW | WW | YW | MK | CM | SC | DC | YG | CW | RE | MB | \$MI |
|----------|----|----|----|----|----|----|----|----|------|----|-----|-----|------|
| GED EPDs | 10 | .9 | 69 | 98 | 20 | 6 | 1 | 10 | -.09 | 35 | .23 | .12 | 56 |
| % RANK | 65 | 50 | 60 | 80 | 60 | 55 | 45 | 85 | 75 | 50 | >95 | 65 | 75 |

LOT **41**

MAGS KOSCIUSKO KOUNTY 509K

1/12/2022 | LIM-FLEX(59/53.6) | MAGS 509K | HET BLK (T) | HOMO PLD (T) | LFM2518958

| | | |
|------------------|--------------------|---------------------------|
| PAP 40 | RLBH AIR FORCE ONE | EF XCESSIVE FORCE |
| Act. BW 86 | FWLY CAN DO | EF YAFFA 821Y |
| Adj. WW 736 | CLLL CRYSTAL 334W | WLR DIRECT HIT |
| Adj. YW 1302 | | AUTO CHRISTY 8889R |
| Adj. REA 13.68 | EXAR UPSHOT 0562B | SITZ UPWARD 307R |
| Adj. IMF 2.430 | MAGS BACK TALK ET | EXAR BARBARA T020 |
| Act. SC 42.8 | WLR ELIXER | MAGSWL USUAL SUSPECT 538U |
| | | EXLR LUANA 505P |

| | CE | BW | WW | YW | MK | CM | SC | DC | YG | CW | RE | MB | \$MI |
|----------|----|-----|----|-----|----|----|----|----|-----|----|-----|-----|------|
| GED EPDs | 10 | 2.1 | 79 | 128 | 20 | 7 | .8 | 14 | -18 | 55 | .75 | .27 | 65 |
| % RANK | 65 | 80 | 25 | 20 | 60 | 35 | 70 | 35 | 50 | 5 | 40 | 35 | 25 |



Calving-ease and calf vigor are traits upon which the Limousin breed was founded on in this country. Relative to growth, the Limousin breed remains a calving-ease leader. Easy births not only allow cows the opportunity to breed back faster, they ultimately result in more pounds to sell at weaning.

We have made a concentrated effort to bring you a variety of bulls that excel in the beef industry's Number 1 profitability trait—calving-ease. Take note, we have gone the extra mile in our breeding program to propagate genetics that excel in terms of calving-ease by utilizing genetics we know are easy calving.

As you study the table below, you will notice the bulls offered in this sale excel in all three calving-ease measurements—Calving East Direct, Birth Weight and Calving Ease Maternal. However, as evidenced by the table we have been able to maintain industry leading levels of calving-ease without sacrificing growth and carcass performance. Take note of how our Weaning Weight, Yearling Weight and Carcass EPDs stack up not only to Limousin and Lim-Flex (Angus Hybrids) breed averages, but to other competing breeds as well.

The bottom line is this, with Magness Land & Cattle bulls, you CAN have the best of both worlds. Calves that come light and easy at birth, but with the inherent genetic ability to efficiently produce pounds—that is a profitable combination.

SPRING YEARLING BULLS

LOT 42 **MAGS KORO 514K**
 1/19/2022 | LIM-FLEX(50/44.4) | MAGS 514K | HOMO BLK (P-1) | HOMO PLD (P-3) | LFM2518967

PAP | 62

| | | |
|------------------|---------------------------|------------------------|
| Act. BW 82 | PVF INSIGHT 0129 | S A V BRILLIANCE 8077 |
| Adj. WW 708 | DHIL COLT 5793C | PVF MISSIE 790 |
| Adj. YW 1316 | PBRS TOUCH ME GENTLY 798T | DHVO DEUCE 132R |
| Adj. REA 15.32 | | CARROUSELS PINA COLADA |
| Adj. IMF 2.285 | MAGS WINSTON | BT CROSSOVER 758N |
| Act. SC 36.1 | MAGS ADALL | MAGS STRAWBERRY |
| | MAGS YDALL | LH RODEMASTER 338R |
| | | MAGS UDALL |

| | CE | BW | WW | YW | MK | CM | SC | DC | YG | CW | RE | MB | \$MI |
|----------|----|-----|----|-----|----|----|----|----|------|----|-----|-----|------|
| GED EPDs | 10 | 1.1 | 75 | 116 | 19 | 5 | .5 | 13 | -.11 | 49 | .71 | .16 | 59 |
| % RANK | 65 | 55 | 35 | 40 | 70 | 75 | 85 | 50 | 70 | 15 | 50 | 55 | 55 |

LOT 43 **MAGS KAZAN RETTO 515K**
 1/21/2022 | LIM-FLEX(50/45.6) | MAGS 515K | HOMO BLK (T) | HOMO PLD (P-2) | LFM2519579

PAP | 46

| | | |
|------------------|------------------------------|---------------------|
| Act. BW 81 | PBRS BUNK HOUSE 48B | MAGS YIP |
| Adj. WW 650 | MAGS HUSKER 1665H ET | LBAF SHAWNEE 60Z |
| Adj. YW 1270 | PBRS CLASSEN ET | EXAR CLASSEN 1422B |
| Adj. REA 14.26 | | WLR RENDEZVOUS 050R |
| Adj. IMF 3.945 | PBRS ENCORE 7195E ET | SBXL FIRST CLASS |
| Act. SC 35.6 | MAGS GUESS JEANS 373G | EF ZYNKA 356Z |
| | MAGS EBONEY AND IVORY | MAGS ARGO |
| | | MAGS CREPE ET |

| | CE | BW | WW | YW | MK | CM | SC | DC | YG | CW | RE | MB | \$MI |
|----------|----|-----|----|-----|----|----|----|----|-----|----|-----|-----|------|
| GED EPDs | 10 | -.2 | 66 | 101 | 16 | 7 | .8 | 11 | .01 | 46 | .53 | .73 | 76 |
| % RANK | 65 | 25 | 70 | 75 | 90 | 35 | 60 | 75 | 95 | 20 | 75 | 1 | 2 |

LOT 44 **MAGS KENTUCKY DERBY 518K**
 1/24/2022 | LIM-FLEX(75/67.1) | MAGS 518K | HOMO BLK (P-1) | HOMO PLD (P-3) | LFM2518974

PAP | 35

| | | |
|------------------|----------------------------|--------------------------|
| Act. BW 69 | MAGS THE GENERAL | AUTO DOLLAR GENERAL 122R |
| Adj. WW 678 | MAGS YIP | EXLR LUVLY 821M |
| Adj. YW 1120 | AUTO CARMINDA 656S | JCL LODESTAR 27L |
| Adj. REA 13.72 | | AUTO CARMINDA 872P |
| Adj. IMF 3.530 | MAGS FEDERAL RESERVE ET | MAGS CABLE |
| Act. SC 35.9 | MAGS HIGHLIGHT 526H | CJSL 4357B ET |
| | MAGS BERTA | EXAR UPSHOT 0562B |
| | | EXLR LUVLY 821M |

| | CE | BW | WW | YW | MK | CM | SC | DC | YG | CW | RE | MB | \$MI |
|----------|----|----|----|-----|----|----|----|----|------|----|-----|-----|------|
| GED EPDs | 14 | .7 | 73 | 117 | 17 | 7 | .6 | 12 | -.17 | 44 | .73 | .22 | 62 |
| % RANK | 15 | 45 | 45 | 35 | 85 | 35 | 80 | 65 | 55 | 25 | 45 | 45 | 45 |

LOT 45 **MAGS KOWLOON 519K**
 1/24/2022 | LIM-FLEX(57/50.5) | MAGS 519K | HOMO BLK (T) | HOMO PLD (P-3) | LFM2518975

PAP | 62

| | | |
|------------------|--------------------------------|----------------------|
| Act. BW 71 | MAGS ZODIAC | MAGS WINSTON |
| Adj. WW 720 | CJSL DAUNTLESS 6257D ET | MAGS XANTHOS |
| Adj. YW 1278 | LLJB ABSOLUTE STYLE 3056A | SILVEIRAS STYLE 930Z |
| Adj. REA 13.02 | | MAGS WASSAIL |
| Adj. IMF 4.400 | AHCC HEMI 0901E ET | S A V RESOURCE 1441 |
| Act. SC 35.9 | MAGS HADLEY 516H | LVLS 9066U |
| | MAGS BOUNCY SKATER | MAGS YIP |
| | | MAGS ZINGY SKATER |

| | CE | BW | WW | YW | MK | CM | SC | DC | YG | CW | RE | MB | \$MI |
|----------|----|-----|----|-----|----|----|----|----|------|----|-----|-----|------|
| GED EPDs | 8 | 1.2 | 78 | 122 | 22 | 4 | .9 | 18 | -.03 | 46 | .55 | .25 | 63 |
| % RANK | 90 | 60 | 25 | 25 | 35 | 90 | 60 | 3 | 90 | 20 | 75 | 40 | 35 |

LOT 46 **MAGS KATAMORPHISM 535K**
 1/30/2022 | LIM-FLEX(68/59.5) | MAGS 535K | HOMO BLK (P-1) | HOMO PLD (P-1) | LFM2518986

PAP | 39

| | | |
|------------------|---------------------------------|------------------------|
| Act. BW 82 | EBFL YPSILANTI 420Y | TC ABERDEEN 759 |
| Adj. WW 697 | AHCC DIGGIN DEEP 903D ET | MAGS RAMADA |
| Adj. YW 1219 | LVLS 9066U | LVLS FARMER JOHN 7428P |
| Adj. REA 14.94 | | LVLS9066R |
| Adj. IMF 2.620 | MAGS UR A ROBIN | LH RODEMASTER 338R |
| Act. SC 38.6 | MAGS AZETTE | BOHI RED ROBIN 282R |
| | MAGS XUZZETTE | DHVO DEUCE 132R |
| | | MAGS SUZZETTE |

| | CE | BW | WW | YW | MK | CM | SC | DC | YG | CW | RE | MB | \$MI |
|----------|----|----|----|-----|----|----|-----|-----|------|----|-----|-----|------|
| GED EPDs | 10 | .7 | 68 | 107 | 23 | 6 | 1.6 | 7 | -.18 | 37 | .87 | .08 | 55 |
| % RANK | 65 | 45 | 65 | 60 | 30 | 55 | 5 | >95 | 50 | 45 | 25 | 75 | 75 |

LOT 47 **MAGS KROMMER 537K**
 1/31/2022 | LIM-FLEX(50/43.5) | MAGS 537K | HET BLK (T) | HOMO PLD (P-2) | LFM2518988

PAP | 36

| | | |
|------------------|--------------------------------|-------------------------|
| Act. BW 73 | EXAR MONUMENTAL 6056B | 3F EPIC 4631 |
| Adj. WW 699 | HBRL GATEWAY 9511G | FWY 7008 OF C085 4029 |
| Adj. YW 1200 | HBRL COVERIGRL 563C ET | WULFS ZANE X238Z |
| Adj. REA 12.96 | | AUTO EXCEPTIONAL 282S |
| Adj. IMF 3.975 | MAGS FEDERAL RESERVE ET | MAGS CABLE |
| Act. SC 38.2 | MAGS HEART BREAKER 511H | CJSL 4357B ET |
| | MAGS ALWAYS POKEY | CONNELLY CONSENSUS 7229 |
| | | MAGS Y SO POKEY |

| | CE | BW | WW | YW | MK | CM | SC | DC | YG | CW | RE | MB | \$MI |
|----------|----|-----|----|-----|----|----|----|----|-----|----|-----|-----|------|
| GED EPDs | 12 | -.5 | 74 | 108 | 20 | 8 | .9 | 15 | .02 | 29 | .31 | .83 | 82 |
| % RANK | 35 | 20 | 40 | 55 | 60 | 20 | 45 | 25 | 95 | 70 | 95 | 1 | 1 |

LOT 48 **MAGS KEY CLUB 617K**
 2/8/2022 | LIM-FLEX(59/50.8) | MAGS 617K | HET BLK (T) | HOMO PLD (T) | LFM2519006

PAP | 42

| | | |
|------------------|---------------------------------|-------------------------|
| Act. BW 94 | EBFL YPSILANTI 420Y | TC ABERDEEN 759 |
| Adj. WW 729 | AHCC DIGGIN DEEP 903D ET | MAGS RAMADA |
| Adj. YW 1185 | LVLS 9066U | LVLS FARMER JOHN 7428P |
| Adj. REA 12.82 | | LVLS9066R |
| Adj. IMF 3.445 | MAGS ALI | CONNELLY CONSENSUS 7229 |
| Act. SC 39.1 | MAGS CAFFINE | MAGS YOKO |
| | MAGS ZAFINAH | LH RODEMASTER 338R |
| | | MAGS THOROUGH BRED |

| | CE | BW | WW | YW | MK | CM | SC | DC | YG | CW | RE | MB | \$MI |
|----------|----|-----|----|-----|----|----|----|----|-----|----|-----|-----|------|
| GED EPDs | 9 | 1.5 | 66 | 103 | 23 | 6 | 2 | 13 | .02 | 29 | .17 | .23 | 58 |
| % RANK | 80 | 70 | 70 | 70 | 30 | 55 | 1 | 50 | 95 | 70 | >95 | 40 | 60 |

LOT 49 **MAGS KEEPING IT SPICY 618K**
 2/8/2022 | LIM-FLEX(65/59.2) | MAGS 618K | HOMO BLK (P-2) | HET POLLED (T) | LFM2519007

PAP | 40

| | | |
|------------------|--------------------------|--------------------|
| Act. BW 87 | RLBH AIR FORCE ONE | EF XCESSIVE FORCE |
| Adj. WW 699 | FWLY CAN DO | EF YAFFA 821Y |
| Adj. YW 1260 | CLLL CRYSTAL 334W | WLR DIRECT HIT |
| Adj. REA 13.12 | | AUTO CHRISTY 8889R |
| Adj. IMF 2.655 | MAGS ANCHOR | LH WAR HERO 195W |
| Act. SC 39.1 | TMCK DELILAH 391D | MGS XIPHOPAGOUS |
| | TMCK SWIZZLE 057A | AHCC WESTWIND W544 |
| | | TMCK SWIZZLE 25X |

| | CE | BW | WW | YW | MK | CM | SC | DC | YG | CW | RE | MB | \$MI |
|----------|----|-----|----|-----|----|----|----|----|------|----|----|-----|------|
| GED EPDs | 11 | 2.7 | 79 | 128 | 18 | 7 | 1 | 10 | -.14 | 44 | .7 | .29 | 66 |
| % RANK | 50 | 90 | 25 | 20 | 80 | 35 | 45 | 85 | 60 | 25 | 50 | 30 | 25 |

SPRING YEARLING BULLS

LOT **50**

MAGS KUBAN 619K

2/8/2022 | LIM-FLEX(51/45.4) | MAGS 619K | HOMO BLK (T) | HOMO PLD (T) | LFM2519008

PAP | 40

Act. BW | 69
Adj. WW | 633
Adj. YW | 1325
Adj. REA | 12.22
Adj. IMF | 3.915
Act. SC | 37.6

EXAR MONUMENTAL 6056B
HBRL GATEWAY 9511G
HBRL COVERIGRL 563C ET
PBRS 7266 ET
MAGS HIGH CLASS 724H
MAGS FLANNERY 341F
3F EPIC 4631
FWY 7008 OF C085 4029
WULFS ZANE X238Z
AUTO EXCEPTIONAL 282S
SBLX FIRST CLASS
EF ZYNGA 356Z
AHCC DAKOTA THUNDER 363D
MAGS AILEEN

| | CE | BW | WW | YW | MK | CM | SC | DC | YG | CW | RE | MB | \$MI |
|----------|----|----|----|-----|----|----|----|----|-----|----|-----|-----|------|
| GED EPDs | 12 | -1 | 81 | 135 | 18 | 8 | .9 | 12 | .08 | 49 | .31 | .52 | 73 |
| % RANK | 35 | 30 | 20 | 10 | 80 | 20 | 60 | 65 | >95 | 15 | 95 | 4 | 5 |

LOT **51**

MAGS KASEN 621K

2/9/2022 | LIM-FLEX(56/48.1) | MAGS 621K | HOMO BLK (P-1) | HOMO PLD (P-1) | LFM2519010

PAP | 52

Act. BW | 83
Adj. WW | 651
Adj. YW | 1244
Adj. REA | 13.74
Adj. IMF | 2.940
Act. SC | 41.1

EBFL YPSILANTI 420Y
AHCC DIGGIN DEEP 903D ET
LVLS 9066U
V A R GENERATION 2100
MAGS DEFINED XEROMA ET
MAGS XEROMAS
TC ABERDEEN 759
MAGS RAMADA
LVLS FARMER JOHN 7428P
LVLS9066R
CONNELLY CONSENSUS 7229
SANDPOINT BLACKBIRD 8809
DHVO DEUCE 132R
BOHI RHONDA 314R

| | CE | BW | WW | YW | MK | CM | SC | DC | YG | CW | RE | MB | \$MI |
|----------|----|----|----|----|-----|----|-----|----|-----|----|-----|-----|------|
| GED EPDs | 12 | .8 | 64 | 97 | 14 | 8 | 1.6 | 15 | .01 | 36 | .37 | .19 | 56 |
| % RANK | 35 | 50 | 80 | 80 | >95 | 20 | 5 | 25 | 95 | 45 | 95 | 50 | 70 |

LOT **52**

MAGS KICK START 627K

2/11/2022 | LIM-FLEX(47/41.8) | MAGS 627K | HOMO BLK (P-2) | HOMO PLD (P-2) | LFM2519016

PAP | 61

Act. BW | 80
Adj. WW | 703
Adj. YW | 1157
Adj. REA | 12.68
Adj. IMF | 3.410
Act. SC | 37.7

AHCC DAKOTA THUNDER 363D
MAGS GOOD WILL 130G
CYWD ZAYLEE 6Z
MAGS CABLE
MAGS HIGH AND MIGHTY 764H
MAGS EBONEY AND IVORY
AHCC ANGUS VALLEY 911B
AHCC MISS ROBIN A363
CONNELLY THUNDER
CYWD XOXOX 12X
MAGS APPESEED
MAGS ZEQUIN
MAGS ARGO
MAGS CREPE ET

| | CE | BW | WW | YW | MK | CM | SC | DC | YG | CW | RE | MB | \$MI |
|----------|----|-----|----|-----|----|----|----|----|------|----|-----|-----|------|
| GED EPDs | 10 | 2.1 | 72 | 112 | 23 | 7 | 1 | 14 | -.06 | 33 | .33 | .49 | 70 |
| % RANK | 65 | 80 | 45 | 50 | 30 | 35 | 45 | 35 | 80 | 60 | 95 | 10 | 10 |

LOT **53**

MAGS KAOMOJI 629K

2/11/2022 | LIM-FLEX(46/42) | MAGS 629K | HOMO BLK (P-2) | HET POLLED (T) | LFM2519018

PAP | 41

Act. BW | 85
Adj. WW | 681
Adj. YW | 1306
Adj. REA | 14.28
Adj. IMF | 3.230
Act. SC | 42.2

MAGS APPESEED
MAGS CABLE
MAGS ZEQUIN
LH RODEMASTER 338R
MAGS DANTES INFERNO ET
MAGS XTRA ARROGANT
RITO 6EM3 OF 4L1 EMBLAZON
MAGS WAY TO SHINE
BOHI TOP DOLLAR 7144T
WERNER RITA 118
JCL LODESTAR 27L
VERMILION E BLACKBIRD9546
GDAR GAME DAY 449
MAGS U KNOW U WANT ME

| | CE | BW | WW | YW | MK | CM | SC | DC | YG | CW | RE | MB | \$MI |
|----------|----|----|----|-----|----|----|-----|----|------|----|-----|----|------|
| GED EPDs | 12 | .9 | 71 | 108 | 20 | 7 | 1.2 | 9 | -.07 | 41 | .59 | .5 | 70 |
| % RANK | 35 | 50 | 50 | 55 | 60 | 35 | 20 | 95 | 80 | 30 | 70 | 5 | 10 |

LOT **54**

MAGS KING MAO 633K

2/12/2022 | LIM-FLEX(56/49.3) | MAGS 633K | HOMO BLK (P-1) | HOMO PLD (T) | LFM2519025

PAP | 52

Act. BW | 79
Adj. WW | 720
Adj. YW | 1329
Adj. REA | 13.90
Adj. IMF | 4.375
Act. SC | 36.7

MAGS APPESEED
MAGS CABLE
MAGS ZEQUIN
AHCC EARNING POWER 900E
ET
MAGS GYPSY ROSE 205G
SENNETT ROSETTA 09X
RITO 6EM3 OF 4L1 EMBLAZON
MAGS WAY TO SHINE
BOHI TOP DOLLAR 7144T
WERNER RITA 118
MAGS ANCHOR
LVLS 9066U
SAV 004 PREDOMINANT 4438

| | CE | BW | WW | YW | MK | CM | SC | DC | YG | CW | RE | MB | \$MI |
|----------|----|----|----|-----|----|----|-----|----|-----|----|-----|-----|------|
| GED EPDs | 12 | 1 | 83 | 136 | 25 | 8 | 1.6 | 14 | .01 | 32 | .37 | .39 | 70 |
| % RANK | 35 | 55 | 15 | 10 | 15 | 20 | 5 | 35 | 95 | 60 | 95 | 15 | 10 |

LOT **55**

MAGS KING ROD 636K

2/13/2022 | LIM-FLEX(51/46.4) | MAGS 636K | HOMO BLK (P-2) | HOMO PLD (P-3) | LFM2519026

PAP | 41

Act. BW | 80
Adj. WW | 689
Adj. YW | 1190
Adj. REA | 11.92
Adj. IMF | 3.270
Act. SC | 40.3

TMCK CASH FLOW 247C
MAGS FAULTLESS154F
MAGS ANDRIA
MAGS ANCHOR
MAGS C ME DANCE
MAGS XRAMONA
MAGS ALI
TMCK NINA 17X
LH RODEMASTER 338R
MAGS XANDRIA
LH WAR HERO 195W
MGS XIPHOPAGOUS
BALDRIDGE RANGERIDER R827
CFLX RAMONA 054U

| | CE | BW | WW | YW | MK | CM | SC | DC | YG | CW | RE | MB | \$MI |
|----------|----|------|----|-----|----|----|-----|----|-----|----|-----|-----|------|
| GED EPDs | 12 | -1.4 | 67 | 102 | 18 | 5 | 1.4 | 18 | .24 | 40 | .23 | .51 | 67 |
| % RANK | 35 | 10 | 70 | 70 | 80 | 75 | 15 | 3 | >95 | 35 | >95 | 5 | 20 |



THE MAGS PROGRAM

YOU'RE NOT JUST BUYING A BULL

0% FINANCING

PAY 1/3 OF PURCHASE PRICE AT THE SALE.
BALANCE IS DUE OCTOBER 15, 2023.

SPRING YEARLING BULLS

LOT **56**

MAGS KYREE 638K

2/13/2022 | LIM-FLEX(54/49) | MAGS 638K | HOMO BLK (P-3) | HET POLLED (T) | LFM2519028

PAP | 43

Act. BW | 79
Adj. WW | 703
Adj. YW | 1319
Adj. REA | 14.52
Adj. IMF | 4.120
Act. SC | 38.3

PBRS BUNK HOUSE 48B
CELL GUARD HOUSE 9300G ET
MAGS DOMINANT DEVA

MAGS XYLOID
MAGS CARYN ET
MAGS THORA

MAGS YIP
LBAF SHAWNEE 602
MAGS EAGLE
CYWD ZAYLEE 6Z
DHVO DEUCE 132R
BOHI RHONDA 314R
KAJO RESPONDER 120R
HA BLACKCAP 1089

| | CE | BW | WW | YW | MK | CM | SC | DC | YG | CW | RE | MB | \$MI |
|----------|----|----|----|-----|----|----|----|----|-----|----|-----|-----|------|
| GED EPDs | 12 | .9 | 72 | 112 | 16 | 7 | .9 | 13 | .04 | 43 | .42 | .16 | 57 |
| % RANK | 35 | 50 | 45 | 50 | 90 | 35 | 45 | 50 | >95 | 25 | 90 | 55 | 65 |

LOT **57**

MAGS KUMMERSPECK 667K

2/20/2022 | LIM-FLEX(51/46.1) | MAGS 667K | HOMO BLK (P-1) | HOMO PLD (P-1) | LFM2519048

PAP | 39

Act. BW | 75
Adj. WW | 665
Adj. YW | 1137
Adj. REA | 13.36
Adj. IMF | 3.915
Act. SC | 36.0

MAGS APPLESEED
MAGS CABLE
MAGS ZEQUIN

MAGS CABLE COWBOY
MAGS GANJA 503G
MAGS BUTTERFINGERS ET

RITO 6EM3 OF 4L1 EMBLAZON
MAGS WAY TO SHINE
BOHI TOP DOLLAR 7144T
WERNER RITA 118
MAGS YIP
LHT MS THUNDER 36X
MAGS ZODIAC
MAGS THEATRICAL

| | CE | BW | WW | YW | MK | CM | SC | DC | YG | CW | RE | MB | \$MI |
|----------|----|-----|----|-----|----|----|-----|----|-----|----|-----|-----|------|
| GED EPDs | 14 | 1.2 | 86 | 140 | 19 | 8 | 1.2 | 15 | .01 | 41 | .41 | .33 | 68 |
| % RANK | 15 | 60 | 10 | 5 | 70 | 20 | 20 | 25 | 95 | 30 | 90 | 25 | 15 |

LOT **58**

MAGS KOBE BRYANT 675K

2/22/2022 | LIM-FLEX(56/49.4) | MAGS 675K | HOMO BLK (T) | HOMO PLD (P-2) | LFM2519092

PAP | 50

Act. BW | 80
Adj. WW | 731
Adj. YW | 1286
Adj. REA | 14.60
Adj. IMF | 4.165
Act. SC | 38.2

SBLX FIRST CLASS
PBRS ENCORE 7195E ET
EF ZYNGA 356Z

CELL ENVISION 7023E
MAGS HEATHHROW 1646H ET
AUTO DALEJAH 211D ET

DAMERON FIRST CLASS
MAGS MANUELA
TC TOTAL 410
MAGS PRETTY CHRISTINE
AHCC BARN BURNER B907
PBRS ZSA ZSA 246Z
EXAR BLUE CHIP 1877B
AUTO REBECA 292S

| | CE | BW | WW | YW | MK | CM | SC | DC | YG | CW | RE | MB | \$MI |
|----------|-----|-----|----|-----|----|----|-----|----|------|----|-----|-----|------|
| GED EPDs | 6 | 3.2 | 87 | 143 | 18 | 5 | 1.6 | 13 | -.21 | 43 | .88 | .43 | 74 |
| % RANK | >95 | 95 | 10 | 4 | 80 | 75 | 5 | 50 | 40 | 25 | 25 | 10 | 3 |

LOT **59**

MAGS KAIDEN 687K

2/26/2022 | LIM-FLEX(57/50.1) | MAGS 687K | HOMO BLK (T) | HOMO PLD (T) | LFM2519093

PAP | 46

Act. BW | 76
Adj. WW | 626
Adj. YW | 1261
Adj. REA | 12.98
Adj. IMF | 2.735
Act. SC | 36.4

SBLX FIRST CLASS
PBRS ENCORE 7195E ET
EF ZYNGA 356Z

CJSL CREED 5042C
CYWD HEARTTHROB 1H
CYWD FAIRLIGHT 15F

DAMERON FIRST CLASS
MAGS MANUELA
TC TOTAL 410
MAGS PRETTY CHRISTINE
MAGS AVIATOR
CJSL 2090Z
TASF BELIEVE 854B
CYWD AZALEA 29A

| | CE | BW | WW | YW | MK | CM | SC | DC | YG | CW | RE | MB | \$MI |
|----------|----|----|----|-----|----|----|----|----|-----|----|-----|-----|------|
| GED EPDs | 11 | .7 | 64 | 103 | 18 | 8 | .8 | 15 | .02 | 31 | .48 | .46 | 66 |
| % RANK | 50 | 45 | 80 | 70 | 80 | 20 | 60 | 25 | 95 | 65 | 85 | 10 | 25 |

LOT **60**

MAGS KASH 693K

2/27/2022 | LIM-FLEX(50/45.4) | MAGS 693K | HOMO BLK (T) | HOMO PLD (P-1) | LFM2519062

PAP | 37

Act. BW | 75
Adj. WW | 691
Adj. YW | 1187
Adj. REA | 13.60
Adj. IMF | 3.810
Act. SC | 37.9

MAGS APPLESEED
MAGS CABLE
MAGS ZEQUIN

CJSL CREED 5042C
MAGS FRED A 123F
MAGS XANTHAMS

RITO 6EM3 OF 4L1 EMBLAZON
MAGS WAY TO SHINE
BOHI TOP DOLLAR 7144T
WERNER RITA 118
MAGS AVIATOR
CJSL 2090Z
LJC MISSION STATEMENT P27
MAGS PARKER

| | CE | BW | WW | YW | MK | CM | SC | DC | YG | CW | RE | MB | \$MI |
|----------|----|-----|----|-----|----|----|----|----|-----|----|-----|-----|------|
| GED EPDs | 14 | -.3 | 77 | 127 | 22 | 10 | 1 | 13 | .01 | 39 | .62 | .67 | 78 |
| % RANK | 15 | 25 | 30 | 20 | 35 | 3 | 35 | 50 | 95 | 35 | 65 | 1 | 1 |

LOT **61**

MAGS KYBO 704K

3/1/2022 | LIM-FLEX(59/51.9) | MAGS 704K | HOMO BLK (P-2) | HOMO PLD (P-3) | LFM2519095

PAP | 41

Act. BW | 75
Adj. WW | 715
Adj. YW | 1329
Adj. REA | 14.84
Adj. IMF | 3.470
Act. SC | 37.6

AHCC DIGGIN DEEP 903D ET
MAGS GAMMA RAY 906G
MAGS BEARABLE

MAGS FEDERAL RESERVE ET
MAGS HOPEFULLY 505H
MAGS CORA

EBFL YPSILANTI 420Y
LVLS 9066U
RITO 6EM3 OF 4L1 EMBLAZON
AUTO CARMINDA 656S
MAGS CABLE
CJSL 4357B ET
MAGS WINSTON
MAGS WINGI

| | CE | BW | WW | YW | MK | CM | SC | DC | YG | CW | RE | MB | \$MI |
|----------|----|----|----|-----|----|----|-----|----|------|----|----|-----|------|
| GED EPDs | 12 | 0 | 74 | 110 | 21 | 7 | 1.3 | 14 | -.03 | 30 | .4 | .47 | 70 |
| % RANK | 35 | 30 | 40 | 50 | 45 | 35 | 20 | 35 | 90 | 70 | 90 | 10 | 10 |

Can't make it to the sale?



WATCH & BID ON THE INTERNET AT
BID.SUPERIORLIVESTOCK.COM

Register one day prior to the sale.

LOT **62**

MAGS KYLER 711K

3/2/2022 | LIM-FLEX(60/53.9) | MAGS 711K | HOMO BLK (P-3) | HOMO PLD (P-3) | LFM2519574

PAP | 46

Act. BW | 80
Adj. WW | 711
Adj. YW | 1309
Adj. REA | 15.56
Adj. IMF | 3.395
Act. SC | 36.1

MAGS CABLE
LFL ESQUIRE 7084E ET
AUTO BLISS 265Y

MAGS XYLOID
MAGS AILEEN
MAGS SALINA

MAGS APPLESEED
MAGS ZEQUIN
LH U HAUL 135U
WLR UGLY BETTY 432U
DHVO DEUCE 132R
BOHI RHONDA 314R
BR MIDLAND
MAGS LADY ACE

| | CE | BW | WW | YW | MK | CM | SC | DC | YG | CW | RE | MB | \$MI |
|----------|----|-----|----|-----|----|----|----|----|------|----|-----|-----|------|
| GED EPDs | 11 | 2.5 | 78 | 129 | 20 | 6 | .8 | 17 | -.08 | 40 | .63 | .17 | 61 |
| % RANK | 50 | 90 | 25 | 15 | 60 | 55 | 70 | 10 | 80 | 35 | 60 | 55 | 50 |

SPRING YEARLING BULLS

LOT **63**

MAGS KARTER 761K

3/21/2022 | LIM-FLEX(53/46.2) | MAGS 761K | HOMO BLK (P-1) | HOMO PLD (P-1) | LFM2519102

| | | |
|------------------|----------------------------------|-----------------------|
| PAP 38 | AHCC HEMI 0901E ET | S A V RESOURCE1441 |
| Act. BW 70 | MAGS HARD CORE1623H ET | LVLS 9066U |
| Adj. WW 730 | MAGS BRITANI | MAGS Y-AXIS |
| Adj. YW 1188 | | MAGS XANTHOCOMIC |
| Adj. REA 15.24 | MAGS CABLE | MAGS APPELESED |
| Adj. IMF 3.290 | MAGS FLIRTATIOUS 1012F ET | MAGS ZEQUIN |
| Act. SC 39.0 | CJSL 4357B ET | S A V HESSTON 2217 |
| | | AHCC XHIBIT THIS X045 |

| | CE | BW | WW | YW | MK | CM | SC | DC | YG | CW | RE | MB | \$MI |
|----------|----|----|----|-----|----|----|-----|----|------|----|-----|-----|------|
| GED EPDs | 16 | -1 | 66 | 102 | 20 | 9 | 1.3 | 15 | -.02 | 32 | .45 | .62 | 73 |
| % RANK | 4 | 15 | 70 | 70 | 60 | 10 | 20 | 25 | 90 | 60 | 85 | 2 | 5 |

LOT **64**

MAGS KAZZIIII 804K

4/3/2022 | LIM-FLEX(53/46.6) | MAGS 804K | HOMO BLK (T) | HOMO PLD (P-2) | LFM2519122

| | | |
|------------------|------------------------------|-----------------------|
| PAP 37 | AHCC HEMI 0901E ET | S A V RESOURCE1441 |
| Act. BW 75 | MAGS HAWKEYE 1657H ET | LVLS 9066U |
| Adj. WW 806 | MAGS ANDRIANNA | MAGS XYLOID |
| Adj. YW 1329 | | MAGS SALINA |
| Adj. REA 14.40 | MYTTY IN FOCUS | S A F FOCUS OF E R |
| Adj. IMF 3.665 | MAGS TOTALLY GORGEOUS | MYTTY COUNTESS 906 |
| Act. SC 41.9 | MAGS PROM NIGHT | MAGS KAPTAIN AMERICA |
| | | CANE RIDGE POLL ELLIE |

| | CE | BW | WW | YW | MK | CM | SC | DC | YG | CW | RE | MB | \$MI |
|----------|----|----|----|-----|----|----|-----|----|------|----|----|-----|------|
| GED EPDs | 15 | .9 | 74 | 114 | 18 | 8 | 1.3 | 13 | -.16 | 36 | .7 | .33 | 66 |
| % RANK | 10 | 50 | 40 | 45 | 80 | 20 | 20 | 50 | 55 | 45 | 50 | 25 | 25 |

LOT **65**

MAGS KIERAN 806K

4/4/2022 | LIM-FLEX(57/50.3) | MAGS 806K | HOMO BLK (T) | HOMO PLD (T) | LFM2519118

| | | |
|------------------|-------------------------------|-------------------------|
| PAP 42 | AHCC HEMI 0901E ET | S A V RESOURCE1441 |
| Act. BW 80 | MAGS HARD CORE1623H ET | LVLS 9066U |
| Adj. WW 688 | MAGS BRITANI | MAGS Y-AXIS |
| Adj. YW 1276 | | MAGS XANTHOCOMIC |
| Adj. REA 14.82 | JMFA RODEMASTER 294Z | LH RODEMASTER 338R |
| Adj. IMF 3.050 | MAGS DAMASCUS | MBLN WONDERING EYE 076W |
| Act. SC 37.6 | MAGS AFORE SIDE | MAGS WHITCOMB |
| | | MAGS WAYSIDE |

| | CE | BW | WW | YW | MK | CM | SC | DC | YG | CW | RE | MB | \$MI |
|----------|----|-----|----|-----|----|----|----|----|------|----|----|-----|------|
| GED EPDs | 8 | 3.1 | 81 | 135 | 18 | 4 | .9 | 14 | -.22 | 48 | .7 | .06 | 59 |
| % RANK | 90 | 95 | 20 | 10 | 80 | 90 | 60 | 35 | 40 | 15 | 50 | 75 | 60 |

LOT **66**

MAGS 807K

4/5/2022 | LIM-FLEX(65/56.6) | MAGS 807K | HOMO BLK (P-3) | HOMO PLD (P-3) | LFM2519133

| | | |
|------------------|---------------------------------|------------------------|
| PAP 39 | EBFL YPSILANTI 420Y | TC ABERDEEN 759 |
| Act. BW 78 | AHCC DIGGIN DEEP 903D ET | MAGS RAMADA |
| Adj. WW 699 | LVLS 9066U | LVLS FARMER JOHN 7428P |
| Adj. YW 1247 | | LVLS9066R |
| Adj. REA 14.54 | MAGS ZODIAC | MAGS WINSTON |
| Adj. IMF 3.425 | MAGS BRITTLE WILL | MAGS XANTHOUS |
| Act. SC 35.7 | MAGS YES I WILL | LH RODEMASTER 338R |
| | | MAGS TATTLER |

| | CE | BW | WW | YW | MK | CM | SC | DC | YG | CW | RE | MB | \$MI |
|----------|----|----|----|-----|----|----|-----|----|------|----|----|-----|------|
| GED EPDs | 9 | .8 | 75 | 122 | 20 | 6 | 1.3 | 17 | -.13 | 55 | .6 | .08 | 57 |
| % RANK | 80 | 50 | 35 | 25 | 60 | 55 | 20 | 10 | 65 | 5 | 65 | 75 | 70 |

FOUND IN OUR PENS ARE

BULLS OF ALL PRICE RANGES

10-YEAR HISTORICAL
MAGNESS BULL SALE AVERAGES

| PRICE RANGE | % SOLD |
|-----------------|--------|
| >\$10,000 | 4% |
| \$7,500-\$9,999 | 11% |
| \$5,500-\$7,499 | 25% |
| \$4,500-\$5,499 | 24% |
| \$2,750-\$4,499 | 36% |

TAKE ADVANTAGE

0% FINANCING

Pay 1/3 purchase price at the sale. Balance is due October 15, 2023.

VOLUME PURCHASE PROGRAM

Buy in bulk and receive a discount.

Buy 5-9 and receive a 5% discount.

Buy 10 or more bulls and receive a 10% discount.

LIMOUSIN & LIM-FLEX REFERENCE SIRES



The importance of quality herd bulls, be it in a commercial or seedstock operation, cannot be stressed enough. Herd bull decisions made today influence your program, either positively or negatively, for years to come through daughters retained in the herd.

At Magness Land & Cattle we have always believed in having the absolute best bull power available in the industry. As such, we have invested heavily over the years to ensure only the best sires walk behind our progressive AI and embryo program.

As you study the bulls offered for sale in this catalog, and as you look over the reference sire listing on the following pages, you will notice the positive influence bulls owned by Magness Land & Cattle or bulls carrying the MAGS moniker, are currently having on our program.

By becoming a customer of Magness Land & Cattle, you are not simply buying a new herd bull, you are buying into our philosophy of continuously striving to improve the sire side of the breeding equation.

| ANIMAL NAME | SIRE | DAM | CE | BW | WW | YW | MK | CM | SC | DC | YG | CW | RE | MB | \$MI |
|-----------------------------|--------------------------|---------------------------|----|------|----|-----|----|----|------|----|-------|----|-------|-------|------|
| AHCC DAKOTA THUNDER 363D | AHCC ANGUS VALLEY 911B | AHCC MISS ROBIN A363 | 13 | -0.9 | 81 | 133 | 30 | 9 | 0.8 | 18 | -0.04 | 44 | 0.37 | 0.54 | 75 |
| AHCC DIGGIN DEEP 903D ET | EBFL YPSILANTI 420Y | LVLS 9066U | 11 | -0.8 | 59 | 91 | 19 | 9 | 2.2 | 15 | -0.04 | 39 | 0.48 | 0.07 | 51 |
| AHCC EASY RIDER 5594E | ELMW ALFALFA 103B | AHCC MISS Y AXIS C5594 ET | 12 | -0.5 | 90 | 139 | 27 | 9 | 0.7 | 14 | -0.17 | 32 | 0.84 | 0.41 | 74 |
| AHCC HEMI 0901E ET | S A V RESOURCE 1441 | LVLS 9066U | 7 | 3.0 | 92 | 152 | 16 | 3 | 1.8 | 18 | -0.10 | 68 | 0.96 | 0.31 | 70 |
| CELL FREEDOM 8208F ET | MAGS ALI | LLJB ABSOLUTE STYLE 3056A | 9 | 0.6 | 63 | 92 | 25 | 6 | 1.9 | 11 | 0.10 | 25 | -0.02 | 0.21 | 56 |
| CELL GUARD HOUSE 9300G ET | PBRB BUNK HOUSE 48B | MAGS DOMINANT DEVA | 10 | 2.0 | 77 | 121 | 14 | 6 | 1.1 | 12 | -0.01 | 40 | 0.30 | 0.18 | 60 |
| CJSL CREED 5042C | MAGS AVIATOR | CJSL 2090Z | 16 | -1.0 | 67 | 120 | 16 | 11 | -0.4 | 10 | 0.08 | 35 | 0.60 | 0.68 | 75 |
| CJSL DAUNTLESS 6257D ET | MAGS ZODIAC | LLJB ABSOLUTE STYLE 3056A | 12 | -0.3 | 66 | 101 | 21 | 7 | 0.5 | 19 | 0.11 | 26 | 0.07 | 0.32 | 61 |
| DHIL COLT 5793C | PVF INSIGHT 0129 | PBRB TOUCH ME GENTLY 798T | 7 | 3.0 | 91 | 145 | 20 | 4 | 0.7 | 13 | -0.13 | 60 | 0.85 | 0.02 | 59 |
| ELCX KINGS LANDING 599 D ET | MAGS XYLOID | WLR PRADA | 8 | 1.7 | 62 | 92 | 27 | 4 | 0.5 | 13 | -0.28 | 22 | 0.68 | -0.10 | 47 |
| FWLY CAN DO | RLBH AIR FORCE ONE | CLLL CRYSTAL 334W | 11 | 2.1 | 77 | 120 | 15 | 6 | 0.9 | 9 | -0.16 | 50 | 0.91 | 0.14 | 60 |
| HBRL GATEWAY 9511G | EXAR MONUMENTAL 6056B | HBRL COVERIGRL 563C ET | 14 | -1.7 | 85 | 136 | 17 | 9 | 0.5 | 11 | 0.08 | 63 | 0.58 | 0.71 | 81 |
| LFL ESQUIRE 7084E ET | MAGS CABLE | AUTO BLISS 265Y | 12 | 1.2 | 80 | 134 | 18 | 7 | 0.6 | 19 | -0.07 | 44 | 0.64 | 0.51 | 73 |
| MAGS CABLE | MAGS APPLESEED | MAGS ZEQUIN | 15 | 1.3 | 84 | 128 | 26 | 10 | 1.4 | 15 | -0.04 | 40 | 0.54 | 0.57 | 76 |
| MAGS FAULTLESS 154F | TMCK CASH FLOW 247C | MAGS ANDRIA | 8 | 2.6 | 91 | 138 | 26 | 1 | 1.4 | 17 | 0.14 | 59 | 0.56 | 0.65 | 80 |
| MAGS FEDERAL RESERVE ET | MAGS CABLE | CJSL 4357B ET | 14 | 0.1 | 73 | 109 | 23 | 8 | 1.5 | 15 | 0.09 | 25 | 0.12 | 0.74 | 78 |
| MAGS FIRESTONE 218F | MAGS APPLE JACK | MAGS DAYSTAR | 10 | 2.0 | 83 | 132 | 14 | 5 | 0.5 | 4 | -0.18 | 38 | 0.44 | -0.01 | 56 |
| MAGS GAMMA RAY 906G | AHCC DIGGIN DEEP 903D ET | MAGS BEARABLE | 11 | -0.9 | 66 | 98 | 17 | 6 | 1.5 | 12 | -0.14 | 29 | 0.46 | 0.28 | 61 |
| MAGS GOOD WILL 130G | AHCC DAKOTA THUNDER 363D | CYWD ZAYLEE 6Z | 9 | 0.3 | 68 | 101 | 24 | 7 | 1.0 | 15 | -0.12 | 18 | 0.24 | 0.44 | 67 |
| MAGS HARD CORE 1623H ET | AHCC HEMI 0901E ET | MAGS BRITANI | 11 | 2.2 | 83 | 135 | 17 | 6 | 1.6 | 16 | -0.05 | 55 | 0.67 | 0.29 | 66 |
| MAGS HAWKEYE 1657H ET | AHCC HEMI 0901E ET | MAGS ANDRIANNA | 9 | 3.1 | 86 | 145 | 18 | 5 | 1.5 | 14 | -0.11 | 56 | 0.88 | 0.37 | 71 |
| MAGS HUSKER 1665H ET | PBRB BUNK HOUSE 48B | PBRB CLASSEN ET | 7 | 3.1 | 77 | 122 | 16 | 6 | 0.7 | 10 | -0.16 | 36 | 0.60 | 0.41 | 70 |
| MAGS XYLOID | DHVO DEUCE 132R | BOHI RHONDA 314R | 10 | 2.3 | 60 | 93 | 19 | 4 | 0.6 | 17 | -0.05 | 31 | 0.37 | 0.08 | 51 |
| MAGS YIP | MAGS THE GENERAL | AUTO CARMINDA 656S | 10 | 1.0 | 66 | 105 | 11 | 4 | 0.1 | 10 | -0.28 | 40 | 0.64 | 0.10 | 56 |
| MAGS ZODIAC | MAGS WINSTON | MAGS XANTHOS | 12 | 2.0 | 81 | 139 | 18 | 4 | 0.3 | 16 | -0.01 | 62 | 0.52 | 0.15 | 60 |
| PBRB ENCORE 7195E ET | SBLX FIRST CLASS | EF ZYNGA 356Z | 10 | -1.2 | 54 | 93 | 17 | 8 | 1.5 | 12 | -0.02 | 24 | 0.52 | 0.73 | 73 |

MAGNESS LAND & CATTLE EPD AVERAGES COMPARED TO OTHER BREED EPD AVERAGES.

U.S. born non-parents on common base, Spring 2023 NCE

| | CE | BW | WW | YW | MK | CM | SC | DC | YG | CW | RE | MB | \$MI |
|------------------|----|------|----|-----|----|----|-----|----|-------|----|-----|-------|------|
| MAGS SALE BULLS | 11 | 1.0 | 73 | 116 | 20 | 6 | 1.0 | 13 | -0.05 | 38 | .50 | .32 | 64 |
| LIMOUSIN | 11 | 1.0 | 66 | 97 | 22 | 6 | 0.6 | 13 | -0.51 | 26 | 1.1 | -0.14 | 48 |
| LIM-FLEX | 11 | 0.8 | 72 | 111 | 21 | 7 | 0.9 | 13 | -0.19 | 25 | .70 | .19 | 60 |
| RED ANGUS | 13 | -1.9 | 60 | 96 | 25 | 7 | - | - | - | - | - | .49 | - |
| CHIANINA | 8 | 1.9 | 51 | 78 | 14 | 4 | - | - | -0.09 | 26 | .39 | .33 | - |
| SHORTHORN | 9 | 1.7 | 46 | 70 | 22 | 4 | - | - | -0.32 | 5 | .35 | .02 | - |
| MAINE ANJOU | 7 | 0.9 | 45 | 60 | 18 | - | - | - | - | 15 | .31 | .14 | - |
| SIMMENTAL HYBRID | 12 | 0.3 | 76 | 118 | 23 | - | - | 12 | -0.23 | 32 | .67 | .32 | - |
| GELBVIEWH HYBRID | 13 | 0.6 | 71 | 109 | 31 | 7 | .60 | 12 | -0.06 | 35 | .49 | .36 | - |

LIMOUSIN & LIM-FLEX REFERENCE SIRES



MAGS CABLE



MAGS FAULTLESS 154F



MAGS HARD CORE 1623H ET



MAGS FEDERAL RESERVE ET



MAGS FIRESTONE 218F



MAGS YIP



MAGS ZODIAC



MAGS XYLOID



LIMOUSIN TODAY - PROFIT TOMORROW

"We use Lim-Flex® bulls on our British-based cows because it allows us to achieve our goal of producing a high percentage of cattle that grade Choice, have higher yielding carcasses, while maintaining feed efficiency and uniformity."

Erik Roen
Sierra Valley Ranch, California

Limousin and Lim-Flex® (Limousin x Angus hybrid) deliver to your bottom line.

- Calving ease & calf vigor
- More pounds to sell at weaning
- Feed efficiency
- Tested & proven docility
- Cow & bull longevity
- Carcass merit

To find out more about how you can profit tomorrow with Limousin or Lim-Flex® bulls and females, visit www.NALF.org.
North American Limousin Foundation · 303-220-1693 · Limousin@NALF.org · NALF.org

THANK YOU



THANK YOU

WE APPRECIATE YOUR SUPPORT
OVER THE YEARS.

**2023 FRONT RANGE
BULL SALE AVERAGES**

66 TOTAL BULL LOTS GROSS _____ AVG. _____



WEBSITE



**ONLINE
SALES**



**OFFICIAL BREED
PUBLICATION**

Encompassing all that is Limousin



NORTHERN TERRITORY
Sarah Johnson • 614.266.2646 • sarah@Limousin365.com

SOUTHERN TERRITORY
DeRon Heldermon • 405.850.5102 • DeRon@Limousin365.com

[HOME](#) [ASSOCIATION](#) [YOUTH](#) [COMMERCIAL](#) [EVENTS](#) [ONLINE SALES](#) [PROMOTION](#) [CONTACT](#)

405.260.3775 • www.limousin365.com • Like us on



2005 RUHL DRIVE
GUTHRIE, OK 73044



MAGNESS BEEF BULLS

FRONT RANGE
ANNUAL BULL SALE

SATURDAY, APRIL 1, 2023
1 P.M. MDT • PLATTEVILLE, COLORADO

